



**B&R Enclosures**  
**FIELD FC**

[brenclosures.com.au](http://brenclosures.com.au)

# Field FC

## Industrial Field Enclosures



- Suitable for housing ITS equipment, GPS receivers / transmitters, road monitoring / traffic management in infrastructure applications.
- Designed to protect electronic equipment in outdoor and isolated locations.
- Has been specifically designed to minimise vandalism.
- Region D wind rated to AS1170.2-2002: Structural design actions – Wind actions.
- Flush front and rear doors with concealed hinges.
- Sunshield roof to minimise the effects of solar radiation.
- Conformity, Approvals:  
Lloyds Register #06/10007 (E2)
- Manufactured from 2mm thick zinc coated steel, 1.5mm thick 316 stainless steel or 2mm thick aluminium.
- Powdercoated Smoke Blue T33 or N4 surface finish.

Comes standard with:

- Enclosure frame
- Front and rear door
- Sunshield roof
- 3mm aluminium gland plates
- 100mm high plinth – stainless steel
- Eye bolts
- Vertical mounting posts



### ORDERING GUIDE

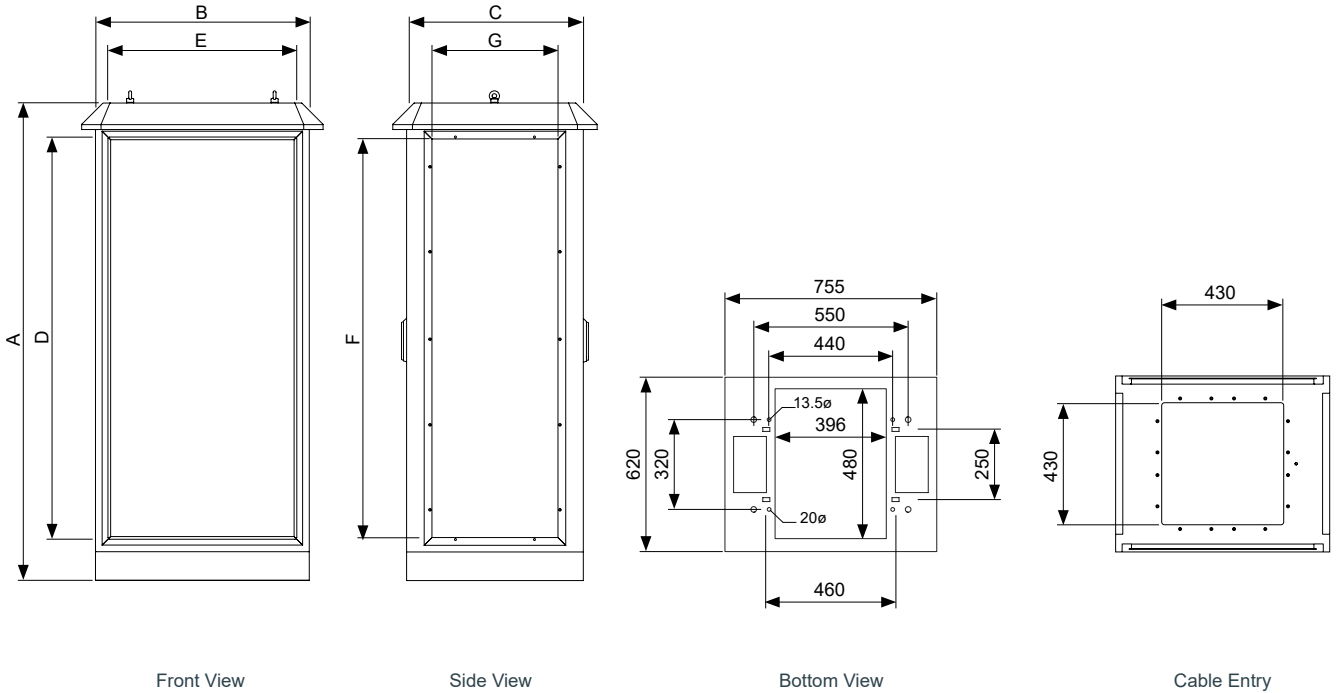
Part Number			Dimensions (mm)						
			External			Front Opening		Side Opening	
Zinc coated steel	316 stainless steel	Aluminium	Height (A)	Width (B)	Depth (C)	Height (D)	Width (E)	Height (F)	Width (G)
FC130706 <sup>▲</sup>	FC130706/S <sup>▲</sup>	FC130706/A <sup>▲</sup>	1375	755	620	1085	640	1095	440
FC160706 <sup>▲</sup>	FC160706/S <sup>▲</sup>	FC160706/A <sup>▲</sup>	1675	755	620	1385	640	1395	440
FC190706 <sup>▲</sup>	FC190706/S <sup>▲</sup>	FC190706/A <sup>▲</sup>	1975	755	620	1685	640	1695	440
FC220706 <sup>▲</sup>	FC220706/S <sup>▲</sup>	FC220706/A <sup>▲</sup>	2275	755	620	1985	640	1995	440

<sup>▲</sup> Available on Request

### ACCESSORIES QUICK SELECTION GUIDE

Accessories	Page No.
Cladding	4
Ventilated shelves	4
Baying Kit	5
Rails & Brackets	5
General Accessories	5

TECHNICAL DRAWINGS



**1** **Select your enclosure size from the ordering guide.**  
The ordering guide is categorised by depth (with subsequent widths and depths shown in the dimension table). The table is incremented from smallest to largest height.

**2** **Select your cladding size.**  
Select from the table (the relevant part numbers are listed for each size enclosure). Please note that side cladding is required to achieve IP66.

**3** **Select other additional components.**  
Choose from the range listed in the selected enclosure column in the ordering guides.

**4** **If additional information is required see catalogue pages** or contact your local B&R sales representative to discuss your requirements.

# Field FC

## Accessories to suit Field Enclosures

### Side Cladding

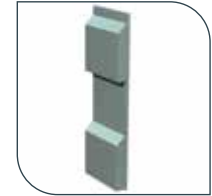
Vented side panels (metalware only). Fan and filters (see page 114 for full range) are required and can be purchased separately.

Part Number*	Description	Material	To suit enclosure (mm)	
			Height	Depth
FCCP1306*	Flush with no ventilation	Zinc coated steel	1375	620
FCCP1606*			1675	620
FCCP1906*			1975	620
FCCP2206*			2275	620
FCCP1306/S*		316 stainless steel	1375	620
FCCP1606/S*			1675	620
FCCP1906/S*			1975	620
FCCP2206/S*			2275	620
FCCP1306/A*		Aluminium	1375	620
FCCP1606/A*			1675	620
FCCP1906/A*			1975	620
FCCP2206/A*			2275	620
FCCP1306V*	Vented with vent hood	Zinc coated steel	1375	620
FCCP1606V*			1675	620
FCCP1906V*			1975	620
FCCP2206V*			2275	620
FCCP1306V/S*		316 stainless steel	1375	620
FCCP1606V/S*			1675	620
FCCP1906V/S*			1975	620
FCCP2206V/S*			2275	620
FCCP1306V/A*		Aluminium	1375	620
FCCP1606V/A*			1675	620
FCCP1906V/A*			1975	620
FCCP2206V/A*			2275	620

\* Includes one side only  
 \* Available on request



Flush with no ventilation



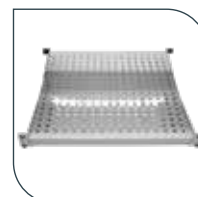
Vented with vent hoods

### Ventilated Shelves

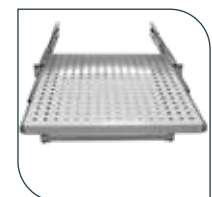
Designed for mounting fixed equipment. Available in various options to suit requirements. Rack rails are required for the standard, heavy-duty and telescopic shelves (purchased separately).

Product	Part Number	Description	RU	Dimensions (mm)	
				Height	Width
Standard	FCSF06/19*	19 inch, rated to 50kg	1	440	480
	FCSF06/21*^	21 inch, rated to 50kg	1	490	480
Heavy duty	FCSH06/19*	19 inch, rated to 160kg	1	440	480
	FCSH06/21*^	21 inch, rated to 160kg	1	490	480
Telescopic	FCST06/19*	19 inch, rated to 20kg	1	440	480
	FCST06/21*^	21 inch, rated to 20kg	1	490	480

\* Rack rail required  
 \* Available on request



FCSF - Standard shelf



FCST - Telescopic shelf

# Field FC

## Accessories to suit Field Enclosures



### Baying Kits

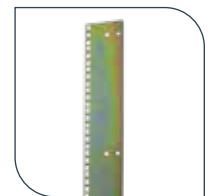
Are a method of joining 19" cabinets together. Side cladding must be removed before baying cabinets together.

Part Number	Material	To suit enclosures (mm)	
		Height	Depth
FCBK1306*	Zinc coated steel	1375	620
FCBK1606*		1675	620
FCBK1906*		1975	620
FCBK2206*		2275	620
FCBK1306/S*	316 stainless steel	1375	620
FCBK1606/S*		1675	620
FCBK1906/S*		1975	620
FCBK2206/S*		2275	620

\*Available on request

### Rails and Brackets

Product	Part Number	Description	Height (mm)	To suit enclosure height (mm)
19" & 21" rail (set of 4)	FCRU15	15RU	670	Partial height rail
	FCRU24	24RU	1081	1375
	FCRU31	31RU	1381	1675
	FCRU37	37RU	1681	1975
	FCRU44	44RU	1981	2275

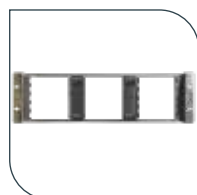


FCRU- 19" / 21" rail

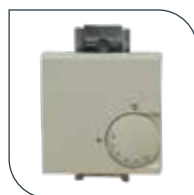
### General Accessories

Product	Part Number	Description	RU
15-way backmount frame	FCCD15/19	19 inch	3
19-pole load centre	FCLC19/19	19 inch	5
Light kit	FCLK	3W LED c/w power supply and switch	1
Door limit switch (alarm)	FCDS	10A, 250V AC	1
Thermostat	FCTHERM	10°C to +60°C	-
Gland Plate	FCGA0706*	3mm aluminium	-
Plan holder	FCPLN07*	A3	-

\*Available on request



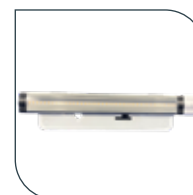
FCCD - Backmount frame



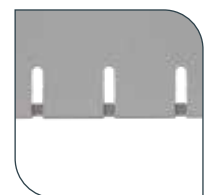
FCTHERM - Thermostat



FCGA0706 - 3mm aluminium gland plate



FCLK - Light kit complete with switch



FCPLN07 - A3 Plan holder

## AUSTRALIA

### Sales

T: 1300 Enclosures (1300 362 567)

E: sales@brenclosures.com.au

brenclosures.com.au

## QUEENSLAND

Brisbane Manufacturing, Sales & Warehouse

51 Stradbroke Street

Heathwood QLD 4110

(PO Box 1151)

Browns Plains BC QLD 4118

T: +61 7 3714 1111

E: salesqld@brenclosures.com.au

## NORTH QUEENSLAND

Townsville Sales & Warehouse

Unit 4/ 780 Ingham Road

Mount Louisa, QLD 4814

(PO Box 7615)

Garbutt QLD 4814

T: +61 7 4727 1900

E: salestvl@brenclosures.com.au

## NEW SOUTH WALES

NSW & ACT Sales & Warehouse

7 Metters Place

Wetherill Park NSW 2164

T: +61 2 9915 9555

E: salesnsw@brenclosures.com.au

## NEWCASTLE Distribution

Ross Joice Agencies Pty Ltd

109-111 Broadmeadow Road

Broadmeadow NSW 2292

T: +61 2 4961 4433

## VICTORIA

VIC & TAS Sales & Warehouse

50-52 Sunmore Close

Heatherston VIC 3202

T: +61 3 9552 0552

E: salesvic@brenclosures.com.au

## TASMANIA Distribution

W P Martin Pty Ltd

85 Elizabeth Street

Launceston TAS 7250

T: +61 3 6331 5545

## SOUTH AUSTRALIA

SA & NT Manufacturing, Sales & Warehouse

505 Grand Junction Road

Wingfield SA 5013

T: +61 8 8417 6222

E: salessa@brenclosures.com.au

## NORTHERN TERRITORY Distribution

Jewell Distributors Pty Ltd

Cnr Hidden Valley & Beaton Roads

Berrimah NT 0828

T: +61 8 8947 0870

## WESTERN AUSTRALIA

WA Sales Office & Warehouse

6 Montgomery Way

Malaga WA 6090

T: +61 8 6310 4777

E: saleswa@brenclosures.com.au

## NEW ZEALAND

### Sales

B&R Enclosures Limited

T: 0800 Enclosures (0800 362 567)

E: sales@brenclosures.co.nz

brenclosures.co.nz

## AUCKLAND Distribution

Matchmaster

Unit 6103 Cryers Road

East Tamaki Auckland NZ 2013

T: +64 9 265 2097

E: sales@brenclosures.co.nz

## CHRISTCHURCH Distribution

Matchmaster

17 Washbournes Road

Wigram Christchurch NZ 8042

T: +64 3 348 0659

E: sales@brenclosures.co.nz