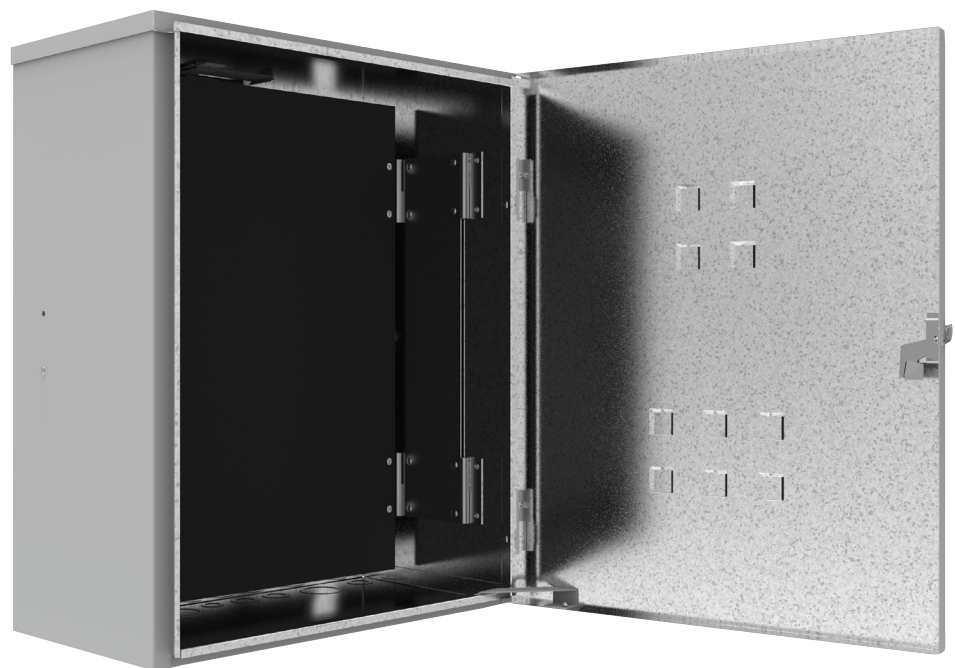


SA Straight Sides Enclosures



Designed for both single and multi-phase installations.

- Suitable for domestic and light commercial installations.
- Standard SA rebate to allow enclosure to be recessed into the wall easily.
- Provision to fit ES coin lock to door of the enclosure.
- Earth wand neutral links.
- Meter neutral links.
- Manufactured from 1.0mm thick galvanised steel to Z275.
- Powdercoated Light Grey RAL7035.



1FPS