



**B&R Enclosures**  
**MONARCH IP - Aluminium**

[brenclosures.com.au](http://brenclosures.com.au)

# Monarch IP – Aluminium

Industrial Enclosures and Switchboard Building Systems



- Suitable for small motor control applications, lighting, CT metering and smaller switchboard applications.
- Premium enclosure and switchboard building system designed to be the ultimate in flexibility.
- Region D wind rated to AS1170.2-2002: Structural design actions – Wind actions.
- Conformity, Approvals:
  - Lloyds Register #06/10007 (E2)
- Manufactured from 2.5mm aluminium.
- Powdercoated Light Grey RAL7035 or X15 Orange.

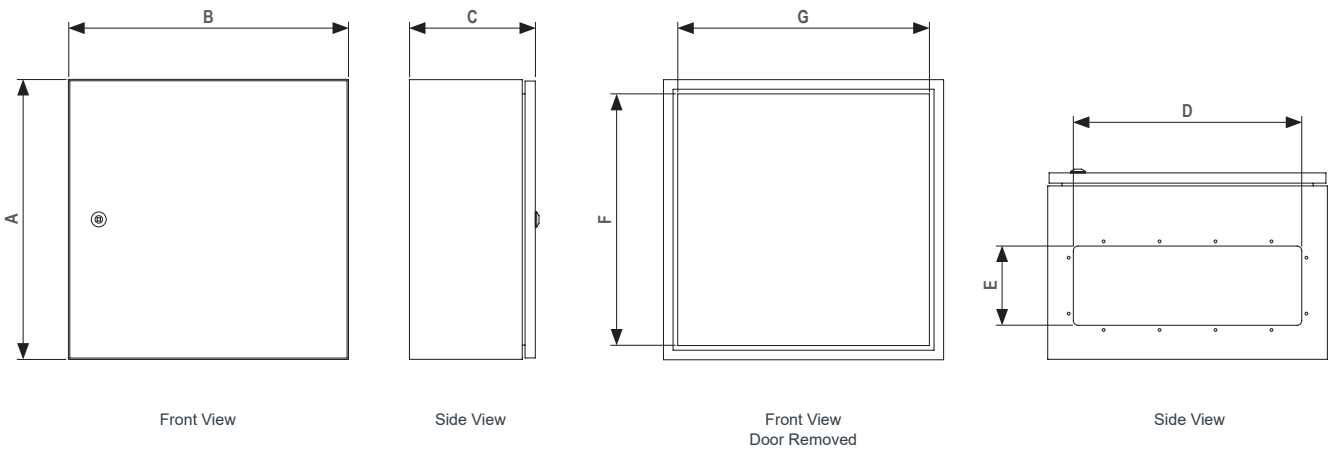
Comes standard with:

- 'C' rail mountings (4 rails on heights up to 800mm and 8 rails on 1200mm and above)
- Gland plate (fitted internally or externally)
- 7mm square turnbuckle lock (IP020/PS) on units below 1600mm high and lockable L handles (IP050) on others
- 3-point locking on units of 600mm high and higher
- Removable back on units 400mm deep and deeper
- Rear panel is internally secured
- Door rails and earth strap kit



## TECHNICAL DRAWINGS

**i** See **Page 15** for a range of lock options available for the Monarch IP range.



## ACCESSORIES QUICK SELECTION

Accessories	Page No.	Accessories	Page No.	Accessories	Page No.
Rainhoods	4	Escutcheon Rails	8	Standard Rails – C Section	12
Gland Plates	4	Fixed Escutcheons	9	Universal Rails	12
Plinths	5	Mounting Brackets	9	19" Mounting Rails	12
Vent Kits	5	Universal Rail Kits	10	Laptop Lecterns	12
Vent Hoods	6	Door Stays	10	Document Holders	13
Mounting Pans	6-7	Eye Bolts	10	Schedule Holders	13
Insulating Panels	7	Shelves	11	Backmount Frame / Load Centre	13
Hinged Escutcheons	8	DIN Rails	11	General Accessories	14



## ORDERING GUIDE

		Dimensions (mm)								
		External			Gland Opening		Opening			
Part Number	Part Number	Height (A)	Width (B)	Depth (C)	Width (D)	Depth (E)	Height (F)	Width (G)	Material Thickness (mm)	Weight (kg)
IP13132/A	IP13132/ARO	407	407	272	250	120	341	341	1.2	6.5
IP21132/A	IP21132/ARO	607	407	272	250	120	541	341	1.2	8.5
IP13212/A	IP13212/ARO	407	607	272	440	120	341	541	1.5	8.5
IP21212/A	IP21212/ARO	607	607	272	440	120	541	541	1.5	11.0
IP29212/A	IP29212/ARO	807	607	272	440	120	741	541	1.5	13.0
IP37212/A	IP37212/ARO	1007	607	272	440	120	941	541	1.5	15.5
IP45212/A	IP45212/ARO	1207	607	272	440	120	1141	541	1.5	18.0
IP21292/A	IP21292/ARO	607	807	272	440	120	541	741	1.5	13.0
IP13214/A	IP13214/ARO	407	607	402	490	170	341	541	1.5	11.0
IP21214/A	IP21214/ARO	607	607	402	490	170	541	541	1.5	15.0
IP29214/A	IP29214/ARO	807	607	402	490	170	941	541	1.5	18.0
IP45214/A	IP45214/ARO	1207	607	402	490	170	1141	541	1.5	24.0
IP61214/A	IP61214/ARO	1607	607	402	490	170	1541	541	1.5	30.0
IP69214/A	IP69214/ARO	1807	607	402	490	170	1741	541	1.5	34.0
IP77214/A	IP77214/ARO	2007	607	402	490	170	1941	541	1.5	37.0
IP25254/A	IP25254/ARO	707	707	402	490	170	641	641	1.5	18.0
IP37254/A	IP37254/ARO	1007	707	402	490	170	941	641	1.5	22.0
IP21294/A	IP21294/ARO	607	807	402	490	170	541	741	1.5	18.0
IP29294/A	IP29294/ARO	807	807	402	490	170	741	741	1.5	21.0
IP37294/A	IP37294/ARO	1007	807	402	490	170	941	741	1.5	25.0
IP45294/A	IP45294/ARO	1207	807	402	490	170	1141	741	1.5	29.0
IP61294/A	IP61294/ARO	1607	807	402	490	170	1541	741	1.5	37.0
IP69294/A	IP69294/ARO	1807	807	402	490	170	1741	741	1.5	40.0
IP77294/A	IP77294/ARO	2007	807	402	490	170	1941	741	1.5	44.0
IP77135/A	IP77135/ARO	2007	407	502	250	170	1941	341	1.5	21.0
IP29215/A	IP29215/ARO	807	607	502	490	170	741	541	1.5	27.0
IP45215/A	IP45215/ARO	1207	607	502	490	170	1141	541	1.5	34.0
IP61215/A	IP61215/ARO	1607	607	502	490	170	1541	541	1.5	37.0
IP69215/A	IP69215/ARO	1807	607	502	490	170	1741	541	1.5	41.0
IP77215/A	IP77215/ARO	2007	607	502	490	170	1941	541	1.5	42.7
IP21295/A	IP21295/ARO	607	807	502	490	170	541	741	1.5	21.0
IP45295/A	IP45295/ARO	1207	807	502	490	170	1141	741	1.5	32.0
IP61295/A	IP61295/ARO	1607	807	502	490	170	1541	741	1.5	40.0
IP69295/A	IP69295/ARO	1807	807	502	490	170	1741	741	1.5	44.0
IP77295/A	IP77295/ARO	2007	807	502	490	170	1941	741	1.5	48.0
IP77136/A	IP77136/ARO	2007	407	602	250	170	1941	341	1.5	43.8
IP29216/A	IP29216/ARO	807	607	602	490	170	741	541	1.5	27.0
IP45216/A	IP45216/ARO	1207	607	602	490	170	1141	541	1.5	36.0
IP61216/A	IP61216/ARO	1607	607	602	490	170	1541	541	1.5	40.0
IP77216/A	IP77216/ARO	2007	607	602	490	170	1941	541	1.5	45.0
IP61296/A	—	1607	807	602	490	170	1541	741	1.5	43.0
IP77296/A	IP77296/ARO	2007	807	602	490	170	1941	741	1.5	53.0
IP77218/A	IP77218/ARO	2007	607	802	490	170	1941	541	1.5	59.8
IP77298/A	IP77298/ARO	2007	807	802	490	170	1941	741	1.5	68.3



Door stays (pg10) can only be fitted to cabinets with a width of 600mm or wider.

# Monarch IP

## Accessories to suit all Monarch IP enclosures

### Rainhoods

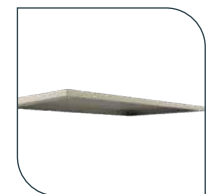
Rainhoods are designed to shed water from the top of the enclosure to prevent it from pooling on top of the enclosure. The rainhoods have an overhang of 14mm.

Part Number	Material	Dimensions (mm)			Slope Angle (Degrees)	To suit enclosures (mm)		
		Height	Width	Depth		Width	Depth	
IPRH132 <sup>▲</sup>	Zinc coated steel	30	400	284	2.0	400	270	
IPRH211 <sup>▲</sup>		30	600	189	3.0	600	175	
IPRH212		30	600	284	2.0	600	270	
IPRH214		30	600	414	1.5	600	400	
IPRH215 <sup>▲</sup>		30	600	514	1.0	600	500	
IPRH216 <sup>▲</sup>		30	600	614	1.0	600	600	
IPRH254		30	700	414	1.5	700	400	
IPRH292 <sup>▲</sup>		30	800	284	2.0	800	270	
IPRH294		30	800	414	1.5	800	400	
IPRH295		30	800	514	1.0	800	500	
IPRH296 <sup>▲</sup>		30	800	614	1.0	800	600	
IPRH051/S <sup>▲</sup>		316 stainless steel	30	200	189	3.0	200	175
IPRH091/S <sup>▲</sup>			30	300	189	3.0	300	175
IPRH132/S			30	400	284	2.0	400	270
IPRH211/S <sup>▲</sup>			30	600	189	3.0	600	175
IPRH212/S	30		600	284	2.0	600	270	
IPRH214/S	30		600	414	1.5	600	400	
IPRH215/S <sup>▲</sup>	30		600	514	1.0	600	500	
IPRH216/S	30		600	614	1.0	600	600	
IPRH254/S <sup>▲</sup>	30		700	414	1.5	700	400	
IPRH292/S <sup>▲</sup>	30		800	284	2.0	800	270	
IPRH294/S	30		800	414	1.5	800	400	
IPRH295/S	30		800	514	1.0	800	500	
IPRH296/S <sup>▲</sup>	30		800	614	1.0	800	600	

<sup>▲</sup> Available on request



Zinc coated steel rainhood on cabinet



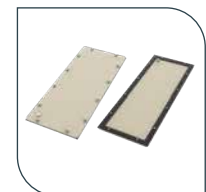
Zinc coated steel rainhood

### Gland Plates

Designed for efficient and flexible fitting and installation of cable glands.

Part Number	Material	Dimensions (mm)			To suit enclosure (mm)	
		Width	Depth	Thickness	Width	Depth
IPGP31 <sup>▲</sup>	Zinc coated steel	290	160	1.6	400	270
IPGP41 <sup>▲</sup>		480	160	1.6	600 or 800	270
IPGP52 <sup>▲</sup>		530	210	1.6	600, 700 or 800	400, 500 or 600
IPGS31	316 stainless steel	290	160	1.5	400	270
IPGS41		480	160	1.5	600 or 800	270
IPGS52		530	210	1.5	600, 700 or 800	400, 500 or 600
IPGB31	Brass	290	160	6	400	270
IPGB41		480	160	6	600 or 800	270
IPGB52		530	210	6	600, 700 or 800	400, 500 or 600
IPGA31	Aluminium	290	160	2.5	400	270
IPGA41		480	160	2.5	600 or 800	270
IPGA52		530	210	2.5	600, 700 or 800	400, 500 or 600

<sup>▲</sup> Available on request



IPGP

# Monarch IP

Accessories to suit all Monarch IP enclosures



## Plinths

Designed for use when mounting enclosures on the floor.

Product	Material	Part Number	Dimensions (mm)			To suit enclosures (mm)	
			Height	Width	Depth	Width	Depth
Access plinths	Steel	IPPH214	200	600	374	600	400
		IPPH215 <sup>▲</sup>	200	600	474	600	500
		IPPH216 <sup>▲</sup>	200	600	574	600	600
		IPPH294	200	800	374	800	400
		IPPH295	200	800	474	800	500
		IPPH296 <sup>▲</sup>	200	800	574	800	600
		IPPH295/3 <sup>▲</sup>	300	800	470	800	500
	316 stainless steel	IPPH214/S	200	600	374	600	400
		IPPH215/S <sup>▲</sup>	200	600	474	600	500
		IPPH216/S <sup>▲</sup>	200	600	574	600	600
		IPPH294/S	200	800	374	800	400
		IPPH295/S	200	800	474	800	500
		IPPH296/S <sup>▲</sup>	200	800	574	800	600
		Plinth	Channel iron	IPPC212	75	600	241
IPPC214	75			600	371	600	400
IPPC215	75			600	471	600	500
IPPC216	75			600	571	600	600
IPPC254	75			700	371	700	400
IPPC294	75			800	371	800	400
IPPC295	75			800	471	800	500
IPPC296 <sup>▲</sup>	75			800	571	800	600
IPPC424	75			1200	371	1200	400
IPPC425 <sup>▲</sup>	75			1200	471	1200	500
IPPC504	75			1400	371	1400	400
IPPC505 <sup>▲</sup>	75			1400	471	1400	500
IPPC584	75			1600	371	1600	400
IPPC585	75			1600	471	1600	500
Clamp bracket	Set of 4 (for use with channel iron plinth)	IPPCB	–	–	–	all	all
Gasket	Neoprene (4m length)	IPPC/G	3	20	–	all	all



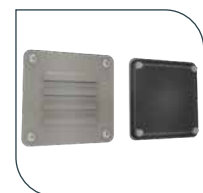
IPPC

<sup>▲</sup> Available on request

## Vent Kits – IP23

Ensure that the enclosure does not become excessively hot by allowing natural circulation of air. The vent kit includes a gasket, insert filter and fittings. Note that by the nature of this item, the enclosure will then not be rated to IP66.

Part Number	Material	Description	Dimensions (mm)		
			Height	Width	To suit cutout (mm)
IPVK	Zinc coated steel	Powdercoated RAL7032	130	130	80 x 80
IPVK/LG		Powdercoated RAL7035	130	130	80 x 80
IPVK/RO		Powdercoated X15 Orange	130	130	80 x 80
IPVK16		Powdercoated RAL7032	260	260	190 x 190
IPVK16/LG <sup>▲</sup>		Powdercoated RAL7035	260	260	190 x 190
IPVK16/RO <sup>▲</sup>		Powdercoated X15 Orange	260	260	190 x 190
IPVK/S	316 stainless steel	–	130	130	80 x 80
IPVK/SRO <sup>▲</sup>		Powdercoated X15 Orange	130	130	80 x 80
IPVK16/S <sup>▲</sup>		–	260	260	190 x 190
IPVK16/SRO <sup>▲</sup>		Powdercoated X15 Orange	260	260	190 x 190
IPVK/A	Aluminium	–	130	130	80 x 80
IPVK16/A <sup>▲</sup>		Powdercoated RAL7035	260	260	190 x 190



IPVK

<sup>▲</sup> Available on request

# Monarch IP

## Accessories to suit all Monarch IP enclosures

### Vent Hoods

Designed to suit B&R's range of fans, filters and vent kits (on selected sizes) to ensure that the fan is protected mechanically and to protect from water and dust ingress.

Part Number	Material	Colour	Dimensions (mm)			To suit
			Height	Width	Depth	
IPVH12	Zinc coated steel	Pebble Grey RAL7032	300	200	50	FAN/FIL12 & IPVK
IPVH12/LG <sup>▲</sup>		Light Grey RAL7035	300	200	50	FAN/FIL12 & IPVK
IPVH12/RO		X15 Orange	300	200	50	FAN/FIL12 & IPVK
IPVH25		Pebble Grey RAL7032	400	300	50	FAN23/28 & FAN/FIL25
IPVH25/LG <sup>▲</sup>		Light Grey RAL7035	400	300	50	FAN23/28 & FAN/FIL25
IPVH25/RO		X15 Orange	400	300	50	FAN23/28 & FAN/FIL25
IPVH35		Pebble Grey RAL7032	475	375	75	FAN/FIL35
IPVH35/LG <sup>▲</sup>		Light Grey RAL7035	475	375	75	FAN/FIL35
IPVH35/RO <sup>▲</sup>		X15 Orange	475	375	75	FAN/FIL35
IPVH12/S	316 stainless steel	N4 finish	300	200	50	FAN/FIL12 & IPVK/S
IPVH12/SRO <sup>▲</sup>		X15 Orange	300	200	50	FAN/FIL12 & IPVK/S
IPVH25/S		N4 finish	400	300	50	FAN23/28 & FAN/FIL25
IPVH25/SRO		X15 Orange	400	300	50	FAN23/28 & FAN/FIL25
IPVH35/S		N4 finish	475	375	75	FAN/FIL35
IPVH35/SRO <sup>▲</sup>	X15 Orange	475	375	75	FAN/FIL35	
IPVH12/A <sup>▲</sup>	Aluminium	Light Grey RAL7035	300	200	50	FAN/FIL12 & IPVK
IPVH25/A <sup>▲</sup>			400	300	50	FAN23/28 & FAN/FIL25
IPVH35/A <sup>▲</sup>			475	375	75	FAN/FIL35

<sup>▲</sup> Available on request



IPVH on cabinet

### Metal Mounting Pans

Very simple to install using the rails supplied as part of the Monarch IP enclosure. They are manufactured from 2mm thick pre-treated mild steel with a gloss white powdercoat finish.

Part Number	Dimensions (mm)			To suit enclosure (mm)	
	Height	Width	Thickness	Height	Width
IPMP0905	250	150	2	300	200
IPMP1309	350	250	2	400	300
IPMP1313	320	340	2	400	400
IPMP1321	320	540	2	400	600
IPMP2113	520	340	2	600	400
IPMP2121	520	540	2	600	600
IPMP2129	520	740	2	600	800
IPMP2525	620	640	2	700	700
IPMP2921 <sup>#</sup>	720	540	2	800	600
IPMP2929 <sup>#</sup>	720	740	2	800	800
IPMP3721 <sup>#</sup>	920	540	2	1000	600
IPMP3725 <sup>#</sup>	920	640	2	1000	700
IPMP3729 <sup>#</sup>	920	740	2	1000	800
IPMP4521 <sup>#</sup>	1120	540	2	1200	600
IPMP4529 <sup>#</sup>	1120	740	2	1200	800
IPMP5321 <sup>▲</sup>	1320	540	2	1400	600
IPMP5329 <sup>▲</sup>	1320	740	2	1400	800
IPMP6121 <sup>*</sup>	1520	540	2	1600	600
IPMP6129 <sup>*</sup>	1520	740	2	1600	800
IPMP6921 <sup>*</sup>	1720	540	2	1800	600
IPMP6929 <sup>*</sup>	1720	740	2	1800	800
IPMP7721 <sup>*</sup>	1920	540	2	2000	600
IPMP7729 <sup>*</sup>	1920	740	2	2000	800

\* Mounting pan features double return on sides and single return on top for extra rigidity.

# Mounting pan features single return on sides.

<sup>▲</sup> Available on request.



IPMP in cab

# Monarch IP

Accessories to suit all Monarch IP enclosures

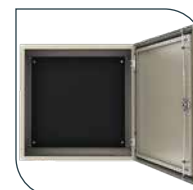


## Insulated Mounting Pans

Suitable where use of a metallic pan is not acceptable. Manufactured from black laminated phenolic material and supplied with all fixings, the insulated mounting pan is easy to install and use.

Part Number	Dimensions (mm)			To suit enclosure (mm)	
	Height	Width	Thickness	Height	Width
IPFP0905 <sup>▲</sup>	250	150	6	300	200
IPFP1309 <sup>▲</sup>	350	250	6	400	300
IPFP1313	320	340	6	400	400
IPFP1321 <sup>▲</sup>	320	540	6	400	600
IPFP2113 <sup>▲</sup>	520	340	6	600	400
IPFP2121	520	540	6	600	600
IPFP2129 <sup>▲</sup>	520	740	6	600	800
IPFP2525 <sup>▲</sup>	620	640	6	700	700
IPFP2921	720	540	6	800	600
IPFP2929 <sup>▲</sup>	720	740	6	800	800
IPFP3721 <sup>▲</sup>	920	540	6	1000	600
IPFP3725 <sup>▲</sup>	920	640	8	1000	700
IPFP3729 <sup>▲</sup>	920	740	8	1000	800
IPFP4521 <sup>▲</sup>	1120	540	8	1200	600
IPFP4529 <sup>▲</sup>	1120	740	8	1200	800

<sup>▲</sup> Available on request



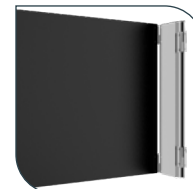
IPFP

## Double Hinged Insulating Panels

Mainly used for metering applications. They are functional mounting solution for equipment installation that provides full access to the rear of the panel.

Part Number	Dimensions (mm)			To suit enclosure (mm)	
	Height	Width	Thickness	Height	Width
IPHP1313	320	325	6	400	400
IPHP1321	320	525	6	400	600
IPHP2113	520	325	6	600	400
IPHP2121	520	525	6	600	600
IPHP2129	520	725	6	600	800
IPHP2421	595	525	6	partial height	600
IPHP2429	595	725	6	partial height	800
IPHP2525	620	625	6	700	700
IPHP2921	720	525	6	800	600
IPHP2929	720	725	6	800	800
IPHP3221 <sup>▲</sup>	795	525	6	partial height	600
IPHP3229	795	725	6	partial height	800
IPHP3721	920	525	6	1000	600
IPHP3725 <sup>▲</sup>	920	625	8	1000	700
IPHP3729	920	725	8	1000	800
IPHP4521	1120	525	8	1200	600
IPHP4529	1120	725	8	1200	800

<sup>▲</sup> Available on request



IPHP

# Monarch IP

## Accessories to suit all Monarch IP enclosures

### Hinged Escutcheons

Used for covering internal controls and accessories. They can be mounted singularly or with two or more fitted into the enclosure. Fitting requires universal rail kit (see page 92).

Part Number	Dimensions (mm)			Required (rail kit)	To suit enclosures (mm)	
	Height	Width	Depth		Height	Width
IPHE1313	324	319	18	IPRK1313	400	400
IPHE1321	319	524	18	IPRK1321	400	600
IPHE2113	524	319	18	IPRK2113	600	400
IPHE2121	524	519	18	IPRK2121	600	600
IPHE2129	524	719	18	IPRK2129	600	800
IPHE2421	599	519	18	–	partial	600
IPHE2429	599	719	18	–	partial	800
IPHE2525	624	619	18	IPRK2525	700	700
IPHE2921	724	519	18	IPRK2921	800	600
IPHE2929	724	719	18	IPRK2929	800	800
IPHE3221	799	519	18	–	partial	600
IPHE3229	799	719	18	–	partial	800
IPHE3721	924	519	18	IPRK3721	1000	600
IPHE3725	924	619	18	IPRK3725	1000	700
IPHE3729	924	719	18	IPRK3729	1000	800
IPHE4521	1124	519	18	IPRK4521	1200	600
IPHE4529	1124	719	18	IPRK4529	1200	800
IPHE6121	1524	519	18	IPRK6121	1600	600
IPHE6129	1524	719	18	IPRK6129	1600	800
IPHE6921	1724	519	18	IPRK6921	1800	600
IPHE6929	1724	719	18	IPRK6929	1800	800
IPHE7721	1924	519	18	IPRK7721	2000	600
IPHE7729	1924	719	18	IPRK7729	2000	800



IPHE



Full height hinged escutcheons are incompatible with door stays

### Escutcheon Rails

Used where two escutcheons meet in the enclosures.

Part Number	Description	Height (mm)
IPEJ <sup>▲</sup>	Pack of 10	joining bracket
IPER05	–	525
IPER07	–	725
IPER19	–	1975

<sup>▲</sup> Available on request



IPER



# Monarch IP

Accessories to suit all Monarch IP enclosures



## Fixed Esutcheons

Used for covering internal controls and accessories. They form a second tier mounting arrangement, in front of the mounting pan. They can be mounted singularly or with two or more fitted into the enclosure. Fitting requires universal rail kit (see page 92).

Part Number	Dimensions (mm)			Required (rail kit)	To suit enclosures (mm)	
	Height	Width	Depth		Height	Width
IPFE1308 <sup>▲</sup>	324	199	18	–	–	–
IPFE1313	324	324	18	IPRK1313	400	400
IPFE1316 <sup>▲</sup>	324	399	18	–	–	–
IPFE1321	324	524	18	IPRK1321	400	600
IPFE1329	324	724	18	–	400	800
IPFE1616 <sup>▲</sup>	399	399	18	–	–	–
IPFE2108	524	199	18	–	600	–
IPFE2113	524	324	18	IPRK2113	600	400
IPFE2116	524	399	18	–	600	–
IPFE2121	524	524	18	IPRK2121	600	600
IPFE2129	524	724	18	IPRK2129	600	800
IPFE2408	599	199	18	–	–	–
IPFE2413	599	324	18	–	–	–
IPFE2416	599	399	18	–	–	–
IPFE2421	599	524	18	–	–	–
IPFE2429	599	724	18	–	–	–
IPFE2525 <sup>▲</sup>	624	624	18	IPRK2525	700	700
IPFE2908	724	199	18	–	800	–
IPFE2916	724	399	18	–	800	–
IPFE2921	724	524	18	IPRK2921	800	600
IPFE2929	724	724	18	IPRK2929	800	800
IPFE3208	799	199	18	–	–	–
IPFE3213	799	324	18	–	–	–
IPFE3216	799	399	18	–	–	–
IPFE3221	799	524	18	–	–	–
IPFE3229	799	724	18	–	–	–
IPFE3708	924	199	18	–	–	–
IPFE3713	924	324	18	–	–	–
IPFE3716	924	399	18	–	–	–
IPFE3721	924	524	18	IPRK3721	1000	600
IPFE3725 <sup>▲</sup>	924	624	18	IPRK3725	1000	700
IPFE3729	924	724	18	IPRK3729	1000	800
IPFE4508	1124	199	18	–	–	–
IPFE4513 <sup>▲</sup>	1124	324	18	–	1200	400
IPFE4516 <sup>▲</sup>	1124	399	18	–	–	–
IPFE4521	1124	524	18	IPRK4521	1200	600
IPFE4529	1124	724	18	IPRK4529	1200	800

<sup>▲</sup> Available on request

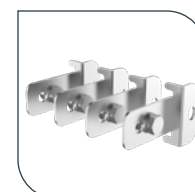


IPFE

## Mounting Brackets

For ease of installation and fixing to the mounting surface. Mounting brackets ensure optimum installation and safety.

Part Number	Material	Quantity	To suit enclosure width (mm)
MEB/S	Stainless steel	4	all
IPWM	Zinc coated steel	4	all
IPWM/A	Aluminium	4	all
IPWM/S	Stainless steel	4	all



MEB/S

# Monarch IP

## Accessories to suit all Monarch IP enclosures

### Universal Rail Kits

Used to install both fixed and hinged escutcheons and complete with 4 rails and fixings. A pair of height rails and a pair of width rails are provided in each kit.

Part Number	Rail lengths (mm)		To suit enclosures (mm)	
	Rail Height	Rail Width	Height	Width
IPRK1313	375	325	400	400
IPRK1321	375	525	400	600
IPRK1329	375	725	400	800
IPRK2113	575	325	600	400
IPRK2121	575	525	600	600
IPRK2129	575	725	600	800
IPRK2525 <sup>▲</sup>	675	625	700	700
IPRK2921	775	525	800	600
IPRK2929	775	725	800	800
IPRK3721	975	525	1000	600
IPRK3725	975	625	1000	700
IPRK3729	975	725	1000	800
IPRK4521	1175	525	1200	600
IPRK4529	1175	725	1200	800
IPRK6121	1575	525	1600	600
IPRK6129	1575	725	1600	800
IPRK6921	1775	525	1800	600
IPRK6929	1775	725	1800	800
IPRK7721	1975	525	2000	600
IPRK7729	1975	725	2000	800

<sup>▲</sup> Available on request



IPRK

### Door Stays

Ensures door remains open even in windy weather ensuring the safety of people working on the installed equipment.

Part Number	Quantity	To suit enclosure width (mm)
IPDS	1	All enclosures 600mm and wider



IPDS



Full height hinged escutcheons are incompatible with door stays

### Eye Bolts

Ensures enclosure is not damaged when lifted and can be moved safely. Compliant to AS4991: Lifting Devices.

Part Number	Quantity	Lift Rating	To suit enclosure width (mm)
LEB/12	2	125kg per bolt	all



LEB/12

# Monarch IP

Accessories to suit all Monarch IP enclosures

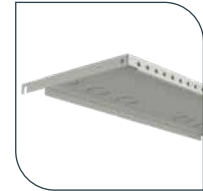


## Shelves

White powdercoated shelving comes complete with knockout for cabling and all fittings. Designed for use as segregation panels for switchboard applications mounting fixed equipment.

Part Number	Dimensions (mm)		To suit enclosures (mm)	
	Width	Depth	Width	Depth
IPSH211 <sup>▲</sup>	563	105	600	175
IPSH212	563	160	600	270
IPSH214	563	280	600	400
IPSH215	563	380	600	500
IPSH216	563	480	600	600
IPSH254 <sup>▲</sup>	663	280	700	400
IPSH292 <sup>▲</sup>	763	160	800	270
IPSH294	763	280	800	400
IPSH295	763	380	800	500
IPSH296	763	480	800	600

**STATIC  
UDL  
200kg**



IPSH



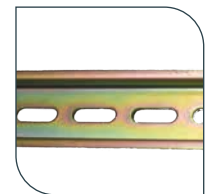
These shelves are NOT designed for load during transport.

<sup>▲</sup> Available on request

## DIN Rails

Used for mounting DIN switchgear and accessories into the enclosure. It is available for all models in aluminium, steel and slotted designs.

Part Number	Material	Description	Dimensions (mm)	
			Length	Depth
IPDN03			360	15
IPDN05 <sup>▲</sup>	Aluminium	–	560	15
IPDN07 <sup>▲</sup>			760	15
DIN35/7.5	Steel	–	2000	7.5
DIN35/7.5SL	Steel slotted	–	2000	7.5
DIN35/15AL15	Aluminium	–	1500	15
DINSB	–	Mounting kit, angle support brackets	–	–



DIN35/7.5SL

<sup>▲</sup> Available on request

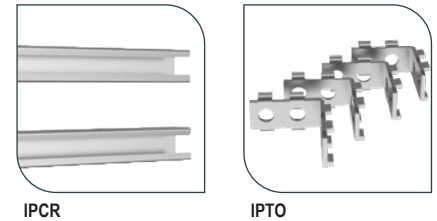
# Monarch IP

Accessories to suit all Monarch IP enclosures

## Standard Rails – C Section

Used to fit additional accessories and rails in the enclosure.

Part Number	Description	Height (mm)	To suit enclosure depth (mm)
IPCR01 <sup>▲</sup>		137	–
IPCR02		232	270
IPCR03		360	400
IPCR04		460	500
IPCR05		560	600
IPCR07		760	800
IPCR12	For loose supply (customer cut to length)	1200	–
IPTO	Takeoff bracket (pack of 10)	–	–



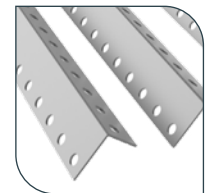
<sup>▲</sup> Available on request

## Universal Rails

Designed for mounting equipment inside an enclosure. Either fixed lengths or can be cut to size requirements.

Part Number	Description	Length (mm)	To suit enclosure height (mm)
IUV	25 pitch	1975	all
UV1 <sup>▲</sup>	20 pitch	1984	all

<sup>▲</sup> Available on request



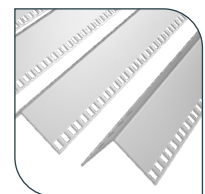
IUV

## 19" Mounting Rails

Designed for mounting equipment inside an enclosure. Either fixed lengths or can be cut to size requirements.

Part Number	Dimensions (mm)			To suit enclosures (mm)	
	Height	Width	Depth	Height	Width
UV19	1946	58.5	76	–	–
IPRU11	536	–	–	600	–
IPRU15	758	–	–	800	–
IPRU24	1158	–	–	1200	600
IPRU32 <sup>▲</sup>	1469	–	–	1600	–
IPRU38 <sup>▲</sup>	1736	–	–	1800	–
IPRU42 <sup>▲</sup>	1958	–	–	2000	–
IPRU11/800 <sup>▲</sup>	536	–	–	600	–
IPRU15/800 <sup>▲</sup>	758	–	–	800	–
IPRU24/800 <sup>▲</sup>	1158	–	–	1200	800
IPRU32/800 <sup>▲</sup>	1469	–	–	1600	–
IPRU38/800 <sup>▲</sup>	1736	–	–	1800	–
IPRU42/800 <sup>▲</sup>	1958	–	–	2000	–

<sup>▲</sup> Available on request



IPRU

## Laptop Lecterns

Designed to allow fast and easy access when using a laptop computer. The laptop lectern protrudes 45mm inside the door. Mounting requires door rails (purchased separately).

Part Number	Description	Dimensions (mm)		To suit door (mm)	
		Width	Depth	Height	Width
IPLL <sup>▲</sup>	Laptop lectern	440	300	600 & above	600 & above
IPRD6 <sup>▲</sup>	Door rails (set of 2)	–	–	–	600
IPRD8 <sup>▲</sup>		–	–	–	800

<sup>▲</sup> Available on request



IPLL

# Monarch IP

Accessories to suit all Monarch IP enclosures

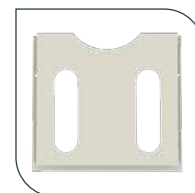


## Document Holders

Designed to standard A4 documents such as procedures and diagrams to ensure that they are kept clean and conveniently located.

Part Number	Description	To suit enclosure width (mm)
IPPLN	A4 Plastic	all
IPPLN04/35	A4 Metal	400 & above
IPPLN04/80▲	A4 Metal – Folder	400 & above
IPPLN06/15	A3	600 & above
IPPLN06/35▲	A3 Metal	600 & above
IPPLN06/80▲	A3 Metal – Folder	600 & above

▲ Available on request.



IPPLN

## Schedule Holders

Used to ensure maintenance schedules are always displayed prominently.

Part Number	Description	Mounting	Colour	Dimensions (mm)			To suit enclosure (mm)	
				Height	Width	Depth	Height	Width
IPLC150▲	150 line	Door rail	Pebble Grey RAL7032	255	210	–	400	300
IPLC40▲	40 line			230	110	–	300	200
LCH40	40 line	Tape or rivets	Light Grey RAL7035	230	110	8	300	200
LCH60	60 line			260	210	8	400	300
LCH78▲	78 line			380	110	8	500	200

▲ Available on request



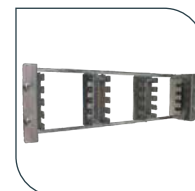
IPLC

## Backmount Frame

Part Number	Description	Height (RU)
FCDD15/19*▲	15-Way, 19 inch	3

▲ Available on request

\* 19 inch mounting rails required refer to page 88.



FCDD15/19

## Load Centre

Part Number	Description	Height (RU)
FCLC19/19*	19-pole, 19 inch	5

\* 19 inch mounting rails required refer to page 88.



FCLC19/19

# Monarch IP

## Accessories to suit all Monarch IP enclosures

### General Accessories

A range of general accessories to suit all Monarch IP enclosures.

Part Number	Product	Description
IPNLK <sup>▲</sup>	Night latch kit bracket	To enable Lockwood deadbolt to be fitted
IPP06 <sup>▲</sup>		M6
IPP10 <sup>▲</sup>	Hole plug (pack of 20)	M10
IPP13 <sup>▲</sup>		M13
IPBO612		M6 x 12mm
IPBO625		M6 x 25mm
IPBO812	Bolt – hex head (pack of 20)	M8 x 12mm
IPBO825		M8 x 25mm
IPBO830 <sup>▲</sup>		M8 x 30mm
IPBO840/D <sup>▲</sup>		M8 x 40
IPN06 <sup>▲</sup>	Accessory kit seal screw (pack of 10)	M6
IPN08 <sup>▲</sup>	Hex head nuts (pack of 20)	M8
IPCG06	Cage Nuts (pack of 20)	M6
IPCG08		M8
IPCN06	Foam back nuts (pack of 20)	M6
IPCN08		M8
IPTO616 <sup>▲</sup>	Screws – taptite (pack of 20)	M6 x 16mm
IPTPO616/S <sup>▲</sup>	Tamper proof screws with security bit	M6 x 16mm (pack of 10)
IPWF06 <sup>▲</sup>	Flat washers (pack of 20)	M6
IPWF08 <sup>▲</sup>		M8
IPWG06	Seal washers (pack of 20)	Small
IPWS06 <sup>▲</sup>	Star washers (pack of 20)	M6
IPWS08		M8
IPWSP06	Spring washers (pack of 20)	M6
IPWSP08		M8
IPOR06 <sup>▲</sup>	Sealing ring (pack of 20)	M6
IPCDH <sup>▲</sup>	D handle	Chrome
ECESK <sup>▲</sup>	Earth strap kit	–
IPZRLG <sup>▲</sup>	Z Rail	760mm
TUP/P20	Touch Up Paint (300g)	Pebble Grey RAL7032
TUP/P29		Light Grey RAL7035

<sup>▲</sup> Available on request

# Locks

Locks to suit Monarch IP enclosures



## Standard Locks

Enclosure	Zinc Coated Steel	Stainless Steel	Aluminium
≤1600mm	IP020 – chromed steel lock with 7mm square steel insert	IP020/S – black powdercoated lock with 7mm square stainless steel insert	IP020/PS – chromed steel lock with 7mm square steel insert
+1600mm	IP050 – lockable L handle keyed 92268	IP050 – lockable L handle keyed 92268	IP050 – lockable L handle keyed 92268

## Lock Options for Monarch IP Enclosures

There are a number of lock options available that are suitable for use on Monarch IP enclosures. Contact your local sales representative to discuss your requirements.

Product	Description	Part Number	Standard Lock/Insert	Alternative insert	Keys	
					Lockable handles	Zinc, 4-way
Turnbuckle	chromed steel	IP020	7mm square – steel	See below		SKZ
	powdercoated	IP020/PS	7mm square – stainless steel	See below		SKZ
	stainless steel	IP020/S	7mm square – stainless steel	See below		SKZ
		IP028S/S	8mm square slotted – stainless steel	See below		
Wing knob	lockable	IP030	Key code 92268			SK3
	lockable	IP030/CL001	Key code CL001			
	lockable	IP030/L003	Key code L003			
	padlockable	IP032	Suit 8mm hasp			
	padlockable - stainless steel	IP032/S	Suit 8mm hasp			
	non-lockable	IP111	–			
T-handle	lockable	IP040	Key code 92268			SK3
L-handle	lockable	IP050	Key code 92268			SK3
	lockable – stainless steel	IP050/S	Key code 92268			SK3
	padlockable – steel	IP052	–			
	padlockable – stainless steel	IP052/S	–			
Swing handle	padlockable – steel	IP060	Suitable for up to 9mm diameter padlock shackle.			
	padlockable – stainless steel	IP060/S				



## Lock Inserts for IP020 Locks

The IP020 locks are available with an option lock insert for use on all Monarch IP enclosures. Contact your local sales engineer to discuss your requirements.

To suit lock style	Description	To suit lock	Standard Insert	3mm double bit pin		8mm square		8mm square slotted		8mm triangle	
				Steel	Stainless Steel	Steel	Stainless Steel	Stainless Steel	Steel	Stainless Steel	
Turnbuckle	chromed steel	IP020	7mm square – steel	LKINS3P		LKINS8S		LKINS8SS/S		LKINS8T	
	powdercoated with SS insert	IP020/PS	7mm square – stainless steel		LKINS3P/S		LKINS8S/S	LKINS8SS/S			LKINS8T/S
	stainless steel	IP020/S	7mm square – stainless steel		LKINS3P/S		LKINS8S/S	LKINS8SS/S			LKINS8T/S
Key required – zinc			SKZ	SKZ	SKZ	SKZ	SKZ	SKZ	SKZ	SKZ	SKZ

# Enclosure LED Lighting

Our LED lighting solutions provide light inside an enclosure when visibility is required for both safety and efficacy.

High output, small form factor LED lighting. Up to 4 units can be daisy chained from the one power supply. Allows for the opening of full height swing frames or hinged escutcheons when fitted to the roof. The optional PIR movement sensor can be used for power efficiency as an automatic door switch. All light kits can be mounted directly onto 19" rack rails. In the absence of 19" rack rails a mounting kit is available to suit the enclosure size.

B&R's LED lighting solutions are applied to provide excess light within an enclosure and becomes a continuous light source to provide extra visibility.

- Energy saving up to 50% compared with traditional fluorescents under the same lux.
- Life span – over 50,000 hours
- Available in cool white, neutral white and warm white colour temperatures.
- Available in 12V and 24V options.
- Easy linking up to 36 watts per run.
- Easy to install.
- Low voltage — safe and efficient.
- Manufactured from aluminium with black plastic end caps and acrylic lens.
- Light source – SM3528 LED
- Operating temperature – -20°C to 40°C indoors



This information is provided as a guide only. Contact your local sales representative to discuss your requirements.

## Technical Operating Data

Length (mm)	Voltage (DC)	Power (W)	Radiance	Colour Temp	Luminous Flux (lm)*	LED Current (A)
300	12/24	3	90°	4400	280/360	0.18
500	12/24	5	90°	4400	460/600	0.18

## Monarch IP

Part Number	Power (V)	LED Light	Power Supply	Inclusions			Required Mounting Bracket			To suit enclosure	
				Splitter	Switch	Connectors	IPLKB04	IPLKB06	IPLKB08	Width (mm)	Optional
BRLED300	12	•	•		•		•			400	BRMOT PIR Motion Sensor
BRLED300/24	24	•	•		•		•			400	
BRLED500	12	•	•		•			•		600, 700 or 800	
BRLED500/24	24	•	•		•			•		600, 700 or 800	
BRLEDK03	–	•		•		•				400	
BRLEDK05	–	•		•			•	•		600, 700 or 800	



## AUSTRALIA

### Sales

T: 1300 Enclosures (1300 362 567)  
E: sales@brenclosures.com.au  
brenclosures.com.au

### QUEENSLAND

Brisbane Manufacturing, Sales & Warehouse  
51 Stradbroke Street  
Heathwood QLD 4110  
(PO Box 1151)  
Browns Plains BC QLD 4118  
T: +61 7 3714 1111  
E: salesqld@brenclosures.com.au

### NORTH QUEENSLAND

Townsville Sales & Warehouse  
Unit 4 / 780 Ingham Road  
Mount Louisa QLD 4814  
(PO Box 7615)  
Garbutt QLD 4814  
T: +61 7 4727 1900  
E: salestvl@brenclosures.com.au

### NEW SOUTH WALES

NSW & ACT Sales & Warehouse  
7 Metters Place Wetherill Park  
NSW 2164  
T: +61 2 9915 9555  
E: salesnsw@brenclosures.com.au

### NEWCASTLE Distribution

109-111 Broadmeadow Road  
Broadmeadow NSW 2292  
T: +61 2 4961 4433

### VICTORIA

VIC & TAS Sales & Warehouse  
50-52 Sunmore Close  
Heatherton VIC 3202  
T: +61 3 9552 0552  
E: salesvic@brenclosures.com.au

### TASMANIA Distribution

W P Martin Pty Ltd  
85 Elizabeth Street  
Launceston TAS 7250  
T: +61 3 6331 5545

## SOUTH AUSTRALIA

SA & NT Manufacturing, Sales & Warehouse  
505 Grand Junction Road  
Wingfield SA 5013  
T: +61 8 8417 6222  
E: salessa@brenclosures.com.au

## NORTHERN TERRITORY Distribution

Cnr Hidden Valley & Beaton Roads  
Berrimah NT 0828  
T: +61 8 8947 0870

## WESTERN AUSTRALIA

WA Sales Office & Warehouse  
6 Montgomery Way  
Malaga WA 6090  
T: +61 8 6310 4777  
E: saleswa@brenclosures.com.au

## NEW ZEALAND

Sales  
B&R Enclosures Limited  
T: 0800 Enclosures (0800 362 567)  
E: sales@brenclosures.co.nz  
brenclosures.co.nz

## AUCKLAND Distribution

Unit 6/103 Cryers Road  
East Tamaki Auckland NZ 2013  
T: +64 9 265 2097  
E: sales@brenclosures.co.nz

## CHRISTCHURCH Distribution

17 Washbournes Road  
Wigram Christchurch NZ 8042  
T: +64 3 348 0659  
E: sales@brenclosures.co.nz

## CHINA

### Sales

B&R Enclosures (Suzhou) Co. Ltd  
E: sales@brenclosures.com.cn  
brenclosures.cn

## SUZHOU

Suzhou Sales Office & Manufacturing  
Building 45 Chuangtuo Industrial Zone  
SIP, Suzhou 215122  
PEOPLE'S REPUBLIC OF CHINA  
T: +86 512 8718 2139  
E: sales@brenclosures.com.cn

## MIDDLE EAST

### Sales

B&R Gulf  
M: +966 503 496 592  
T: +966 381 2869 1 or +966 5034 9659 2  
E: sales@brgulf.com.sa  
brgulf.com

## DAMMAM Manufacturing, Sales & Warehouse

B&R Gulf  
Factory No. 12, Modon Buildings,  
King Salman Road, Industrial Area 3,  
Dammam, Saudi Arabia  
M: +966 503 496 592  
T: +966 381 2869 1 or +966 5034 9659 2  
E: sales@brgulf.com.sa  
brgulf.com