

Horizon T Series

Residential metering enclosures for TAS applications



- Designed for single or multi-phase direct connect metering installations.
- Complies and exceeds both TAS and Australian Supply Authority requirements.
- Designed with robust and durable quality while providing safety and performance.
- Suitable for residential and light commercial metering applications.
- The RotaDIN® removable DIN rail allows for easy installation.
- Ratchet sliding cable entry shut-off to Wiring Rule requirements.
- AS/NZS 3012 compliant with built-in cord retainer.
- Identification and covered labelling sections.
- Padlock facilities.
- Region D wind rated to AS1170.2-2002: Structural design actions – Wind actions.
- Manufactured from 1.0mm galvanised steel to Z275 or 316 stainless steel.



T22

ORDERING GUIDE

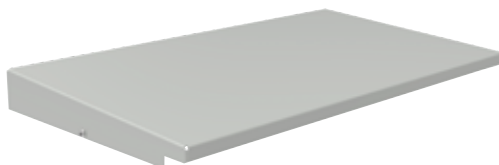
Part Number	DIN Space	Dimensions (mm)			Panel (mm)			Material & Finish
		Height	Width	Depth	Height	Width	Depth Behind	
T20B	24-pole	688	485	278	350	365	75	Galvanised Steel RAL7035
T20B/S [▲]	24-pole	688	485	278	350	365	75	Stainless Steel N4 Finish
T22	36-pole	860	485	278	380	400	75	Galvanised Steel RAL7035
T9/PKIT	4.5-pole	-	-	-	300	350	-	-

▲ Available on request.

ACCESSORIES

Part Number	Product	Description	T20B	T20B/S	T22
HZN/FK8	Flush Kit	Flush mounting kit	•	•	
CLV001	Lock	Coin lock	•	•	•
HZN/ROOF	Roof	Rainhood for weather protection	•		•
HZN/PLINTH	Plinth - Zinc Coated Steel	Designed to mate under a standard meter box. Plinth dimension: 690Hx485Wx240D	•		•
HZN/PLINTH/S [▲]	Plinth - Stainless Steel	Compliant to region C wind load according to AS/NZS1170.2		•	

▲ Available on request.



HZN/ROOF



HZN/PLINTH



T20B