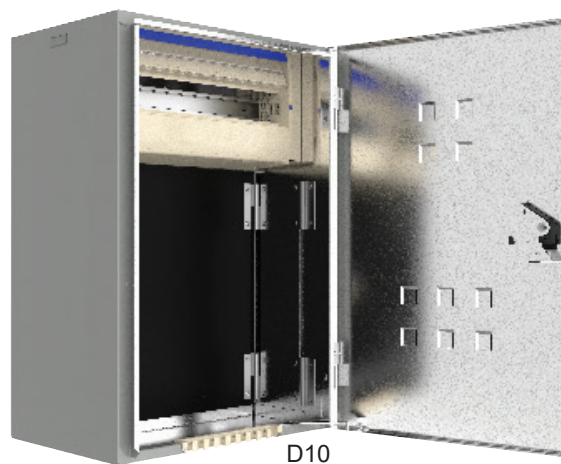


Horizon D Series

Residential metering enclosures for NT applications



- Designed for both single and multi-phase installations.
- AS/NZS 3012 compliant for construction sites as standard.
- Provide safety, quality and performance.
- Suitable for domestic and light commercial metering applications.
- Top cable entry has ratchet aperture shut-off slide.
- RotaDIN rotating / removable DIN section.
- Cord retainer for easy retention of extension cords.
- Circuit identification label area with protective cover.
- Weatherproof installation label for AS/NZS3000 compliance.
- Padlockable facility.
- External frame mounting brackets.
- Region D wind rated to AS1170.2-2002: Structural design actions – Wind actions.
- Manufactured from 1.0mm thick galvanised steel.
- Powdercoated Light Grey RAL7035.



D10

ORDERING GUIDE

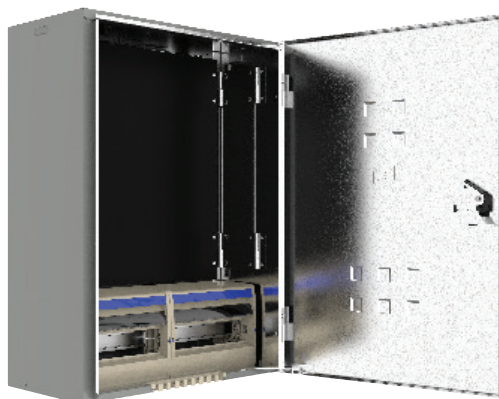
Part Number	DIN space	Dimensions (mm)				Panel (mm)		
		MCB	Height	Width	Depth	Height	Width	Depth Behind
D10*	18-pole	63A	600	400	300	390	385	75
D20	24-pole		688	485	278	480	461	75
NT/DIN^	18-pole		600	600	270	575	560	75

* Sized for block construction work.

^ Meter panel does not have holes pre-drilled.

ACCESSORIES

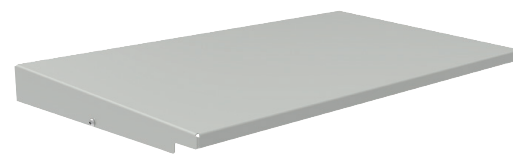
Part Number	Product	Description
HZN/ROOF	Roof	For use in exposed weather applications for D20 only
HZN/PLINTH	Plinth	Designed to mate under a standard meter box. for D20 only Plinth dimension: 690Hx485Wx240D Compliant to region C wind load according to AS/NZS1170.2
HZN/FK8	Flush Kit	For flush mounting



D20



HZN/PLINTH



HZN/ROOF