



**B&R Enclosures**  
**Ausrack Patch**

[brenclosures.com.au](http://brenclosures.com.au)

# Ausrack Patch

19 inch lab rack



Made in  
AUSTRALIA

- Designed to be used for network patching applications.
- The 2-post frame is designed to provide a functional solution where accessibility is a major requirement.
- Open construction suits those who want full access to equipment at all times.
- Load rating tested to AS62208-2006.
- Able to be bayed together using a baying kit.
- Supplied flat packed with all fixings.
- Quick and easy-to-assemble with only 12 bolts.
- Base includes fixing points for bolting to floor.
- RU marked rails for easy placement of equipment.
- Manufactured from 1.6mm zinc coated steel
- Powdercoated textured Matt Black.

## Comes standard with:

- RU marked frame



2 patch racks joined together with cable management are shown for illustrative purposes. Cable management can be purchased separately.

## ORDERING GUIDE

Part Number	RU	Dimensions (mm)			Weight (kg)
		Height (A)	Width (B)	Depth (C)	
AL40U <sup>▲</sup>	40	1930	550	375	16.5
AL45U	45	2155	550	375	17.0

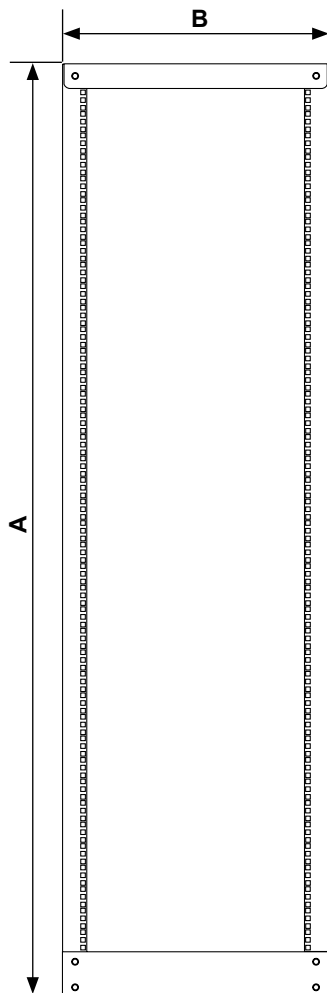
<sup>▲</sup> Available on request

# Ausrack Patch

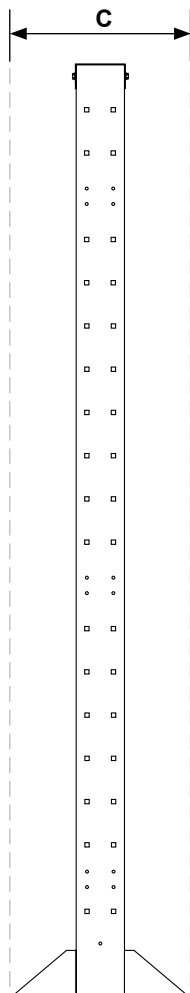
19 inch lab rack



## TECHNICAL DRAWINGS



Front View



Side View

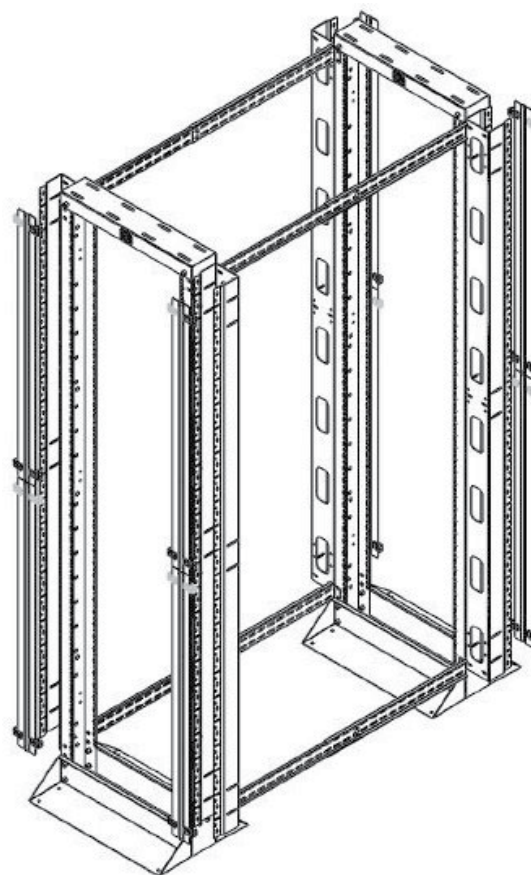
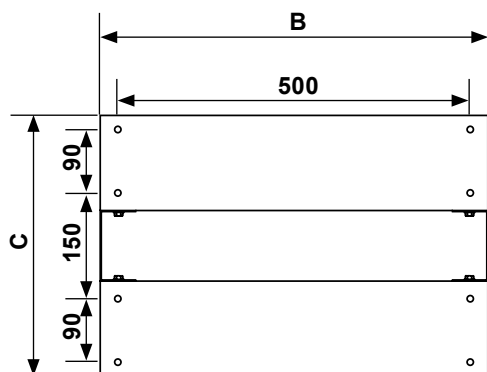


Illustration shows 2 x Ausrack Patch racks bayed together with the joiner kit (ALJK) and additional cable management



Base View

## Accessories

### Blanking Panels - Eziblack

The adjustable tool-less blanking panels simply snap to the size you need and pushes onto the 19" mounting rails. The blanking panels can be easily snapped into 1RU increments to fit any gap. Made from UL94 fire rated and anti-static ABS plastic.

Part Number	Description	RU	To suit cabinets & frames
ARBP6U	Supplied as 6 x 1RU plastic panels	1	All B&R Data ICT cabinets and frames



ARBP6U

### Blanking Panels - Metal

Used to control airflow within the rack. They are manufactured from 1.2mm steel with a powdercoated matt black surface finish.

Part Number	RU	Dimensions (mm)		To suit cabinets & frames
		Height (mm)	Width (mm)	
EBP1U	1	44	483	All B&R Data ICT cabinets and frames
EBP2U	2	88	483	
EBP3U	3	132	483	
EBP4U	4	177	483	
EBP5U▲	5	222	483	
EBP6U▲	6	266	483	



EBP

### Brush Strips - Ezibrush™

Keeps hot exhaust air away from cool intake air, extending the life of your equipment. These panels have a brush strip overhanging the 1RU size by an extra 5mm allowing simple management of air gaps when placed alongside other equipment.

Part Number	Description	RU	To suit cabinets & frames
ARBPB1U▲	Horizontal, 19" black, pack of 5 strips	1	All B&R Data ICT cabinets and frames



ARBPB1U

## Cable Management - Horizontal

Cable management is an efficient and tidy way to keep on top of high density cabling in a rack or cabinet. Horizontal options can be incorporated into any B&R rack or cabinet.

Part Number	RU	Width (mm)	Depth (mm)	Description	To suit cabinets & frames	
Horizontal Cable Management						
ARHCMF1U	1	480	125	Mounts on equipment rails 90mm finger length	All 19" racks	
ARHCMF2U	2	480	125			
ARHCMF4U▲	4	480	125			
Horizontal Cable Management Extended Finger/ Cover Panel						
ARHCMFX1U▲	1		Extended finger 150mm finger length			
ARHCMFX2U▲	2					
ARHCMFX4U▲	4					
Horizontal Cable Management Rings						
ARPCMH1U	1			55mm x 30mm ring		
ARPCMH2U▲	2			55mm x 30mm ring		
ARPCMH4U▲	4			55mm x 30mm ring		
ARPCMH1U100▲	1			40mm x 100mm ring		
Cable Management Rings						
ARPCMR2S	—	161	96	Single zone	Ausrack Plus, CQr, TxD, Patch, IP, Field FE & iLINQ	
ARPCMR3S▲	—	306	96	Single zone*	Ausrack Plus (excluding 600mm frame) & Patch	
ARPCMR3D▲	—	306	250	Two zone*		
Cable Management Hanger						
ARPCMP24	—			24 patch lead hanger, 597mm	Stand alone product wall mount	

\* Needs Cable Zone



ARHCMF1U



ARHCMF4U

# Ausrack Power Rails & Intelligent PDU's

## Power distribution products



- Suitable for distribution of 10A and 15A circuits to a number of 10A SAA outlets or IEC outlets inside an enclosure.
- Horizontal and vertical power rails used for power distribution inside cabinets and enclosures.
- Also available with surge protection options.
- Suitable for use in all Ausrack cabinets.
- Custom power rails are available on request.

Comes standard with:

- Power rail
- 2m lead
- Mounting brackets
- All fixing hardware



ARPRV101015

## ORDER GUIDE - STANDARD

Part Number	Orientation	RU	Description	Product Range
ARPRH61010	Horizontal	1	6 x 10A SAA Outlet 10A SAA Plug	All B&R Data ICT cabinets and frames
ARPRH61015		1	6 x 10A SAA Outlet 15A SAA Plug	
ARPRH101010		2	10 x 10A SAA Outlet 10A SAA Plug	
ARPRH101015		2	10 x 10A SAA Outlet 15A SAA Plug	
ARPRV61010	Vertical	10	6 x 10A SAA Outlet 10A SAA Plug	Ausrack Plus, CQr, TxD, Patch, IP, Field FE & iLINQ
ARPRV61015▲		10	6 x 10A SAA Outlet 15A SAA Plug	
ARPRV101010		16	10 x 10A SAA Outlet 10A SAA Plug	
ARPRV101015		16	10 x 10A SAA Outlet 15A SAA Plug	
ARPRV201010		28	20 x 10A SAA Outlet 10A SAA Plug	
ARPRV201015		28	20 x 10A SAA Outlet 15A SAA Plug	
ARPRV10C13C14		16	10 x 10A IEC320-C13 Outlet, 10A IEC320-C14 Plug	
ARPRV10C13C20		16	10 x 10A IEC320-C13 Outlet, 16A IEC320-C20 Plug	



ARPRH61015



ARPRV61015



ARPRH101010



ARPRH61010



ARPRH101015



ARPRV10C13C14

▲ Available on request



# Ausrack Power Rails & Intelligent PDU's

Power distribution products



## ORDER GUIDE - SURGE PROTECTION

Part Number	Orientation	RU	Description	Product Range
ARPRHS61010	Horizontal	1	6 x 10A SAA Outlet, 10A Captive Plug	All B&R Data ICT cabinets and frames
ARPRHS61015▲		1	6 x 10A SAA Outlet, 15A Captive Plug	
ARPRVS101015	Vertical	17	10 x 10A SAA Outlet, 15A Captive Plug	Ausrack Plus, CQr, TxD, Patch, IP, Field FE & iLINQ



## Intelligent PDU's and Customised Power Rail Solutions

Intelligent PDUs, or iPDUs, are a small but essential part of the data centre energy supply chain. An Intelligent PDU works like a brain within the rack, providing comprehensive, accurate energy measurement data needed to reduce waste, enhance operations, and prove the business case for optimisation.

The Intelligent Power Distribution Unit sits within the rack continually looking for threats from electrical circuit overloads, and any physical or environmental conditions which might place critical IT computing loads at risk.

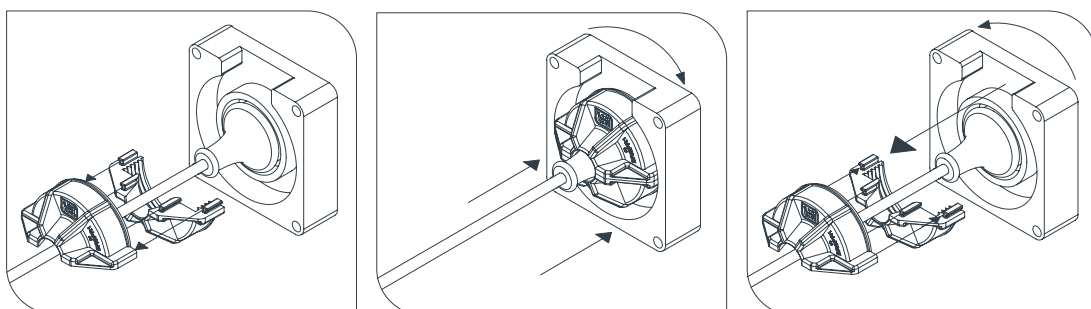
B&R is able to provide a range of Intelligent PDU's to suit any Data ICT project application. Speak to one of our team about your requirements today.

## Captive Plug Ring

- An easy-split mechanism allows plug ring to be retro-fitted without cutting the lead.
- Will suit most 10A or 15A single phase moulded SAA plugs.
- Will screw onto typical IP66 sockets similar to the 56 series.
- Clear design makes it easier to view plug for inspection.
- Manufactured from polycarbonate



Part Number	Finish	Sold as	Carton Qty
BRSPR1	Transparent	Single Plug	10



▲ Available on request

## Accessories

### Cable Management - Vertical

Cable management is an efficient and tidy way to keep on top of high density cabling in a rack or cabinet. Vertical options can be incorporated into most B&R rack or cabinet.

Part Number	RU	Width (mm)	Depth (mm)	Description	Mounting	To suit cabinets & frames (mm)
Vertical Cable Management System						
ARVCMS40U10	40	100	165	Cable zone required* U-Channel system with cable fingers, connection brackets and cover flaps 90mm finger length	Off posts or Horizontal mounting rails	Ausrack Plus, CQr, TxD, Patch, IP & iLINQ
ARVCMS45U10	45	100	165			Ausrack Plus, CQr, TxD, Patch & iLINQ
ARVCMS40U20▲	40	200	165			Ausrack Plus & Patch
ARVCMS45U20▲	45	200	165			
ARVCMS40U150▲	40	150	198	Cable zone required* U-Channel system with cable fingers, connection brackets and cover flaps		Ausrack Plus & Patch
ARVCMS45U150▲	45	150	198			
ARVCMSX40U10▲	40	100	250	Cable zone required* Extended Finger 150mm finger length		Ausrack Plus, CQr, TxD, Patch & iLINQ
ARVCMSX45U10▲	45	100	250			
ARVCMSX40U20▲	40	200	250	Cable zone required* Extended Finger		Ausrack Plus & Patch
ARVCMSX45U20▲	45	200	250			



ARVCMS40U10



ARVCMSX40U20

### Copper Earth Bars

Installation of a copper earth bar into a data rack or cabinet will allow the active equipment to be grounded, providing protection from static electricity build up.

Part Number	Description	RU	Product Range
ARPEBH1U▲	Horizontal	1	All B&R Data ICT cabinets and frames



# Accessories



## General Accessories

Part Number	Product	To suit enclosure
ALJK▲	Adjustable joiner kit, 600D - 1200D	Ausrack Patch
ARCN	Cage nuts, screws and washers Pack of 50	
ARSTUD20▲	Rack Studs, pack of 20	All B&R Data ICT products
ARSTUD100▲	Rack Studs, pack of 100	
ARWB1U	Light duty wall mount 19" brackets.	1RU x 500mmW x 200mmD
ARWB2U▲	Suitable when cabinet mounting is not practical and space is limited. One side is hinged to allow patch panels and equipment to be swung out for rear access.	2RU x 500mmW x 200mmD
ARWB4U▲		4RU x 500mmW x 200mmD



ARWB1U &  
ARWB2U



ARCN



ARSTUD100

## Fans

Both the two and four unit fan kits install into the roof or a bottom plinth. The two unit fan kit can also be fitted into the equipment rails. All fans are supplied with 2m flex and 10A SAA plug.

Part Number	No. of Fans	Description	RU	To Suit Enclosure
ARPAF2▲	2	High speed, axial	1	Ausrack Plus, Patch, IP, Field FE & iLINQ
ARPAF2T	2	High speed, axial, with integrated thermostat	1	
ARPAF2WT▲	2	Whisper quiet with integrated thermostat	1	

\*Fitting in roof and base only

All fans have a 10 Amp 3-pin plug on the power cable.

Units with 2 fans have an airflow of 220cfm. Units with 4 fans have an airflow of 440cfm.

Whisper quiet unit with 2 fans has an airflow of 110cfm and a unit with 4 fans has an airflow if 220cfm.



ARPAF2



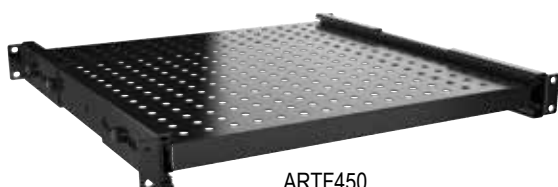
ARPAF2WT

## Shelves

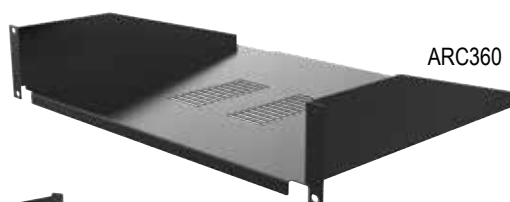
Providing a stable platform for other miscellaneous gear, shelving mounts off the 19" rack rails. All shelves are vented to allow vertical airflow.

Part Number	Description	RU	Depth (mm)	Load Rating (kg)	Suit Cabinet Depth	Product Range
ARTF450	Telescopic, full extension	1	450	20	600mm deep	All B&R Data ICT cabinets and frames
ARTH450▲	Telescopic, half extension, locking	1	450	40	600mm deep	
ARC210	Cantilever	2	210	10	—	
ARPCS150▲		2	150	10	—	
ARPCS250▲		2	250	10	—	
ARPCS350▲		2	350	10	—	
ARPCS450▲		2	450	10	—	
ARKBC▲	Keyboard pivot tray accessory*	2	—	—	—	
ARPFL600	Fixed, light duty	1	450	50	600	
ARPFH600	Fixed, heavy duty	1	450	160	600	
ARC360	Cantilever	2	360	10	—	All B&R Data ICT cabinets and frames *excluding all ARIP <400mm deep

\* Requires half extension telescopic shelf to mount.



ARTF450



ARC360



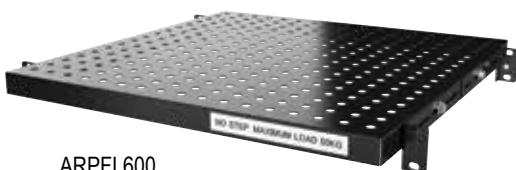
ARKBC



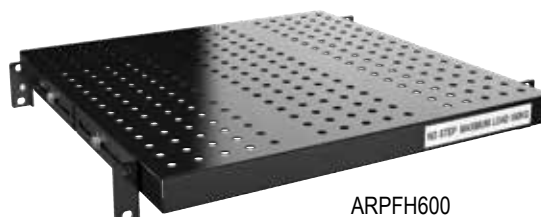
ARPCS250  
shown from rear



ARPCS450



ARPFL600



ARPFH600

## **AUSTRALIA**

### **Sales**

T: 1300 Enclosures (1300 362 567)

E: [sales@brenclosures.com.au](mailto:sales@brenclosures.com.au)

[brenclosures.com.au](http://brenclosures.com.au)

### **QUEENSLAND**

Brisbane Manufacturing, Sales & Warehouse

51 Stradbroke Street

Heathwood QLD 4110

(PO Box 1151)

Browns Plains BC QLD 4118

T: +61 7 3714 1111

E: [salesqld@brenclosures.com.au](mailto:salesqld@brenclosures.com.au)

### **NORTH QUEENSLAND**

Townsville Sales & Warehouse

Unit 4/ 780 Ingham Road

Mount Louisa, QLD 4814

(PO Box 7615)

Garbutt QLD 4814

T: +61 7 4727 1900

E: [salestvl@brenclosures.com.au](mailto:salestvl@brenclosures.com.au)

### **NEW SOUTH WALES**

NSW & ACT Sales & Warehouse

7 Metters Place

Wetherill Park NSW 2164

T: +61 2 9915 9555

E: [salesnsw@brenclosures.com.au](mailto:salesnsw@brenclosures.com.au)

### **NEWCASTLE Distribution**

Ross Joice Agencies Pty Ltd

109-111 Broadmeadow Road

Broadmeadow NSW 2292

T: +61 2 4961 4433

### **VICTORIA**

VIC & TAS Sales & Warehouse

50-52 Sunmore Close

Heatherton VIC 3202

T: +61 3 9552 0552

E: [salesvic@brenclosures.com.au](mailto:salesvic@brenclosures.com.au)

### **TASMANIA Distribution**

W P Martin Pty Ltd

85 Elizabeth Street

Launceston TAS 7250

T: +61 3 6331 5545

### **SOUTH AUSTRALIA**

SA & NT Manufacturing, Sales & Warehouse

505 Grand Junction Road

Wingfield SA 5013

T: +61 8 8417 6222

E: [salessa@brenclosures.com.au](mailto:salessa@brenclosures.com.au)

### **NORTHERN TERRITORY Distribution**

Jewell Distributors Pty Ltd

Cnr Hidden Valley & Beaton Roads

Berrimah NT 0828

T: +61 8 8947 0870

### **WESTERN AUSTRALIA**

WA Sales Office & Warehouse

6 Montgomery Way

Malaga WA 6090

T: +61 8 6310 4777

E: [saleswa@brenclosures.com.au](mailto:saleswa@brenclosures.com.au)

## **NEW ZEALAND**

### **Sales**

B&R Enclosures Limited

T: 0800 Enclosures (0800 362 567)

E: [sales@brenclosures.co.nz](mailto:sales@brenclosures.co.nz)

[brenclosures.co.nz](http://brenclosures.co.nz)

### **AUCKLAND Distribution**

Matchmaster

Unit 6103 Cryers Road

East Tamaki Auckland NZ 2013

T: +64 9 265 2097

E: [sales@brenclosures.co.nz](mailto:sales@brenclosures.co.nz)

### **CHRISTCHURCH Distribution**

Matchmaster

17 Washbournes Road

Wigram Christchurch NZ 8042

T: +64 3 348 0659

E: [sales@brenclosures.co.nz](mailto:sales@brenclosures.co.nz)