



# RESIDENTIAL & COMMERCIAL CATALOGUE

---

Domestic, commercial and group metering solutions, switchboards, enclosures and associated infrastructure products.



## AUSTRALIA

Sales  
T: 1300 Enclosures (1300 362 567)  
E: sales@brenclosures.com.au  
brenclosures.com.au

### QUEENSLAND

Brisbane Manufacturing, Sales & Warehouse  
51 Stradbroke Street  
Heathwood QLD 4110  
T: +61 7 3714 1111  
E: salesqld@brenclosures.com.au

### NORTH QUEENSLAND

Townsville Sales & Warehouse  
Unit 4 / 780 Ingham Road  
Mount Louisa QLD 4814  
T: +61 7 4727 1900  
E: salestvl@brenclosures.com.au

### NEW SOUTH WALES

NSW & ACT Sales & Warehouse  
7 Metters Place Wetherill Park  
NSW 2164  
T: +61 2 9915 9555  
E: salesnsw@brenclosures.com.au

### NEWCASTLE Distribution

109-111 Broadmeadow Road  
Broadmeadow NSW 2292  
T: +61 2 4961 4433

### VICTORIA & TASMANIA

VIC & TAS Sales & Warehouse  
Unit 1, 60-62 Abbott Road  
Hallam VIC 3803  
T: +61 3 9552 0552  
E: salesvic@brenclosures.com.au

### SOUTH AUSTRALIA

SA & NT Manufacturing, Sales & Warehouse  
505 Grand Junction Road  
Wingfield SA 5013  
T: +61 8 8417 6222  
E: salessa@brenclosures.com.au

### NORTHERN TERRITORY Distribution

Girramaa Pty Ltd  
10 Swan Cres.  
Winnellie Darwin, 0820  
T: +61 8 7936 8607

### WESTERN AUSTRALIA

WA Sales Office & Warehouse  
6 Montgomery Way  
Malaga WA 6090  
T: +61 8 6310 4777  
E: saleswa@brenclosures.com.au

## NEW ZEALAND

Sales  
B&R Enclosures Limited  
T: 0800 Enclosures (0800 362 567)  
E: sales@brenclosures.co.nz  
brenclosures.co.nz

### AUCKLAND Distribution

Unit 6/103 Cryers Road  
East Tamaki Auckland NZ 2013  
T: +64 9 265 2097  
E: sales@brenclosures.co.nz

## CHINA

Sales  
B&R Enclosures (Suzhou) Co. Ltd  
E: sales@brenclosures.com.cn  
brenclosures.cn

### SUZHOU

Suzhou Sales Office & Manufacturing  
Building 45 Chuangtong Industrial Zone  
SIP, Suzhou 215122  
PEOPLE'S REPUBLIC OF CHINA  
T: +86 512 8718 2139  
E: sales@brenclosures.com.cn

## MIDDLE EAST

Sales  
B&R Gulf  
M: +966 503 496 592  
T: +966 381 2869 1 or +966 5034 9659 2  
E: sales@brgulf.com.sa  
brgulf.com

### DAMMAM Manufacturing, Sales & Warehouse

B&R Gulf  
Factory No. 12, Modon Buildings,  
King Salman Road, Industrial Area 3,  
Dammam, Saudi Arabia  
M: +966 503 496 592  
T: +966 381 2869 1 or +966 5034 9659 2  
E: sales@brgulf.com.sa  
brgulf.com

## DISCLAIMER

This brochure has been prepared specifically for customers of the publisher and as a general reference only. B&R Enclosures Pty Ltd engages in a policy of continuous development and improvement of its products and reserves the right to alter, add and/or delete specifications of any products or equipment and change of manufacturing location without notice and without incurring liability. The publisher and any party associated with the production of this catalogue do not accept any responsibility or liability whatsoever (to the extent permitted by law) for any inaccuracy, error, misinformation or misleading statements, whether negligently caused or otherwise, contained in this publication. This publication is protected by copyright and may not be reproduced or copied (using any method of reproduction or copying), sold, transmitted, circulated or otherwise forwarded to third parties, in whole or part, without prior written consent of the author. All registered trademarks and product names appearing herein are the property of the respective owners.



## Table Of Contents

About B&R Enclosures .....	4
Our Locations .....	5
Our Capabilities & Supply Strategies .....	6
Project Services.....	7
The B&R Engagement Loop.....	8
Our Customers, Accreditations & Compliance .....	9
<b>Home Networking</b>	
Overview.....	10
External Use Cabinets.....	11
Internal Use Cabinets.....	12
<b>Metering Enclosures &amp; Accessories</b>	
Horizon Range Overview.....	14
Horizon Q Series .....	16
QLD Series.....	19
QLD Brackets & Accessories.....	20
Horizon N Series .....	21
NSW Series.....	22
NSW MD Series .....	23
Horizon V Series.....	24
VIC MD Series.....	25
VIC CT Series.....	26
VIC Brackets & Accessories.....	27
Horizon S Series.....	29
SA Rebated Sides Enclosures.....	31
SA Straight Sides Enclosures.....	32
SA Brackets & Accessories .....	33
Horizon W Series.....	34
Horizon T Series.....	35
Horizon D Series .....	37
NT Brackets & Accessories .....	38
Hinged Switchboard Frames .....	39
CT Metering.....	40
Metal Enclosures .....	41
DIN Covers .....	42
DIN Rail Enclosures .....	43
Covered Links.....	44
Uncovered Links.....	45
Installation Accessories .....	46
<b>Group Metering Enclosures &amp; Accessories</b>	
Overview.....	48
VIC Group Metering (Pre-Wired).....	49
SA Group Metering (Pre-Wired) .....	50
General Group Metering.....	51
Econo Panelboard .....	52
Superior Panelboard.....	53
Infinity 3G Overview (modular & pre-configured switchboards) .....	55
Product Index .....	57 - 59

# About B&R Enclosures

Since 1955, B&R Enclosures has built a reputation for excellence in design and production, culminating in our position as one of Australia's largest enclosure manufacturers and electrical equipment integration specialists.

As an independent, 100% Australian family owned and operated business, we champion the virtues of quality, innovation, service and value. The emphasis on these aspects has sustained B&R's growth leading to Australian manufacturing and distribution facilities in Brisbane, Adelaide and Sydney and internationally in China and Saudi Arabia.

B&R's knowledge, precision, quality and unwavering commitment to creating repeatable solutions for our clients supports our position as preferred manufacturer for many private, government and commercial projects in some of Australia's harshest environments.

The business encompasses four divisions: Industrial, Data ICT, Hazardous Areas and Residential Commercial. Each division focuses on the unique needs of different market segments.

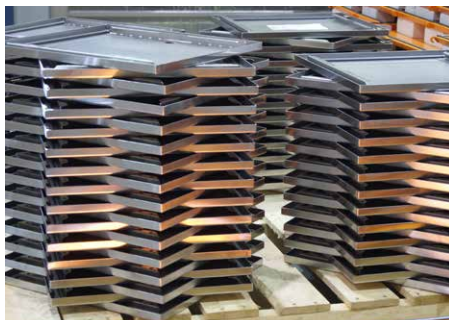
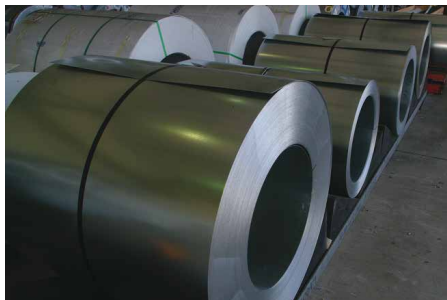
B&R regularly works with partners to provide integrated solutions for major infrastructure and mining projects. These include 'plug and play' switchboard solutions for Rio Tinto's Oyu Tolgoi mine, control stations for Ichthys on-shore LNG processing plant and Australia's NBN Rollout. Ongoing relationships and collaboration are results of our ability to articulate the customer's problem and combine previous experience and knowledge with compliance to local standards.

Electrical integration involves the installation, commissioning and testing of 3rd party components and we are adept at managing the acquisition and storage of technical components through a global supply chain that is structured, customised, agile, repeatable and results-based. Project management and execution is effectively managed at B&R by the co-location of design, supervision, supply coordination and quality control along with manufacturing. Our incorporation of Industry 4.0 delivers real-time data to our project management teams, built around the requirements of individual projects.

Extensive investment in research and development includes an environmental testing facility focussing on climate control to support cooling solutions for equipment exposed to high ambient temperatures and solar radiation.

When utilised as designed, B&R's enclosures are built to out-perform against expectations.

Contact us today to find out how B&R can deliver reliable and trusted outcomes for your project.



B&R Enclosures have purpose-built manufacturing facilities in three locations across Australia, as well as strategic locations in the Gulf and China.



## **Australia**

### ***Brisbane (QLD)***

Global head office, manufacturing, sales and warehousing

### ***Sydney, NSW***

Hazardous manufacturing, sales and warehousing

### ***Adelaide, SA***

Manufacturing, sales and warehousing

### ***Townsville (QLD), Newcastle (NSW), Melbourne (VIC), Perth (WA)***

Sales and warehousing

## **New Zealand**

### ***Auckland***

Sales and warehousing

## **Saudi Arabia**

### ***Dammam***

Hazardous manufacturing, sales and warehousing

## **China**

### ***Suzhou***

Manufacturing, sales and warehousing

# Our Capabilities

Over the years as the company has grown, we have invested significantly in machinery, technology and testing to be able to provide capabilities which our customers benefit from in every order they place. Our current capabilities include:

- Purpose-built Australian facilities in Brisbane (18,000m<sup>2</sup>), Adelaide (4,000m<sup>2</sup>) and Sydney (1,874<sup>2</sup>), providing local labour and logistics
- Complete in-house design and engineering services to assist with creating custom solutions
- End-to-end manufacturing, from coiled steel raw material to commissioning the end product, we provide efficiency and complete quality control
- Variety of substrates and high quality finishes including stainless steel, powder coated and zinc to suit even the most demanding applications
- Modern machinery for any design to be formed and fabricated including automated sheet metal panel benders, punching and shearing centres, electrical equipment integration lines, press brakes, powder coat lines, fabrication cells and assembly lines
- Fully documented process available with full configuration management to support a detailed documentation experience
- Complete project management including supply chain, warehousing and logistics
- In-house and external testing for hazardous area electrical equipment and impact, IP, type testing, static load, seismic, wind load, salt spray, line inspection, shock, vibration, 2000A high current switchboard temperature rise type testing, EMC and MIL-STD
- Continuous improvement with our environmental testing facility for ongoing research and development
- Existing supply agreements with leading OEMs and major raw products distributors supporting loyal and valued relationships climate control and cooling solutions

# Our Supply Strategies



### Made to Stock

These products are available ex stock from all our sales & warehousing branches. Contact your local sales representative to discuss requirements.



### Assembled-to-Order

These products are assembled to order upon receipt of a customer order. All components required to build an ATO item cannot be sold separately and must form part of a kit. Standard lead time is 4-6 weeks from date of order.



### Made to Order

These products are manufactured according to a customer's specification. They are marked in our catalogues as "▲ Available on request" and have a standard lead time of 2-3 weeks.



### Engineered-to-Order

These products are a custom designed product that is 100% fit-for-purpose, delivered on-site and ready for installation. Our design & engineering team can customise an enclosure to suit the application requirements. Contact us for more information.



## Collaboration

- Convert customer requirements to product build specifications
- Work to customer delivery schedule
- Initiate procurement or consignment of stock allocations
- Supply of equipment configuration



## Complete Project Management

- One point of contact
- Responsive communication channels
- DIFOTIS - Delivered In Full On Time In Specification
- Accountability for the delivery of our commitment to customers



## Electrical & Equipment Integration

- Wiring and equipment installed to exact requirements
- Management of free issue, consigned and/or B&R sourced components and equipment
- Stock reporting and job allocation



## Testing & Reporting To Customer Specifications

- Digital reports of product testing and acceptance
- Serialised codes to customer requirements, digital signature, component traceability and unique identifiers
- Real time quality assurance authorisation, approval and confirmation



## Customer Specific Logistics

- Storage and warehouse management
- Site delivery logistics
- Option for removal of product packaging after installation



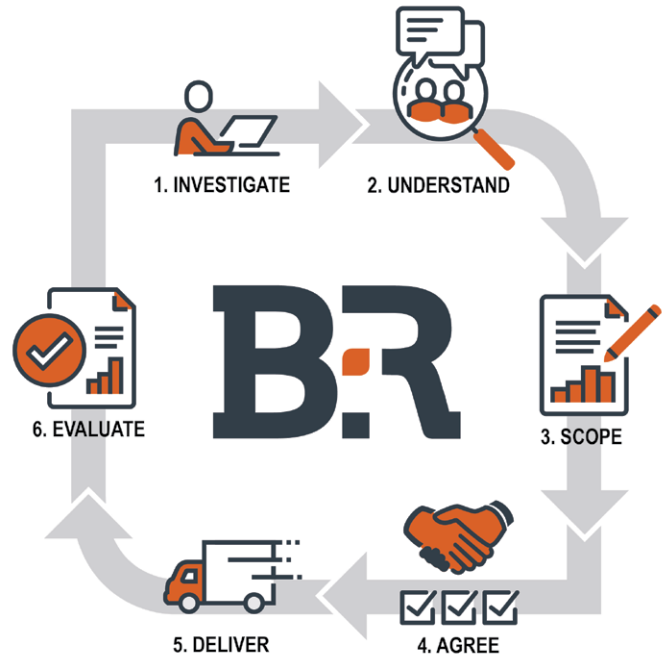
# The B&R Engagement Loop

## (Project Services)

In order to engage successfully with our project customer's, B&R representatives follow a structured service plan.

We take our responsibilities seriously and take pride in fostering collaborative, open relationships with our project customers. Our approach ensures a comprehensive understanding of each project's unique needs, allowing us to deliver tailored solutions that meet diverse applications and technical specifications.

1. Our process begins with **INVESTIGATION**. Before reaching out to a customer or responding to an enquiry, we conduct thorough research into the customer, their project, and any relevant stakeholders.
2. The next step is **UNDERSTANDING**. We engage in detailed discussions with the customer to fully grasp their current challenges and future project goals. These conversations help us identify how our product solutions can address their specific needs.
3. With this valuable insight, we move to the third action: **SCOPING**. We collaborate with our in-house design, engineering, and estimating teams to assess the project requirements, prepare quotes, and create any necessary drawings.
4. Once we have developed a tailored solution, we address any potential variations and proceed to the fourth action: **AGREE**. Once all aspects are finalised and signed off, we move forward with manufacturing and equipment integration.
5. The fifth action is **DELIVERY**. We ensure that the finished product is shipped to the site in accordance with agreed timelines.
6. Finally, to continuously improve our service, we conduct an **EVALUATION**. We reflect on the project and, depending on its size and scope, seek customer feedback to confirm our performance and identify areas for improvement.



## Our Customers



## Accreditations & Compliance

At B&R, quality and value are just the beginning. We strive to deliver quality products developed and manufactured by a team dedicated to excellence, backed by standards, approvals and industry accreditations.



ISO 9001:2015

Every B&R facility undergoes external audits to ensure compliance with strict ISO9001 standards. Our products are rigorously inspected at the end of the production line to guarantee they meet the demands of their intended environment and application.

Quality  
ISO 9001  
SAI GLOBAL



ISO 14001:2015

Sets out the criteria for an environmental management system. It maps out a framework that a company or organisation can follow to set up an effective environmental management system.

Environment  
ISO 14001  
SAI GLOBAL



ISO 45001:2018

An externally audited Occupational Health and Safety Management System.

OHS  
ISO 45001  
SAI GLOBAL



RoHS

The RoHS directive aims to restrict certain dangerous substances commonly used in electronic and electronic equipment.



ASSDA

Australian Stainless Steel Development Assoc.

The Australian Stainless Steel Development Association provides comprehensive technical information on stainless steel. This includes information for users, equipment manufacturers and stainless steel suppliers.

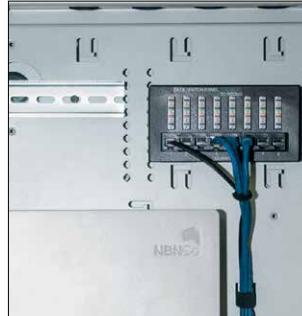
**A range of enclosures to provide a solution for Fibre-To-The-Home (FTTH) connectivity, suitable for fibre and copper cables.**

The home networking enclosures can be either surface or flush mounted and meets the requirements outlined in NBN's Residential Preparation and Installation Guidelines.

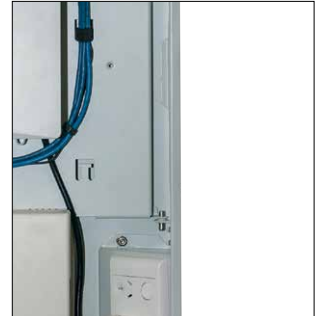
Options include basic to fully feature and are aesthetically designed to fit into any home whilst eliminating unsightly cabling to the enclosure.

**Features Include:**

- Suitable for mounting internally.
- 4mm diameter bursts for easy mounting of DIN rail.
- Industry standard hole pattern for flexible third party equipment installation.
- Space for additional port patch units.
- Hinged mounting pan allows easy access behind mount pan to route fibre to NTD enclosure.
- Supplied with double GPO compliant with AS/NZS3000 (on fully featured model only).
- Cable entries provide pre-punched knockouts for easy cable access.
- Mounting position for NBN battery backup power supply.
- Mounting position with screws for standard NBN NTD enclosure.
- Supplied with one 8-port patch unit (on selected models only).
- Available with window front door or full steel door option.
- Optional flush kit available.



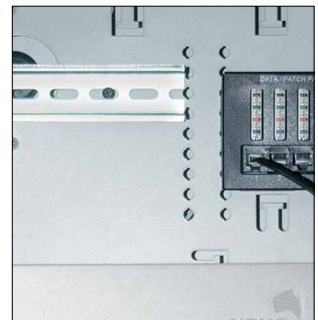
Mounting positions and holes for PSU and NTD. Included as standard with screws, for a standard NBN NTD enclosure.



Hinged mounting pan allows easy access behind mounting pan to route fibre to NTD enclosure.



Supplied with double GPO – Specific models are supplied with double GPO compliant with AS/NZS3000.



Industry standard 6" hole pattern for flexible third party equipment.



Supplied with one 8-port patch units – No additional costs for small patching requirements. (On selected models only).



4mm diameter bursts for easy mounting of DIN rail.



Cable entries provide pre-punched knockouts for easy cable access.



Power Supply Unit (not included) – Mounting position for NBN battery backup power supply.

# Home Networking

External use cabinet



- Suitable for most home networking applications.
- A solution for Fibre-To-The-Home (FTTH) connectivity.
- Can be mounted directly under any 485mm wide Horizon series enclosure.
- Metal mounting pan.
- OptiComm approved.
- Manufactured from 1.0mm zinc coated steel.
- Powdercoated Light Grey RAL7035.



## ORDERING GUIDE

Part Number	Inclusions	Dimensions (mm)			Mounting Pan Dimensions (mm)		
		Height	Width	Depth	Height	Width	Thickness
HZN/COM1	Metal mounting pan	430	485	200	350	440	1.6

# Home Networking

Internal use cabinets



- Suitable for Fibre-To-The-Home (FTTH) connectivity.
- Designed to suit both fibre and copper lines.
- Can be surface or flush mounted.
- Available as fully featured or basic option.
- Easy mounting of DIN rail.
- Space for additional port patch panels.
- Industry standard 6 inch hole pattern.
- Mounting position for NBN battery back up power supply.
- Acrylic front door for Wi-Fi signal.
- Patch panel (CAT6) and double GPO in fully featured product.
- Manufactured from 1.0mm zinc coated steel.
- Powdercoated Traffic White RAL9016.



## ORDERING GUIDE

Part Number	Inclusions			Dimensions (mm)			Window Opening (mm)		Mounting Centres (mm)		Weight (kg)
	GPO	8 Way CAT 6 Patch Panel	Door Type	Height (A)	Width (B)	Depth (C)	Height (D)	Width (E)	Height (F)	Width (G)	
NBN-HDC01			Window	650	380	120	520	350	547	150	8.5
NBN-HDC02 <sup>▲</sup>			Window	1000	380	120	852	350	897	150	11.5
NBN-HDC10	•	•	Window	650	380	130	520	255	540	150	9.0
NBN-HDC13	•		Window	650	380	130	520	255	540	150	9.0
NBN-HDC20	•	•	Window	1000	380	130	852	255	850	150	12.0
NBN-HDC23	•		Window	1000	380	130	852	255	850	150	12.0
NBN-HDC15	•	•	Metal	650	380	130	–	–	540	150	10.0
NBN-HDC17	•		Metal	650	380	130	–	–	540	150	10.0
NBN-HDC25 <sup>▲</sup>	•	•	Metal	1000	380	130	–	–	850	150	13.0
NBN-HDC27	•		Metal	1000	380	130	–	–	850	150	13.0

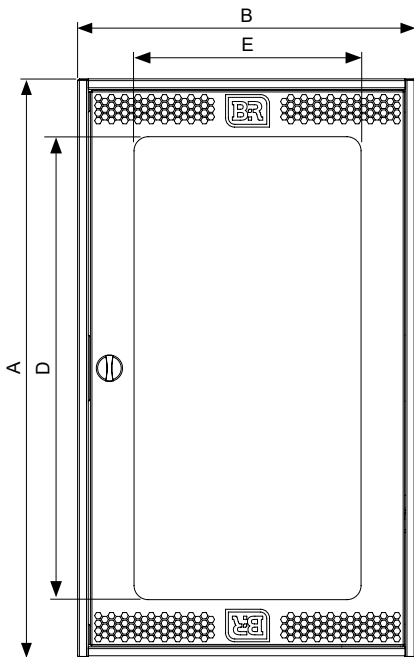
## ACCESSORIES

Part Number	Description
NBN-HDCFK1	Flush kit suitable for 650mm high enclosures
NBN-HDCFK2	Flush kit suitable for 1000mm high enclosures

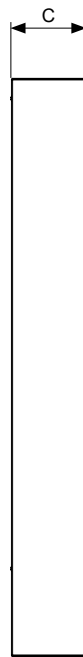


NBN-HDCFK1

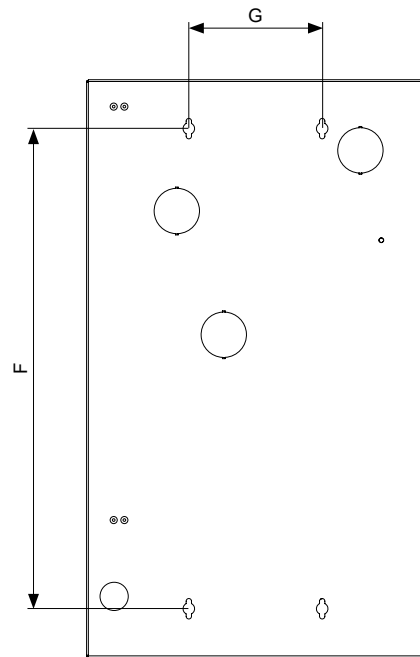
TECHNICAL DRAWINGS



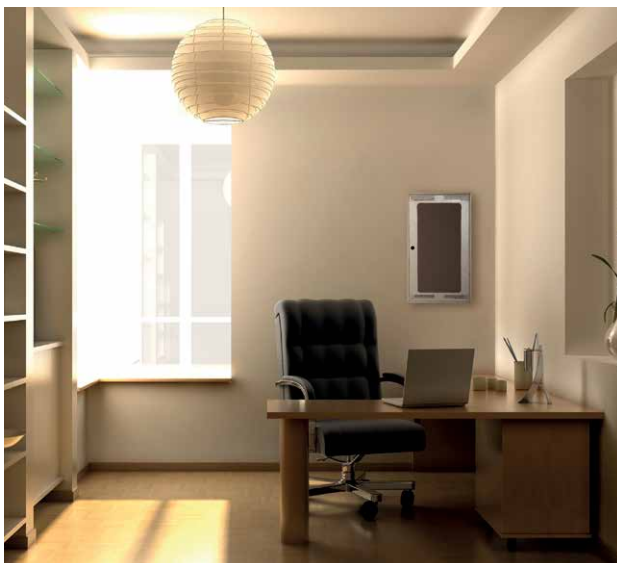
Front View



Side View



Rear View



# Horizon Series Metering Enclosures

**At B&R, safety is our goal and the Horizon series is packed with features that you will never want anything else. Fast. Safe. Australian.**

B&R's Horizon Series is designed and manufactured in Australia, and specifically suited to the unique local environments within Australia.

The unique features of this product series provide increased safety, quality and performance, while being suitable for both residential and light commercial applications and single and multi-phase installations.

The Series complies with all Australian Supply Authority Service and Installation Rules (SIR) integrating AS/NZS 3000, AS/NZS 3012 and AS/NZS 61439 for construction and demolition sites.





Panel retainer is a captive ¼ turn panel retainer (stays with the panel) preventing nuts from falling off and being lost.



Insulated escutcheons are moulded plastic with ¼ turn screws to prevent any possibility of accidental shorting or shock.



RotaDIN® rotatable and removable DIN rail allows greater visibility to termination switchgear, enabling safe termination of cables and better inspection capabilities.



Cable entry with a ratchet sliding mechanism to close off the aperture in compliance with AS/NZS 3000.



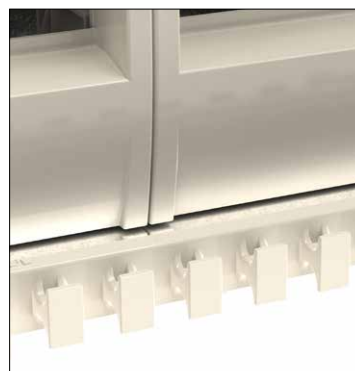
Gravity catch is designed to create a positive closing position and the handle remains flush with the door, eliminating any snag points.



Bevelled door and double fold edges resists twisting and makes for safer handling. The safety door edge will not cut hands or cables.



Covered labelling section provides a consistent position for clear circuit identification labels. The protective clear cover prevents any labels peeling or falling off.



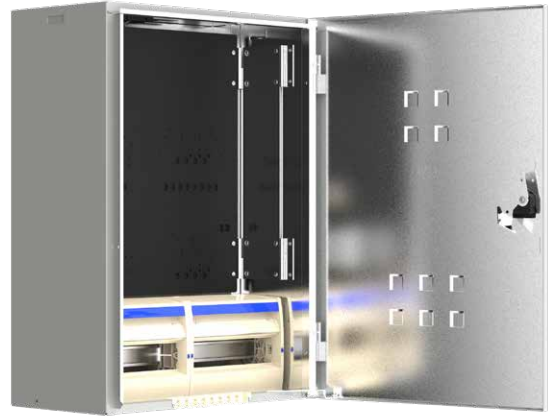
Safety cord retainer is a unique feature of the Horizon enclosures designed for easy retention of extension cords to AS/NZS 3012.

## Horizon Q Series

Residential metering enclosures for QLD applications



- Designed for both single and multi-phase installations.
- AS/NZS 3012 compliant for construction sites as standard.
- Region D wind rated to AS1170.2-2002: Structural design actions – Wind actions.
- Provide safety, quality and performance.
- Suitable for domestic and light commercial metering applications.
- Self-closing gravity catch.
- Top cable entry has ratchet aperture shut-off slide.
- RotaDIN® rotating / removable DIN section.
- Cord retainer for easy retention of extension cords.
- Circuit identification label area with protective cover.
- Weatherproof installation label for AS/NZS3000 compliance.
- External frame mounting brackets.
- Manufactured from 1.0mm galvanised steel or 316 stainless steel.
- Powdercoated Light Grey RAL7035 or N4 surface finish.



Q20

### ORDERING GUIDE

Part Number	DIN	Inclusions			Dimensions (mm)			Panel (mm)		
		Meter Isolator Link	Earth & Neutral	ID labels	Height	Width	Depth	Height	Width	Depth Behind
Q12	48-pole		E16P, N32P + studs	•	860	485	278	480	461	75
Q20^	24-pole	•	E9P, N18P + stud	•	690	485	278	480	461	75
Q20/S^	24-pole	•	E9P, N18P + stud	•	690	485	278	480	461	75
Q60*	30-pole		E9P, N18P + stud	•	600	595	300	390	575	100

\* Q60 is approved for use within the Ergon distribution network region, subject to the Electrical Contractor seeking job-specific approval from Ergon or Energex prior to installation

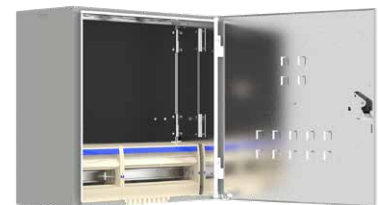
^ Includes meter neutral link fitted to rear of panel



Q12



Q20/S



Q60

### DID YOU KNOW?

The Q60 is purpose-designed for concrete masonry (Besser block) construction, it provides a fit-for-purpose solution for Queensland requirements. B&R continues to work with Ergon and Energex to achieve broader automatic approval to streamline project delivery.

# Horizon Q Series

Residential metering enclosures for QLD applications



## ACCESSORIES

Part Number	Product	Description	Q12	Q20	Q20/S
QBP <sup>▲</sup>	Builder's pole	Supplied complete with 50mm capped PVC tube for insertion into slab. Allows metering enclosure to be mounted on site as a temporary power supply for construction work. It is easily removed and reusable.	•	•	•
HZN/ROOF	Roof - Galvanised Steel RAL7035	For use in exposed weather applications	•	•	
HZN/ROOF/S <sup>▲</sup>	Roof - Stainless Steel				•
HZN/PLINTH	Plinth - Galvanised Steel RAL7035	Designed to mate under a standard meter box. Plinth dimension: 690Hx485Wx240D Compliant to region C wind load according to AS/ NZS1170.2	•	•	
HZN/PLINTH/S <sup>▲</sup>	Plinth - Stainless Steel				•
HZN/FK8	Flush kit	For flush mounting		•	•

▲ Available on request.



HZN/ROOF



HZN/PLINTH



QBP

# Horizon Q20 Pre-Wired

Residential metering enclosures for QLD applications



- Designed for both single and three-phase installations.
- 3.75m main earth tail
- Meter neutral pre-wired
- Comes standard pre-wired with a 63A Schneider main switch
- AS/NZS 3012 compliant for construction sites as standard.
- Suitable for domestic and light commercial metering applications.
- Self closing gravity catch.
- Top cable entry has ratchet aperture shut-off slide.
- RotaDIN® rotating / removable DIN section.
- Cord retainer for easy retention of extension cords.
- Circuit identification label area with protective cover.
- Weatherproof installation label for AS/NZS3000 compliance.
- External frame mounting brackets.
- Manufactured from 1.0mm galvanised steel
- Powdercoated Light Grey RAL7035



## ORDERING GUIDE

Part Number	DIN	Dimensions (mm)			Panel (mm)		
		Height	Width	Depth	Height	Width	Depth Behind
Q20/1PCW	24-pole	690	485	278	480	461	75
Q20/3PCW	24-pole	690	485	278	480	461	75

Includes meter neutral link fitted to rear of panel

## ACCESSORIES

Part Number	Product	Description	Q20/1PCW	Q20/3PCW
QBP <sup>▲</sup>	Builder's pole	Supplied complete with 50mm capped PVC tube for insertion into slab. Allows metering enclosure to be mounted on site as a temporary power supply for construction work. It is easily removed and reusable.	•	•
HZN/ROOF	Roof - Galvanised Steel RAL7035	For use in exposed weather applications	•	•
HZN/PLINTH	Plinth - Galvanised Steel RAL7035	Designed to mate under a standard meter box. Plinth dimension: 690Hx485Wx240D Compliant to region C wind load according to AS/NZS1170.2	•	•
HZN/FK8	Flush kit	For flush mounting	•	•

▲ Available on request.



# Queensland Series

Residential metering enclosures for QLD applications



- Designed for both single and multi-phase installations.
- Durable enclosure suitable for domestic and light metering installations.
- Slide and lift off escutcheon.
- Concealed lift off hinges.
- Underground service location label.
- Double return flat face gutter.
- Manufactured from 1.0mm galvanised steel to Z275.
- Powdercoated Light Grey RAL7035 (excl. NQ/DIN)



BR1M/ECB

## ORDERING GUIDE

Part Number	DIN space	Inclusions			Dimensions (mm)			Panel (mm)		
		RCCB Link#	Busbar	ID labels	Height	Width	Depth	Height	Width	Depth Behind
BR1M/ECB	22-pole	•	•	•	685	485	275	480	461	75
BR3M*					600	620	275	566	600	75
BR3M/ECB	24-pole	•	•	•	770	620	275	566	600	75

\* For remote load centre installations

# RCCB Links provide RCD expansion to 3 circuits

## ACCESSORIES

Part Number	Description	BR1M/ECB	BR3M*	BR3M/ECB
		QNPLK	Padlocking kit to suit QLD series enclosures	•



BR3M

# Queensland Brackets & Accessories

Accessories for QLD metering enclosures



- Suitable for use on all single phase QLD domestic and commercial overhead mains installations.
- Used as a point of attachment for above ground service mains to the premises.
- Designed and tested to QLD supply authority rules & regulations.
- 1.0kN strength rating
- Tested to meet ECMM requirements.
- Manufactured from hot dipped galvanised steel to AS/NZS 4680.



## ORDERING GUIDE - RAISER BRACKETS

Part Number	Product	Size (mm)
2F	Fascia mounting	600
3F		900
4F		1200
RBSK	Raiser bracket stay kit	-
QSPK360	Qld side pull kit 360°	-



2F Fascia Mounting



QSPK360

## ORDERING GUIDE - MAINS CONNECTION ENCLOSURES

Part Number	Product	Dimensions (mm)				Usable Depth*	Weight (kg)
		Height	Width	Depth	Cover Depth		
PM3627	Polynova PM	360	270	165	40	140	2.6
PM5436	IP65 enclosure	540	360	165	40	140	5.0

\* Includes cover depth

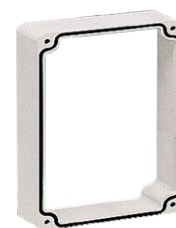
## ORDERING GUIDE - ACCESSORIES

Spacer required for compliance.

Part Number	Product	PM3627	PM5436
PM3627/S	Depth spacer (non-metallic)	•	
PM5436/S			•



Polynova PM



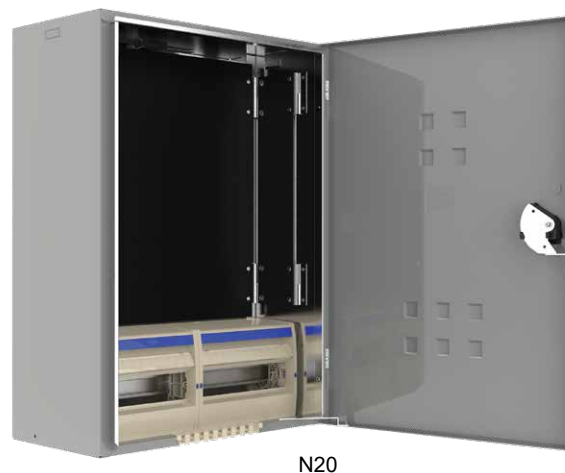
Polynova PM depth spacer

# Horizon N Series

Residential metering enclosures for NSW applications



- Designed for both single and multi-phase installations.
- AS/NZS3012 compliant for construction sites as standard.
- Region D wind rated to AS1170.2-2002: Structural design actions – Wind actions.
- Provide safety, quality and performance.
- Suitable for domestic and light commercial metering applications.
- Self-closing gravity catch.
- Top cable entry has ratchet aperture shut-off slide.
- RotaDIN® rotating / removable DIN section.
- Cord retainer for easy retention of extension cords.
- Circuit identification label area with protective cover.
- Weatherproof installation label for AS/NZS3000 compliance.
- Padlockable facility.
- External frame mounting brackets.
- Manufactured from 1.0 galvanised steel or 316 stainless steel.
- Powdercoated Light Grey RAL7035 or N4.



N20

## ORDERING GUIDE

Part Number	DIN space	Earth & Neutral Link	Dimensions (mm)			Panel (mm)		
			Height	Width	Depth	Height	Width	Depth Behind
N20*	24-pole	E9P, N18P + stud	690	485	278	480	461	75
N20/S <sup>1</sup>	24-pole	E9P, N18P + stud	690	485	278	480	461	75
N22*	48-pole	E9P, N18P + stud	860	485	278	480	461	75

<sup>1</sup> Available on request.

\* Comes with pre-drilled panel for single or 3Ø metering

## ACCESSORIES

Part Number	Product	Description	N20	N20/S	N22
HZN/ROOF	Roof - Galvanised Steel RAL7035	For use in exposed weather conditions	•		•
HZN/ROOF/S <sup>▲</sup>	Roof - Stainless Steel			•	
HZN/PLINTH	Plinth - Galvanised Steel RAL7035	Designed to mate under a standard meter box. Plinth dimension: 690Hx485Wx240D Compliant to region C wind load according to AS/ NZS1170.2	•		•
HZN/PLINTH/S <sup>▲</sup>	Plinth - Stainless Steel			•	
HZN/FK8	Flush Kit	Flush kit	•		

▲ Available on request.



N20/S



HZN/PLINTH



HZN/ROOF

## New South Wales Series

Residential metering enclosures for NSW applications



- Designed for both single and multi-phase installations.
- Suitable for domestic and light commercial installations.
- Provides versatility with a large range of products and accessories.
- Top hinged door and side hinged panel.
- NSW/DIN has 18 pole MCB DIN section cut into panel.
- Earth and neutral links **NOT** included (see links section for options).
- Manufactured from 1.0mm / 1.2mm galvanised steel to Z275.



NSW/BP/GD10

### ORDERING GUIDE

Part Number	Description	DIN space	Dimensions (mm)			Hinged Panel 560h x 575w	
			Height	Width	Depth	Type included	Depth Behind (mm)
NSW/U/13	Enclosure only	–	600	600	330	–	150
NSW/BP/GD10	Featured enclosure	12-pole	600	600	270	Plain black panel	75
NSW/BD/GD10		12-pole	600	600	270	Pre-drilled black panel 5 meters	75

### ACCESSORIES

Product Number	Product	Description	NSW/U/13	NSW/BD/GD10	NSW/BP/GD10
NSW/HBD	Drilled hinged black panel	560mm high x 575mm wide		•	•
NSW/HBP	Hinged plain black panel	560mm high x 575mm wide	•		
NSW/FK	Flange kit			•	•



NSW/HBD

## New South Wales MD Series

Residential metering enclosures for NSW applications



- Designed for both single and multi-phase installations.
- Suitable for domestic and light commercial installations.
- Slide and lift off escutcheons.
- Concealed lift off hinges.
- Double return flat face gutter.
- Manufactured from 1.0mm galvanised steel to Z275.

Comes standard with:

- Earth and neutral bars (RCCB links included)



MD062402

### ORDERING GUIDE

Part Number	DIN space	Dimensions (mm)			Panel (mm)		
		Height	Width	Depth	Height	Width	Depth Behind
MD062402	24-pole	770	620	275	566	600	75

### ACCESSORIES

Part Number	Product	Description
N09	Incoming service brackets	Pole bracket
N10		House bracket



N09 Pole Bracket



N10 House Bracket

# Horizon V Series

Residential metering enclosures for VIC applications



- VSIR Approval #SIR140615B
- Designed for both single and multi-phase installations.
- AS/NZS 3012 compliant for construction sites as standard.
- Region D wind rated to AS1170.2-2002: Structural design actions – Wind actions.
- Suitable for domestic and light commercial metering applications.
- Self-closing gravity catch.
- Top cable entry has ratchet aperture shut-off slide.
- RotaDIN® rotating / removable DIN section.
- Cord retainer for easy retention of extension cords.
- Circuit identification label area with protective cover.
- Weatherproof installation label for AS/NZS3000 compliance.
- Padlockable facility.
- External frame mounting brackets.
- Manufactured from 1.0 galvanised steel or 316 stainless steel.
- Powdercoated Light Grey RAL7035 or N4 surface finish.



V12

## ORDERING GUIDE

Part Number	DIN space	Inclusions		Dimensions (mm)			Panel (mm)		
		Neutral link	Service fuse	Height	Width	Depth	Height	Width	Depth Behind
V5 <sup>^</sup>	20-pole	•	•	430	485	277	380	400	75
V10	24-pole	N18P + stud	•	690	485	278	380	400	75
V10/S	24-pole	N18P + stud	•	690	485	278	380	400	75
V11*				430	485	278	380	400	75
V11/2*			•	430	485	278	380	400	75
V12	48-pole	2 x N18P + stud	•	860	485	278	380	400	75

\* For remote load centre applications

<sup>^</sup> Single phase meters only

## ACCESSORIES

Part Number	Product	Description	V5	V10	V10/S	V11	V11/2	V12
U/GBP	Builder's pole	Underground	•	•	•			•
U/GBPS	Pole support	Temporary, head only	•	•	•	•	•	•
HZN/FK8	Flush kit	For flush mounting		•	•			
CLV001	Lock	Coin lock	•	•	•	•	•	•
HZN/ROOF	Roof - Galvanised Steel RAL7035	For use in exposed weather applications	•	•		•	•	•
HZN/ROOF/S <sup>▲</sup>	Roof - Stainless Steel				•			
HZN/PLINTH	Plinth - Galvanised Steel RAL7035	Designed to mate under a standard meter box. Plinth dimension: 690Hx485Wx240D Compliant to region C wind load according to AS/NZS1170.2		•		•	•	•
HZN/PLINTH/S <sup>▲</sup>	Plinth - Stainless Steel					•		

<sup>▲</sup> Available on request.

# Victoria MD Series

Residential metering enclosures & frames for VIC applications



- Designed for both single and multi-phase installations.
- Suitable for domestic and light commercial installations.
- VSIIR approval number #SIR9640597B
- Suits bottom connected meters.
- No sharp edges.
- Improved strength.
- Manufactured from 1.0mm galvanised steel to Z275
- Powdercoated Light Grey RAL7035.



MD064201

## ORDERING GUIDE

Part Number	DIN space	Dimensions (mm)			Panel (mm)		
		Height	Width	Depth	Height	Width	Depth Behind
MD042104*	21-pole	851	485	275	590	400	75
MD042106*	21-pole	851	485	350	590	400	150
MD043601*	36-pole	1032	485	350	590	400	150
MD0605		675	630	335	600	600	150
MD064201	42-pole	1085	630	335	600	600	150

\* Can be fitted to standard U/GBP Builders Pole.

## ORDERING GUIDE – FRAMES

Part Number	Inclusions				Dimensions (mm)			Panel (mm)		
	Back	Hinged panel	Service fuse	Meter link	Height	Width	Depth	Height	Width	Depth Behind
MD0403F		•	•	•	600	410	160	590	400	150
MF012B					620	620	150			
MD0102F	•	•			375	215	107	370	205	75
MD0201F		•			383	410	107	380	400	75

## ACCESSORIES

Part Number	Product	Description	MD042104*	MD042106*	MD043601*	MD0403F	MF012B	MD0102F	MD0201F
U/GBP	Builder's pole	Underground	•	•	•				
MD0201Y		To suit 410mm wide frame							•
MD0403Y	Metal back	To suit 410mm wide frame				•			
MF011Y		To suit 610mm wide frame					•		
MG003P	Plain panel – left hinged	610mm x 610mm					•		
MG004P	Plain panel – right hinged	610mm x 610mm					•		
MD0301P	Plain Panel	590mm high x 400mm wide	•	•	•	•			

# Victoria CT Series

Residential metering enclosures & frames for VIC applications



- Suitable for installations that require the use of CT metering above 100A.

## Enclosures

- Manufactured from 1.0 / 1.2mm galvanised steel to Z275.
- Powdercoated Light Grey RAL7035.

## Frames

- Manufactured from 1.2 / 1.6mm galvanised steel to Z275.
- Powdercoated Light Grey RAL7035.



MD0605/CT

## ORDERING GUIDE

Part Number	Description	Dimensions (mm)			Panel (mm)		
		Height	Width	Depth	Height	Width	Depth Behind
MD0605/CT	Enclosure with CT drilled panel	675	630	335	600	600	150
MF012B	Metering frames without back (no panel supplied)	620	620	150	–	–	150
MF062B		930	620	150	–	–	150

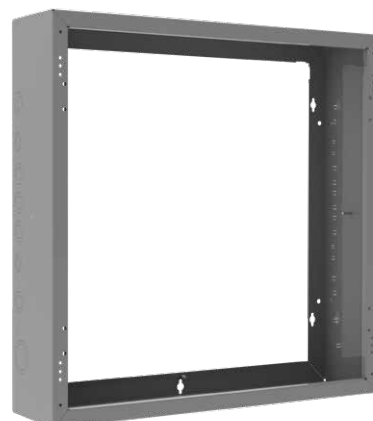
## ACCESSORIES

Part Number	Product	Hinge Orientation		Dimensions (mm)			Panel Type	MD0605/CT	MF012B	MF062B
		Left	Right	Height	Width	Panel Type				
MG003P	Metering Panels	•		610	610	Plain black		•		
MG004P			•	610	610	Plain black		•		
MG019P		•		910	610	Plain black			•	
MG020P <sup>▲</sup>		•		910	610	Plain black			•	
MG022P			•		610	610	Black drilled for VIC CTs		•	
MG024P		•		610	610	Black drilled for VIC CTs			•	
MF011Y	Back Panel			620	620	To suit metering frames		•		
MF061Y				930	620	To suit metering frames			•	

▲ Available on request.



MG004P



MF012B

# Victoria Brackets & Accessories

Accessories for VIC metering enclosures



- Suitable for use on all VIC domestic and commercial overhead mains installations.
- Used as a point of attachment for above ground service mains to the premises.
- Designed and tested to VIC supply authority rules & regulations.
- VSIR approval number #VSIR990705R
- 1.0kN single phase or 2.0kN multi-phase strength rating
- Tested to meet SIR requirements.
- Manufactured from hot dipped galvanised steel to AS/NZS 4680.



N01V

## ORDERING GUIDE - RAISER BRACKETS

Part Number	Product	Type	Size (mm)
N01V	Single phase (1kN)	For rafter mounting	600
N02V			900
N06V		For fascia mounting	900
N03/3V	Multi phase bracket (2kN)	For rafter mounting	900
N06/3V		For fascia mounting	900
RBSKV	Raiser bracket stay kit	For raiser bracket retention	–

## ORDERING GUIDE - INCOMING SERVICE BRACKETS

Part Number	Product	Type
N08	Marshall bracket	1 phase angled
N12		3 phase angled
N09	General purpose brackets	Pole bracket
N10		House bracket
N11		Rafter bracket
N13		Stand off pole bracket
N14		Ceiling fan mounting bracket
N15	Pole bracket	3 phase
N16		1 phase

## ORDERING GUIDE - GENERAL ACCESSORIES

Part Number	Description
SFPLK1NL	Service fuse padlock kit to suit 1 fuse, no lock
SFPLK3NL	Service fuse padlock kit to suit to suit 3 fuses, no lock



SFPLK1NL

# Victoria Brackets & Accessories

Accessories for VIC metering enclosures



N02V



N06V



N03/3V



N06/3V



N08



N12



N09



N10



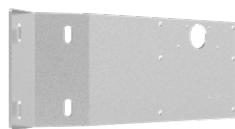
N11



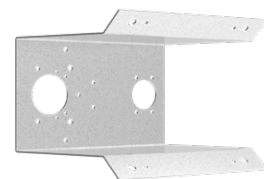
N13



N14



N15



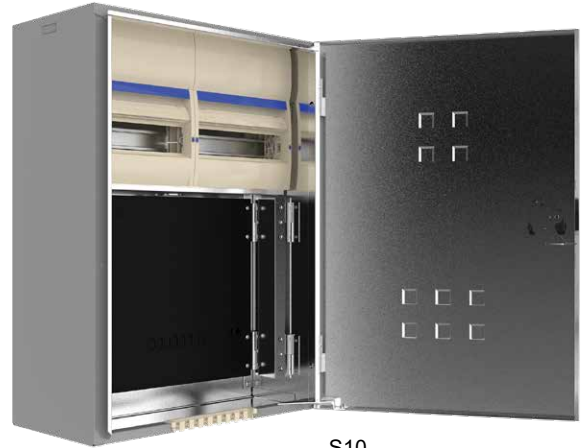
N16

## Horizon S Series

Residential metering enclosures for SA applications



- Designed for both single and multi-phase installations.
- AS/NZS 3012 compliant for construction sites as standard.
- Region D wind rated to AS1170.2-2002: Structural design actions – Wind actions.
- Provides safety, quality and performance.
- Suitable for domestic and light commercial metering applications.
- Self-closing gravity catch.
- Top cable entry has ratchet aperture shut-off slide.
- RotaDIN® rotating / removable DIN section.
- Cord retainer for easy retention of extension cords.
- Circuit identification label area with protective cover.
- Weatherproof installation label for AS/NZS3000 compliance.
- Padlockable facility.
- External frame mounting brackets
- To suit type 1 and type 2 meter panel.
- Manufactured from 1.0 galvanised steel or 316 stainless steel.
- Powdercoated Light Grey RAL7035 or N4 surface finish.



S10

### ORDERING GUIDE

Part Number	DIN space	Inclusions			Dimensions (mm)			Panel (mm)		
		MCB	Lock off	Meter Neutral Link	Height	Width	Depth	Height	Width	Depth Behind
S10	24-pole	63A	•	•	690	485	278	350	365	75
S10/S	24-pole	63A	•	•	690	485	278	350	365	75
S20	24-pole	63A	•	•	860	485	278	590	365	75

### ORDERING GUIDE – COMBINED SERVICES

Part Number	DIN space	Enclosures		Inclusions			Dimensions (mm)			Panel (mm)		
		S10	HZN/COM1 <sup>^</sup>	Meter Isolator	Panel	Metal pan	Height	Width	Depth	Height	Width	Depth Behind
S82*	24-pole	•	•	•	Type 1	•	1120	485	278	350	365	75

\* Electrical and Communications.

<sup>^</sup> For more information on the S10 enclosures see table above. For more information on the HZN/COM1 enclosures see page 11.

## Horizon S Series

Residential metering enclosures for SA applications

### ACCESSORIES

Part Number	Product	Description	S10	S10/S	S20	S82
HZN/PLINTH	Plinth - Galvanized Steel RAL7035	Designed to mate under a standard meter box. Plinth dimension: 690Hx485Wx240D	•		•	
HZN/PLINTH/S <sup>▲</sup>	Plinth - Stainless Steel	Compliant to region C wind load according to AS/ NZS1170.2		•		
HZN/ROOF	Roof - Galvanized Steel RAL7035		•		•	
		For use in exposed weather applications				
HZN/ROOF/S <sup>▲</sup>	Roof - Stainless Steel			•		
CL	Lock	Coin lock (supplied with 2 keys, SAPN master key "series 97000")	•	•	•	•
HZN/FK8	Flush kit	For flush mounting	•			
S20/3TKIT	Conversion Kit	Converts the S20 up to 3 tenancies			•	

▲ Available on request.



S10/S



S20

# South Australia Rebated Sides Enclosures

Rebated sides metering enclosures for SA applications



- Designed for both single and multi-phase installations.
- Suitable for domestic and light commercial installations.
- Standard SA rebate to allow enclosure to be recessed into the wall easily.
- Provision to fit ES coin lock (CL) to door of the enclosure (lock not included).
- Includes neutral links and earth.
- Earthing provision: M8 bolt welded to the body on a standoff
- Manufactured from 1.0mm galvanised steel to Z275.
- Powdercoated Light Grey RAL7035.



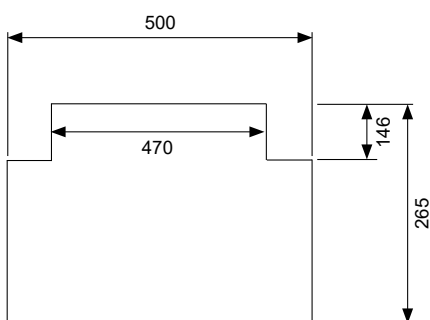
## ORDERING GUIDE

Part Number	To suit metering	DIN	Inclusions			Dimensions (mm)			Panel (mm)		
			Meter isolator	Meter neutral link	Provision for additional earth & neutral link kit	Height	Width	Depth	Height	Width	Depth Behind
1DIN24R	Type 1	24-pole	63Amp	•		600	470	265	350	365	75

## ACCESSORIES

Part Number	Description
CL	Coin Lock - Supplied with 2 keys, SAPN master key "series 97000"

## TECHNICAL DRAWINGS



Rebate dimensions

# South Australia Straight Sides Enclosures

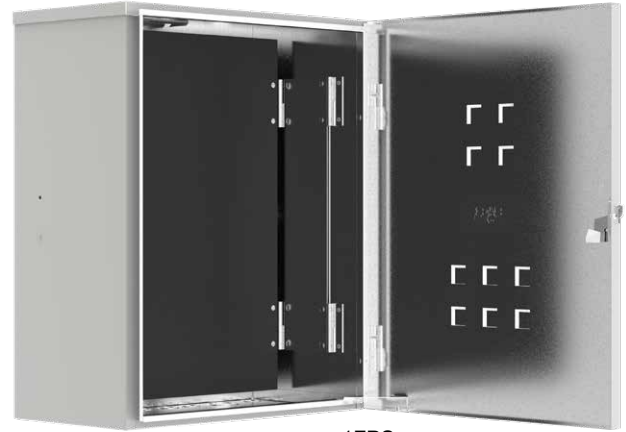
Straight sides metering enclosures for SA applications



- Designed for both single and multi-phase installations.
- Suitable for domestic and light commercial installations.
- Standard SA rebate to allow enclosure to be recessed into the wall easily.
- Provision to fit ES coin lock to door of the enclosure.
- Manufactured from 1.0mm galvanised steel to Z275.
- Powdercoated Light Grey RAL7035.

Comes standard with:

- Earth and neutral links
- Meter neutral links



1FPS

## ORDERING GUIDE

Part Number	To suit metering	Dimensions (mm)			Panel (mm)		
		Height	Width	Depth	Height	Width	Depth Behind
1FPS	Type 1 & 2	600	485	265	550	430	75

# South Australia Brackets & Accessories

Residential metering accessories for SA enclosures



- Suitable for use on all SA domestic and commercial overhead mains installations.
- Used as a point of attachment for above ground service mains to the premises.
- Designed and tested to SA supply authority rules & regulations.
- 0.9kN single phase strength rating.
- Manufactured from hot dipped galvanised steel to AS/NZS4680.

## ORDERING GUIDE

Part Number	Product	Description	Size (mm)
RB01/3*	Single phase	Under fascia mounting	1100

\*convertible to 3 phase using RB/AP3



RB01/3 with  
RB/AP3 attached

## ACCESSORIES

Part Number	Product
EB	Earth connection box 150Hx130Wx75D (mm)
RBSK	Kit raiser bracket stay
RB/AP3	3 phase adapter plate to convert RB01/3 to multi phase



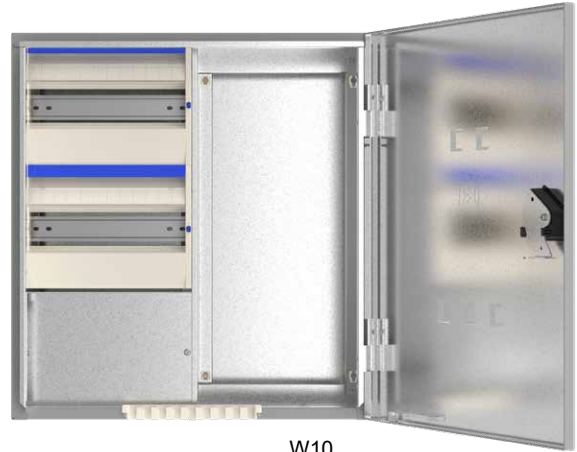
EB

# Horizon W Series

Residential metering enclosures for WA applications



- Designed for both single and multi-phase installations.
- AS/NZS 3012 compliant for construction sites as standard.
- Region D wind rated to AS1170.2-2002: Structural design actions – Wind actions.
- Provides safety, quality and performance.
- Suitable for domestic and light commercial metering applications.
- Self-closing gravity catch.
- RotaDIN® rotating / removable DIN section.
- Cord retainer for easy retention of extension cords.
- Circuit identification label area with protective cover.
- Weatherproof installation label for AS/NZS3000 compliance.
- Padlockable facility.
- External frame mounting brackets.
- Manufactured from 1.0mm galvanised steel or 316 stainless steel.
- Powdercoated Light Grey RAL7035 or N4 surface finish.



W10

## ORDERING GUIDE

Part Number	DIN space	Dimensions (mm)		
		Height	Width	Depth
W10	24-pole	520	485	278
W10/S▲	24-pole	520	485	278

Enclosures exclude meter panel. See BMP0402/06  
 ▲ Available on request.

## ACCESSORIES

Part Number	Product	Description	W10	W10/S
BMP450450/06	Insulated panel	Pre-Cut Insulating Panel 6mm thick (panel can be used for other metering enclosures and custom switchboards) 450mmH x 450mmW		
BMP0402/06	Insulated panels	6mm thick 450mmH x 225mmW	•	•
HZN/ROOF	Roof - Galvanised Steel RAL7035	For use in exposed weather applications 485mmW	•	
HZN/ROOF/S▲	Roof - Stainless Steel			•
HZN/PLINTH	Plinth - Galvanised Steel RAL7035	Designed to mate under a standard meter box. Plinth dimension: 690Hx485Wx240D Compliant to region C wind load according to AS/NZS1170.2	•	
HZN/PLINTH/S▲	Plinth - Stainless Steel			•

▲ Available on request.



HZN/ROOF



HZN/PLINTH



BMP0402/06

# Horizon T Series

Residential metering enclosures for TAS applications



- Designed for single or multi-phase direct connect metering installations.
- Complies and exceeds both TAS and Australian Supply Authority requirements.
- Region D wind rated to AS1170.2-2002: Structural design actions – Wind actions.
- Designed with robust and durable quality while providing safety and performance.
- Suitable for residential and light commercial metering applications.
- The RotaDIN® removable DIN rail allows for easy installation.
- Ratchet sliding cable entry shut-off to Wiring Rule requirements.
- AS/NZS 3012 compliant with built-in cord retainer.
- Identification and covered labelling sections.
- Padlock facilities.
- Manufactured from 1.0mm galvanised steel to Z275 or 316 stainless steel.



T20B

## ORDERING GUIDE

Part Number	DIN Space	Dimensions (mm)			Panel (mm)			Material & Finish
		Height	Width	Depth	Height	Width	Depth Behind	
T20B	24-pole	688	485	278	350	365	75	Galvanised Steel RAL7035
T20B/S▲	24-pole	688	485	278	350	365	75	Stainless Steel N4 Finish
T22	36-pole	860	485	278	380	400	75	Galvanised Steel RAL7035
T9/PKIT	4.5-pole	-	-	-	300	350	-	-

▲ Available on request.

## ACCESSORIES

Part Number	Product	Description	T20B	T20B/S	T22
HZN/FK8	Flush Kit	Flush mounting kit	•	•	
CLV001	Lock	Coin lock	•	•	•
HZN/ROOF	Roof - Galvanised Steel RAL7035	Rainhood for weather protection	•		•
HZN/ROOF/S▲	Roof - Stainless Steel			•	
HZN/PLINTH	Plinth - Galvanised Steel RAL7035	Designed to mate under a standard meter box. Plinth dimension: 690Hx485Wx240D Compliant to region C wind load according to AS/NZS1170.2	•		•
HZN/PLINTH/S▲	Plinth - Stainless Steel			•	

▲ Available on request.

# Horizon T25P

Residential metering enclosures for TAS applications



- Suitable for domestic and light commercial metering applications.
- Designed as a main switchboard with:
  - Authority compliant panel for dual NMI multi-phase installations.
  - MEN Earth and Neutral bars provided.
  - Sealable authority supply capacity control zones and
  - Consumer zone to feed individual sub-mains
- AS/NZS 3012 compliant for construction sites as standard.
- Cord retainer for easy retention of extension cords.
- Ability to be mounted into property boundary fences.
- Provides for both top and bottom cable entry.
- Provides safety, quality and performance.
- Dual CL001 keylocks for added security including standard self-closing gravity catch.
- Top cable entry has ratchet aperture shut-off slide.
- Circuit identification label area with protective cover.
- Weatherproof installation label for AS/NZS3000 compliance.
- Region D wind rated to AS1170.2-2002: Structural design actions – Wind actions.
- Manufactured from galvanised steel
- Powdercoated Light Grey RAL7035.



T25P

## ORDERING GUIDE

Part Number	DIN Space	Dimensions (mm)			Panel (mm)		
		Height	Width	Depth	Height	Width	Depth Behind
T25P	9 + 12-pole	860	485	278	590	365	75

## ACCESSORIES

Part Number	Product	Description
HZN/FK8	Flush Kit	Flush mounting kit
HZN/ROOF	Roof - Galvanised Steel RAL7035	Rainhood for weather protection
HZN/PLINTH	Plinth - Galvanised Steel RAL7035	Designed to mate under a standard meter box. Plinth dimension: 690Hx485Wx240D Compliant to region C wind load according to AS/NZS1170.2



HZN/PLINTH



HZN/ROOF

# Horizon D Series

Residential metering enclosures for NT applications



- Designed for both single and multi-phase installations.
- AS/NZS 3012 compliant for construction sites as standard.
- Region D wind rated to AS1170.2-2002: Structural design actions – Wind actions.
- Provide safety, quality and performance.
- Suitable for domestic and light commercial metering applications.
- Top cable entry has ratchet aperture shut-off slide.
- RotaDIN® rotating / removable DIN section.
- Cord retainer for easy retention of extension cords.
- Circuit identification label area with protective cover.
- Weatherproof installation label for AS/NZS3000 compliance.
- Padlockable facility.
- External frame mounting brackets.
- Manufactured from 1.0mm galvanised steel.
- Powdercoated Light Grey RAL7035.



D10

## ORDERING GUIDE

Part Number	DIN space	MCB	Dimensions (mm)			Panel (mm)		
			Height	Width	Depth	Height	Width	Depth Behind
D10*	18-pole	63A	600	400	300	390	385	75
D20	24-pole		688	485	278	480	461	75
NT/DIN^	18-pole		600	600	270	575	560	75

\* Sized for block construction work.

^ Meter panel does not have holes pre-drilled.

## ACCESSORIES

Part Number	Product	Description
HZN/ROOF	Roof - Galvanised Steel RAL7035	For use in exposed weather applications for D20 only
HZN/PLINTH	Plinth - Galvanised Steel RAL7035	Designed to mate under a standard meter box. for D20 only Plinth dimension: 690Hx485Wx240D Compliant to region C wind load according to AS/NZS1170.2
HZN/FK8	Flush Kit	For flush mounting



D20



HZN/PLINTH



HZN/ROOF

# Northern Territory Brackets & Accessories

Accessories for NT metering enclosures



- Suitable for use on all NT domestic and commercial overhead mains installations.
- Used as a point of attachment for above ground service mains to the premises.
- Designed and tested to NT supply authority rules & regulations.
- 1.0kN single phase strength rating.
- Tested to meet ECMM requirements.
- Manufactured from hot dipped galvanised steel to AS/NZS4680.



## ORDERING GUIDE - RAISER BRACKETS

Part Number	Product	Description	Size (mm)
2F	Single phase	For fascia mounting	600
3F			900
3NQF*			900
3UF/59	General purpose brackets	For under fascia mounting	900
N09		Pole bracket	–
N10		House bracket	–

\* While stocks last

## ORDERING GUIDE - GENERAL ACCESSORIES

Part Number	Product	Dimensions (mm)		
		Height	Width	Depth
EB	Earth connection box	150	130	75



N09



N10



2F



3NQF



EB

# Hinged Switchboard Frames

Internal use general purpose frames



- Suitable for use in internal and switchroom applications.
- Effective solution for general purpose metering requirements.
- Black panel.
- Manufactured from 1.0mm / 1.6mm galvanised steel to Z275 specification.
- Powdercoated Light Grey RAL7035.



SF1208/NB

## ORDERING GUIDE

Part Number	Description	Dimensions (mm)			Panel (mm)		
		Height	Width	Depth	Height	Width	Depth Behind
SF1208/NB <sup>▲</sup>	Without Back	306	213	102	302	203	100
SF1212/NB		306	311	102	302	303	100
SF1414/NB		358	355	102	355	355	100
SF1614/NB		410	355	102	406	355	100
SF1812/NB		461	303	102	457	303	100
SF1818/NB		461	457	102	457	457	100
SF2418/NB		618	457	102	610	457	100
SF2424/NB		618	610	102	610	610	100
SF2424/NB/6		618	610	152	610	610	150
SF1208		With Back	306	213	102	302	203
SF1212	306		311	102	302	303	100
SF1414	358		365	102	355	355	100
SF1614 <sup>▲</sup>	410		365	102	406	355	100
SF1812 <sup>▲</sup>	461		311	102	457	303	100
SF1818	461		466	102	457	457	100
SF2418	618		466	102	610	457	100
SF2424	618		613	102	610	610	100
SF2424/6	618		613	151	610	610	150

▲ Available on request.

# CT Metering

Small main boards & CT chassis systems



- Suitable for the mounting of supply authority and private current transformers.
- Manufactured from 1.6mm zinc coated steel or 316 stainless steel available on request.
- Powdercoated Pebble Grey RAL7032.
- AS/NZS 61439 compliant documentation provided.



SMB1/15

## ORDERING GUIDE

Part Number	Description	Switchboard Max Rating	Type Test Certification	Dimensions (mm)		
				Height	Width	Depth
<b>SMB ENCLOSURES IP66</b>						
SMB1/15	Cabinet supplied with meter and consumer panel (ex VIC)	490A	36kA for 1 sec	2075	800	500
SMB1/15/S	Cabinet supplied with meter and consumer panel (ex VIC)	490A	36kA for 1 sec	2075	800	500
<b>CT ENCLOSURES IP23</b>						
CTB/E2	Enclosure is weather proof to IP23 and includes potential fuse holders and 32A fuse cartridges. Excludes CT chassis to be ordered separately. Suitable for either CTC200/400A or CTC630A. Painted RAL7035 Light Grey.			500	720	340
<b>CT CHASSIS</b>						
CTC200/400A <sup>^</sup>	CT chassis for S-Type CTs	200/400A	25kA for 1 sec	500	400	95
CTC630A <sup>^</sup>	CT chassis for T-Type CTs	630A	36kA for 1 sec	500	400	120

<sup>^</sup> Type test certificates available on request.

## ACCESSORIES

Part Number	Description	CTB/E2
CTPFK	Potential fuse kit with cover for sealing and insulating base-plate (excludes fuses).	•
LKDCT10016	QLD Meter Isolation Link, with link, clear	
LKDVA10000	Authority CT Metering Block, with Z links	
LKDVA10001	Authority CT 200/5 Extended Range, S-type, each	
LKDVA10002	Authority CT 800/5 Extended Range, T-type, set of 3	
LKDVF10000 <sup>▲</sup>	NSW fuse holder only, 30.2x58mm, w. Barrier	
LKDVF10002	Standard 100A fuse holder only, 22x58mm, clear	



CTPFK



CTB/E2

<sup>▲</sup> Available on request.

# Metal Enclosures

Suitable for general purpose use



- Solution for housing general purpose electrical equipment.
- Suitable for use in power distribution and metering applications.
- Top hinged removable door with door stay.
- Includes double hinged electrical grade blank panel for mounting equipment.
- Manufactured from 1.0mm galvanised steel to Z275 specification.
- Unpainted.



## ORDERING GUIDE

Part Number	Dimensions (mm)			Panel (mm)	
	Height	Width	Depth	Height	Width
TB1208/U	343	230	204	305	203
TB1212/U	343	330	254	305	305
TB1414/U	395	381	254	356	356
TB1614/U	444	381	254	406	356
TB1812/U	495	330	254	457	305
TB1818/U	495	483	254	457	457
TB1818/U/13	495	483	330	457	457
TB2418/U	648	483	254	609	457
TB2424/U	648	635	254	609	609
TB2424/U/13	648	635	330	609	609

# DIN Covers

Plastic cover for DIN control equipment



- Designed for both single and multi-phase installations.
- Simple plastic cover for DIN rail control equipment including MCBs and RCDs.
- Sealing tab on 01, 02 & 04.
- Padlockable meter lock-off device available.
- Cream RAL9001.



LCP12/B

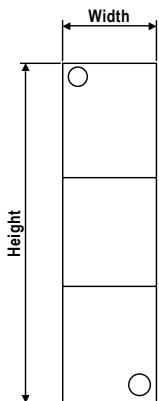
## ORDERING GUIDE

Part Number	Dimensions (mm)			
	Poles	Height	Width	Depth
LCP01	1	155	23	65
LCP02 <sup>▲</sup>	2	155	40	65
LCP04	4	155	82	65
LCP12/B	12	140	250	67

These do not include accessories such as E&N links.

▲ Available on request.

## TECHNICAL DRAWINGS



# DIN Rail Enclosures

Metal loadcentres for DIN control equipment



- Designed for applications that require a robust construction.
- Metal surface and flush mounted enclosures.
- Traffic White RAL9016.

Comes standard with:

- Earth and neutral links
- Standard circuit ID labels
- Hinged cover



LCM18S

## ORDERING GUIDE

Part Number	Product	No. of Rows	Pole	Dimensions (mm)			Escutcheon (mm)		Links (all 16mm <sup>2</sup> )	
				Height	Width	Depth	Height	Width	Earth	Neutral
LCM09S	Surface Mount	1	9	254	254	71	–	–	5	9+4
LCM12S		1	12	254	304	71	–	–	5	14+4
LCM18S		1	18	254	412	71	–	–	7	18+4
LCM24S		2	24	414	364	71	–	–	7	24+4
LCM36S		3	36	604	364	71	–	–	12	36+4
LCM48S		4	48	745	460	71	–	–	12	36+9+4
LCM09F <sup>▲</sup>	Flush Mount	1	9	254	254	62	304	304	5	9+4
LCM12F		1	12	254	304	62	304	354	5	14+4
LCM18F <sup>▲</sup>		1	18	254	412	62	304	462	7	18+4
LCM24F		2	24	414	362	62	464	414	7	24+4
LCM36F		3	36	604	364	62	654	414	12	36+4
LCM48F <sup>▲</sup>		4	48	745	460	62	799	514	12	36+9+4
LCM96S <sup>▲</sup>	Automation	4	96	750	560	166	–	–	72	72
LCM144S <sup>▲</sup>		6	144	970	560	166	–	–	96	96

▲ Available on request.

## ACCESSORIES

Part Number	Product	Hinge	Poles covered	Dimensions (mm)			LCM09S	LCM12S	LCM18S	LCM24S	LCM36S	LCM48S	LCM09F	LCM12F	LCM18F	LCM24F	LCM36F	LCM48F	LCM96S	LCM144S	
				Height	Width	Depth															
LCM09D <sup>▲</sup>	Doors	Top	All	252	252	22	•						•								
LCM12D		Top	All	252	302	22		•						•							
LCM18D		Top	All	252	410	22			•						•						
LCM24D		Right	All	412	362	22				•						•					
LCM36D		Right	All	602	362	22					•							•			
LCM48D		Right	All	747	462	22						•							•		
LCM07C <sup>▲</sup>	Circuit breaker security cover	Top	7.5	110	145	20	•						•								
LCM10C <sup>▲</sup>		Top	10.5	110	198	20		•						•							
LCM16C <sup>▲</sup>		Top	16.5	110	305	20			•						•						
LCMLK	Key lock						•	•	•	•	•	•	•	•	•	•	•	•	•	•	

▲ Available on request.

# Covered Links

Installation accessories for metering enclosures



- Suitable for domestic and commercial metering applications.
- Designed to comply with AS 5112.
- Exceeds AS/NZS 61439 requirements for glow wire testing.
- Generous tunnel sizing for large cables.
- Sealable.
- Various colour covers to identify active conductors.
- Robust polycarb plastic



## ORDERING GUIDE

Part Number			Description	Number of Tunnels	Maximum cable size (mm <sup>2</sup> )	Rated Amps	Range
Clear	Red	Black					
LK5C35	LK5R35	LK5B35	Link 5 Terminals, Max 35mm <sup>2</sup>	5	35	100	Small
LK5C	LK5R <sup>▲</sup>	LK5B <sup>▲</sup>	Link 5 Terminals	5	16	100	Small
LK6C35 <sup>▲</sup>	LK6R35 <sup>▲</sup>	LK6B35 <sup>▲</sup>	Link 6 Terminals, Max 35mm <sup>2</sup>	6	35	100	Small
LK7C35	LK7R35 <sup>▲</sup>	LK7B35	Link 7 Terminals, Max 35mm <sup>2</sup>	7	35	100	Small
LK7C	LK7R	LK7B	Link 7 Terminals	7	16	100	Small
LK10C35 <sup>▲</sup>	LK10R35	LK10B35	Link 10 Terminals, Max 35mm <sup>2</sup>	10	35	100	Medium
LK10C	LK10R <sup>▲</sup>	LK10B <sup>▲</sup>	Link 10 Terminals	10	16	100	Medium
LK13C35 <sup>▲</sup>	LK13R35 <sup>▲</sup>	LK13B35	Link 13 Terminals, Max 35mm <sup>2</sup>	13	35	100	Medium
LK18C	LK18R <sup>▲</sup>	LK18B <sup>▲</sup>	Link 18 Terminals	18	16	100	Medium
LKT4C35 <sup>▲</sup>	LKT4R35 <sup>▲</sup>	LKT4B35	Link T Shaped 4 Terminals Max 35mm <sup>2</sup>	4	35	140	T-Shape
LK165A7C70 <sup>▲</sup>	LK165A7R70	LK165A7B70	Link 165A 7 Terminals Max 70mm <sup>2</sup>	7	70	165	165amp
LK165A13C70 <sup>▲</sup>	LK165A13R70 <sup>▲</sup>	LK165A13B70 <sup>▲</sup>	Link 165A 13 Terminals Max 70mm <sup>2</sup>	13	70	165	165amp
-	-	LK100A14TC16 <sup>▲</sup>	Link 100A 3x35mm <sup>2</sup> 11x16mm <sup>2</sup> tunnels	14	35	100	
-	-	LK250A4B35 <sup>▲</sup>	Link 100A 4 Terminals Max 35mm <sup>2</sup>	4	35	100	Vic Link
LK400A7C150	LK400A7R150	LK400A7B150 <sup>▲</sup>	Link 400A 7 Terminals Max 150mm <sup>2</sup>	7	150	400	400amp
LK400A13C150 <sup>▲</sup>	LK400A13R150	LK400A13B150	Link 400A 13 Terminals Max 150mm <sup>2</sup>	13	150	400	400amp

▲ Available on request.

# Uncovered Links

Installation accessories for metering enclosures



- Suitable for domestic and commercial metering applications.
- Designed to comply with AS 5112.
- Generous tunnel sizing for large cables.
- Studs provide lug termination.
- Numbered tunnels.



## ORDERING GUIDE

Part Number	Description	Tunnels	Length	Amps
LKFEET	Pack of 10 link bar support feet	–	–	–
LK90A4 <sup>▲</sup>	Link 90A 4 Tunnels 16mm <sup>2</sup>	4	54.5	90
LK90A6	Link 90A 6 Tunnels 16mm <sup>2</sup>	6	68.0	90
LK90A8	Link 90A 8 Tunnels 16mm <sup>2</sup>	8	81.0	90
LK90A12	Link 90A 12 Tunnels 16mm <sup>2</sup>	12	106.0	90
LK165A12	Link 165A 2 x M10 Studs 12 Tunnels 16mm <sup>2</sup>	12	144.0	165
LK165A18 <sup>▲</sup>	Link 165A 2 x M10 Studs 18 Tunnels 16mm <sup>2</sup>	18	185.0	165
LK165A24 <sup>▲</sup>	Link 165A 2 x M10 Studs 24 Tunnels 16mm <sup>2</sup>	24	227.0	165
LK165A36 <sup>▲</sup>	Link 165A 2 x M10 Studs 36 Tunnels 16mm <sup>2</sup>	36	310.0	165
LK250A12	Link 250A 2 x M8 Studs 12 Tunnels 2x35 / 10x16mm <sup>2</sup>	12	153.0	250
LK250A18 <sup>▲</sup>	Link 250A 2 x M8 Studs 18 Tunnels 2x35 / 16x16mm <sup>2</sup>	18	197.0	250
LK250A24 <sup>▲</sup>	Link 250A 2 x M8 Studs 24 Tunnels 2x35 / 22x16mm <sup>2</sup>	24	238.0	250
LK250A36 <sup>▲</sup>	Link 250A 2 x M8 Studs 18 Tunnels 4x35 / 32x16mm <sup>2</sup>	18	328.0	250

▲ Available on request.

# Installation Accessories

Range of accessories to suit metering enclosures

## Cable Covers

Manufactured from 1.6mm thick hot dipped galvanised steel to AS/NZS4680 standard ensures long-life in harsh Australian environments.

Part Number	Description	Dimensions (mm)		
		Height	Width	Length
CCP050/HD	Pole Mount	50	50	900
CCP075/HD		75	75	900
CCP100/HD		100	100	900
CCP050/HD/15		50	50	1500
CCP075/HD/15		75	75	1500
CCP050/24*		50	50	2400
CCP050/HD/28		50	50	2800
CCP075/HD/28		75	75	2800
CCS020/HD	Surface Mount	20	20	1200
CCS025/HD		25	25	1200
CCS032/HD		32	32	1200
CCS038/HD		38	38	1200
CCS050/HD		50	50	1200
CCS075/HD		75	75	1200
CCS075/HD/15		75	75	1500



▲ Available on request.

## Pole Fillers

Designed to fit most DIN cutouts with a patented technology that makes them stay in requiring a tool for removal. Compliant to Australian Wiring Rules.

Part Number	Modules
PF6TR	6 module width
PF6TR/PK	3 x 6 module width



PF6TR/PK

# Installation Accessories

Range of accessories to suit metering enclosures



## Insulated Panels

Asbestos free, paper phenolic compressed resin insulated electrical grade panels — meets and exceeds Australian standards and 960°C glow wire standards.

Part Number	Description	Dimensions (mm)		
		Height	Width	Thickness
BS06	Full Sheet	914	1218	6
BS08		914	1218	8
BS06/CTS <sup>▲</sup>	Cut To Size	—	—	6
BS08/CTS <sup>▲</sup>		—	—	8
BMP240355/06 <sup>▲</sup>	Pre-Cut Lengths	240	355	6
BMP255355/06		255	355	6
BMP289300/06 <sup>▲</sup>		289	300	6
BMP0303/06		300	300	6
BMP300680/06		300	680	6
BMP355560/06		355	560	6
BMP360595/06		360	595	6
BMP365350/06		365	350	6
BMP450110/06 <sup>▲</sup>		450	110	6
BMP0402/06		450	225	6
BMP450450/06		450	450	6
BMP500300/06 <sup>▲</sup>		500	300	6
BMP575560/06		575	560	6
BMP600600/06		600	600	6
BMP610610/06		610	610	6



BMP450450/06

▲ Available on request.

## Panel Screws

Specially designed hi-lo screws for insulated panels. Supplied in bags of 100.

Part Number	Description
BPS133 <sup>▲</sup>	13 x 3mm
BPS253	25 x 3mm
BPS323 <sup>▲</sup>	32 x 3mm

▲ Available on request.



Panel screws

## Marking Pens

Suitable for marking of black panels.

Part Number	Colour
BMP/W	White



BMP/W

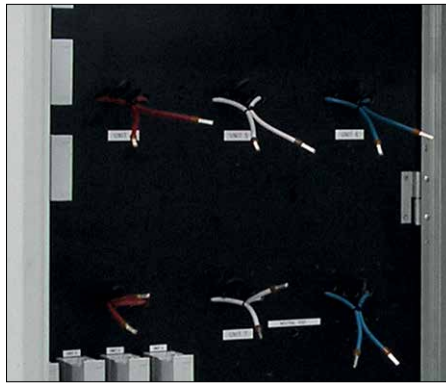
# Pre-Wired Group Metering

The pre-wired group metering enclosures (GMEs) from B&R, provide an easy, off-the-shelf solution for multiple tenancy sites.

These GMEs can be installed free standing using the appropriate plinth and comply with the latest regulations to ensure a seamless installation.



Meter and service fuses – 100A meter and 100A service fuses come supplied, installed and wired within the enclosure.



We will wire it all for you! Pre-wired for single phase metering, ready to install.



Tenancy MCBs come installed and wired in the enclosure.



Supply capacity control – segregated area for provision of supply capacity control if required.



Extra space – additional DIN space is provided across the entire range to cater for individual needs.

Please Note: These features relate to the Victorian pre-wired group metering enclosure.



- Designed for single phase installations.
- Solutions for multiple tenancy installations throughout Victoria.
- Pre-wired, ready to fit meter.
- Ample DIN space.
- Upgradeable to include supply capacity control
- Manufactured from 1.0mm galvanised steel to Z275.
- Powdercoated Light Grey RAL7035.

Comes standard with:

- 40A tenancy sub-main MCBs
- Meter fuse holders
- Service protection device fuse holders



GMPV05

**ORDERING GUIDE**

Part Number	Inclusions			Dimensions (mm)			Panel (mm)			SCCD Option
	Tenancies	Meter Fuses	Tenancy Type	Height	Width	Depth	Height	Width	Depth Behind	
<b>PRE-WIRED</b>										
GMPV04	4 x 40A	4 x SPD's	Single phase	1035	485	335	590	400	150	
GMPV05	5 x 40A	5 x SPD's	Single phase	1085	630	335	600	600	150	•
GMPV07#	7 x 40A	7 x SPD's	Single phase	1200	800	440	900	615	230	•
<b>UNWIRED</b>										
GMUV04*	–	–	Unwired	1035	485	335	590	400	150	–
GMUV05*	–	–	Unwired	1085	630	335	600	600	150	–
GMUV07*	–	–	Unwired	1200	800	440	900	615	230	–

\* Plain panel suitable for single and 3-phase applications.

# Room for 8th meter if required.

**PLINTHS**

Part Number	Height	Width	Depth	GMPV04	GMPV05	GMPV07	GMUV04	GMUV05	GMUV07
GM04P	600	485	350	•			•		
GM05P	500	630	320		•			•	
GM07P	500	800	420			•			•



GMPV04



GM04P



GMUV04

## South Australia Group Metering

Enclosures to suit SA applications



- Designed for both single and multi-phase installations (unwired version up to 2x 3ph meters)
- Pre-wired solutions for up to 125A 3Ph supply (main switch not included)
- Pre-wired and ready to fit meter.
- Ample DIN space.
- Authority section integrated with lock-off devices for meter isolation and service protection.
- Manufactured from 1.0mm galvanised steel to Z275.
- Powdercoated Light Grey RAL7035.

Comes standard with:

- Tenancy sub-main MCBs
- Authority section integrated with lock-off devices for meter isolation and service protection.



GMUS06

### ORDERING GUIDE

Part Number	Type of Enclosure <sup>^</sup>	Dimensions (mm)			Meters		Meter Isolator	Sub-Main Breaker
		Height	Width	Depth	Max. number	Type of meter		
GMPS06	JB/P	900	600	343	6 x 1-Phase	Flat rate	63A	63A
GMUS06	JB/P	900	600	343		Unwired	–	–

<sup>^</sup> For more information on standard group metering enclosures please refer to pages 48.

▲ Available on request.

### PLINTHS

Part Number	Height	Width	Depth	GMPS06	GMUS06
JB/PLINTH	500	600	300	•	•

# General Group Metering

Enclosures to suit multiple tenancy sites



- Designed for multiple tenancy sites in residential and commercial metering applications.
- For use in all states except Victoria, Tasmania and Western Australia.
- Ample DIN space.
- Padlockable handle available as an accessory.
- Lift-off door for easy installation.
- Sales in NSW Supply Authority regions require GMEPLK locking handle.
- Manufactured from 1.0mm galvanised steel to Z275.
- Powdercoated Light Grey RAL7035.

- Comes standard with:
- Key lockable door handle
  - Black panel



KB/P

## ORDERING GUIDE

Part Number	Description	DIN space	Dimensions (mm)			Panel (mm)			No. of panels	Doors
			Height	Width	Depth	Height	Width	Depth Behind		
JB/P	Painted With DIN	24-pole	900	600	343	560	550	150	1	
KB/P		30-pole	900	800	343	560	750	150	1	
LB/P		30-pole	1200	800	420	863	750	220	1	
MB/P		36-pole	1200	1000	435	863	950	230	1	Double doors
NB/P▲*		30-pole	900	1600	435	560 822	750 750	230	2	Double doors
OB/P▲*		30-pole	1200	1600	435	1124 863	750 750	230	2	Double doors
JB/PU	Unpainted With DIN	24-pole	900	600	343	560	550	150	1	
KB/PU		30-pole	900	800	343	560	750	150	1	
LB/PU		30-pole	1200	800	435	863	750	220	1	
MB/PU		36-pole	1200	1000	435	863	950	230	1	Double doors
NB/PU▲*		30-pole	900	1600	435	560 822	750 750	230	2	Double doors
OB/PU▲*		30-pole	1200	1600	435	1124 863	750 750	230	2	Double doors
JB	Painted No DIN	No Din	900	600	343	825	550	150	1	
KB▲		No Din	900	800	343	825	750	150	1	
JB/U	Unpainted No DIN	No Din	900	600	343	825	550	150	1	
KB/U		No Din	900	800	343	825	750	150	1	
LB/U		No Din	1200	800	420	1124	750	220	1	
MB/U		No Din	1200	1000	420	1124	950	230	1	Double doors

\* Two panels supplied with product  
▲ Available on request.

## ACCESSORIES

Part Number	Product	JB/P	KB/P	LB/P	NB/P	JB/PU	KB/PU	LB/PU	NB/PU	OB/PU	JB	KB	JB/U	KB/U	LB/U	MB/U
GMEPLK	Padlockable handle	•	•	•	•	•	•	•	•	•	•	•	•	•	•	•
JB/PLINTH	Plinths 500mm height	•				•					•		•			
KB/PLINTH				•				•							•	

# Panelboard Econo

Modular Universal Distribution Board System



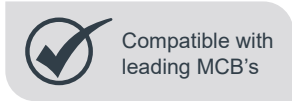
- Designed and made in Australia
- IP33 protection rating
- Compatible with leading MCB's
- Includes integrated KATKO 250A Main Switch
- Field reversible door with stainless steel hinges
- 3 chassis sizes available - 24P, 36P, 48P
- AS/NZS 61439 compliant
- Manufactured from 1.0mm Galvabond® - RAL7035

Comes standard with:

- Schedule holder with distribution schedule card
- Switchboard keyed flush mounted lock (keyed 92268)
- 12 poles of additional DIN (6 pole each side of main switch)
- KATKO 250A Main Switch
- 4 x PF6TR (24 poles of pole fillers)
- Supplied with 3 interchangeable MCB mounting brackets to accommodate leading brands



PBE48P



Each board comes standard with 3 interchangeable MCB mounting brackets, designed to fit leading circuit breaker brands:

Bracket 1:

- Schneider Acti 9 Long Body RCBO's A9D61\*\*\*, A9D11\*\*\*, A9DC1 & A9DC6
- Schneider Acti 9 breaker up to 63A

Bracket 2:

- NHP DIN T long body RCBO's DIN-SAFE DSRCBH, DIN SAFE DSRCBT
- NHP DIN T circuit breakers up to 63A excluding DIN-T 2-in-1

Bracket 3:

- Hager Long body RCBO's ACC2\*\*\*, ACA2\*\*\*, ADD2\*\*\*
- Hager circuit breakers up to 63A, NT, NDN
- Hager Add on Blocks BD, BE & BF

## ORDERING GUIDE

Part Number	MCB Poles		External Dimensions (mm)		
	Chassis	Beside Switch	Height	Width	Depth
PBE24P	24	6+6	650	550	170
PBE36P	36	6+6	750	550	170
PBE48P	48	6+6	850	550	170

## Pole Fillers

Designed to fit most DIN cutouts, our patented technology ensures secure installation, requiring a tool for removal. Compliant to Australian Wiring Rules.

Part Number	Modules
PF6TR	6 module width
PF6TR/PK	Pack of 3 PF6TR



NOTE: Compatible MCBs and RCBOs were accurate at the time of printing. However, third-party product changes may occur without notice. It is the responsibility of the installer to verify the compatibility of all components prior to final installation. B&R Enclosures accepts no liability for unverified selections.

# Panelboard Superior

Modular Universal Distribution Board System



- Designed and made in Australia
- IP66 protection rating
- Compatible with leading MCB's
- Designed for NSX250 (toggle or rotary handle) or P250E MCCB's, either auto or non-auto Main Switch
- Field reversible door and escutcheon
- 3mm aluminium gland plates top and bottom
- Three-point swing-handle half-euro cylinder lock (keyed 92268)
- Multi-function extension box for up to 48P or mounting pan for adding power monitors and/or controls
- 5 chassis sizes available - 24P, 36P, 48P, 60P and 72P (250A max)
- AS/NZS 61439 compliant

Comes standard with:

- Aluminium gland plates top and bottom
- Hinged escutcheon
- Schedule holder and distribution schedule
- Swing handle three point locking
- Escutcheon earth strap kit
- 6 Pole DIN section either side of Main Switch (12 poles total)
- 24 Pole DIN section below chassis



Compatible with leading MCB's

## ORDERING GUIDE

Part Number	MCB Poles			External Dimensions (mm)			Usable Gland Plate Area (mm)	
	Chassis	Bottom	Beside MCCB	Height	Width	Depth	Width	Depth
PBS24P	24	24	6+6	1000	600	250	550	150
PBS36P	36	24	6+6	1100	600	250		
PBS48P	48	24	6+6	1200	600	250		
PBS60P	60	24	6+6	1400	600	250		
PBS72P	72	24	6+6	1400	600	250		
PBSEXT		48		400	600	250		
PBS24P/RO *	24	24	6+6	1000	600	250		
PBS36P/RO *	36	24	6+6	1100	600	250		
PBS48P/RO*	48	24	6+6	1200	600	250		
PBS60P/RO *	60	24	6+6	1400	600	250		
PBS72P/RO *	72	24	6+6	1400	600	250		
PBSEXT/RO *		48		400	600	250		
PBS24P/S *	24	24	6+6	1000	600	250		
PBS36P/S *	36	24	6+6	1100	600	250		
PBS48P/S *	48	24	6+6	1200	600	250		
PBS60P/S *	60	24	6+6	1400	600	250		
PBS72P/S *	72	24	6+6	1400	600	250		
PBSEXT/S *		48		400	600	250		

PBS-GPK

Includes ONE glandplate, the associated screws and grommets for IP66 sealing  
 Extension box (PBSEXT and PBSEXT/S) requires 2 kits to be used as standalone enclosure

\* on request

## EXTENSION BOX

- Provided standard with 48 poles of DIN, can be re-configured to 24 poles if more cabling space is required.
- Comes with mounting pan for fitment of control gear and/or current transformers (CT's) for power monitoring.
- Swing-handle half-euro cylinder lock (keyed 92268).
- Document holder fitted to inside of door.
- Includes all the gaskets, nuts and bolts for direct fitment to the top or bottom of any Superior range panelboard.



*PBSEXT can be fitted to top or bottom*



Please note **TWO** gland plate kits (PBS-GPK) are required for extension boxes used as a standalone enclosure. Speak to your local B&R Sales Representative to order.

## Pole Fillers

Designed to fit most DIN cutouts with a patented technology that makes them stay in requiring a tool for removal. Compliant to Australian Wiring Rules.

Part Number	Modules
PF6TR	6 module width
PF6TR/PK	Pack of 3 PF6TR

# Infinity 3G

Modular & pre-configured switchboards



**B&R's Infinity 3G range is a smart, national approach to metering providing a modular or pre-configured solution for power distribution and metering applications up to 630Amps.**

## FEATURES

- Complies with all Australian Switchboard Standards.
- Meets and exceeds all National Authority Regulations for power distribution and metering applications up to 630Amps.
- Simple design to reduce errors and call backs.
- Easily assembled saving time and labour.
- Tested to IEC 61439 and AS/NZS 3439 and compliant with AS/NZS 61439 — the Australian standard for switchboards.
- Enclosures to suit all environmental conditions and are available in IP66, IP34 and IP2x.
- Metric Matrix modular grid system makes switchboard design quick and compact.
- One fixing screw fits all modules reducing assembly time.
- Hinged escutcheons improve safety during maintenance.
- Escutcheons and panels are interchangeable and allow for either left or right hinging.
- Special door hinging allows door to be left or right hinged.
- Loose supply, pre-assembled or pre-wired options to suit your time and budget.
- Manufactured from zinc coated steel, 316 stainless steel and aluminium.



For more information on the Infinity 3G range please refer to separate catalogue or visit [brenclosures.com.au/infinity-3G/](http://brenclosures.com.au/infinity-3G/)

# Infinity 3G

Modular & pre-configured switchboards

The infographic is a large, light-grey rounded rectangle divided into four quadrants. In the center is a dark square logo with 'B.R.' in large white letters, 'PROUDLY AUSTRALIAN' in smaller white letters below it, and a small white map of Australia to the right. The top-left quadrant is titled 'COMPLIANCE' and contains the text 'Do you require a solution that complies with all National Supply Authority Regulations?' and an icon of a checkmark in a document labeled 'AS/NZS 61439'. The top-right quadrant is titled 'DESIGN' and contains the text 'Specialist engineers work closely with customers to deliver custom solutions or standard off the shelf alternatives.' and an icon of a pencil. The bottom-left quadrant is titled 'MODULAR' and contains the text 'A simple design that can be easily assembled— one screw fits all modules.' and an icon of a 3x3 grid. The bottom-right quadrant is titled 'DELIVERY' and contains the text '7 LOCAL SALES OFFICES', '9 WAREHOUSES', and '350 STAFF' next to an icon of a forklift.

## COMPLIANCE

Do you require a solution that complies with all National Supply Authority Regulations?

AS/NZS 61439

## DESIGN

Specialist engineers work closely with customers to deliver custom solutions or standard off the shelf alternatives.

## MODULAR

A simple design that can be easily assembled— one screw fits all modules.

## DELIVERY

7 LOCAL SALES OFFICES  
9 WAREHOUSES  
350 STAFF

**B.R.**  
PROUDLY AUSTRALIAN





Part Number	Page
1DIN24R	31
1FPS	32
2F	20, 38
3F	20, 38
3NQF	38
3UF/59	38
4F	20
BMP/W	47
BMP0303/06	47
BMP0402/06	34, 47
BMP240355/06	47
BMP255355/06	47
BMP289300/06	47
BMP300680/06	47
BMP355560/06	47
BMP360595/06	47
BMP365350/06	47
BMP450110/06	47
BMP450450/06	34, 47
BMP500300/06	47
BMP575560/06	47
BMP600600/06	47
BMP610610/06	47
BPS133	47
BPS253	47
BPS323	47
BR1M/ECB	19
BR3M	19
BR3M/ECB	19
BS06	47
BS06/CTS	47
BS08	47

Part Number	Page
BS08/CTS	47
CCP050/24	46
CCP050/HD	46
CCP050/HD/15	46
CCP050/HD/28	46
CCP075/HD	46
CCP075/HD/15	46
CCP075/HD/28	46
CCP100/HD	46
CCS020/HD	46
CCS025/HD	46
CCS032/HD	46
CCS038/HD	46
CCS050/HD	46
CCS075/HD	46
CCS075/HD/15	46
CL	30, 31
CLV001	24, 35
CTB/E2	40
CTC200/400A	40
CTC630A	40
CTPFK	40
D10	37
D20	37
EB	33, 38
GM04P	49
GM05P	49
GM07P	49
GMEPLK	51
GMPV04	49
GMPV05	49
GMPV07	49
HZN/COM1	11
HZN/FK8	17, 21, 24, 30, 35, 36, 37
HZN/PLINTH	17, 21, 24, 30, 35, 36, 37
HZN/ROOF	17, 21, 24, 30, 35, 36, 37
JB	51
JB/P	51
JB/PLINTH	50, 51

Part Number	Page
JB/PU	51
JB/U	51
KB	51
KB/P	51
KB/PLINTH	51
KB/PU	51
KB/U	51
LB/P	51
LB/PU	51
LB/U	51
LCM07C	43
LCM09D	43
LCM09F	43
LCM09S	43
LCM10C	43
LCM12D	43
LCM12F	43
LCM12S	43
LCM144S	43
LCM16C	43
LCM18D	43
LCM18F	43
LCM18S	43
LCM24D	43
LCM24F	43
LCM24S	43
LCM36D	43
LCM36F	43
LCM36S	43
LCM48D	43
LCM48F	43
LCM48S	43
LCM96S	43
LCMLK	43
LCP01	42
LCP02	42
LCP04	42
LCP12/B	42
LK100A14TC16	44

# Product Index

Part Number	Page
LK10B	44
LK10B35	44
LK10C	44
LK10C35	44
LK10R	44
LK10R35	44
LK13B35	44
LK13C35	44
LK13R35	44
LK165A12	45
LK165A13B70	44
LK165A13C70	44
LK165A13R70	44
LK165A18	45
LK165A24	45
LK165A36	45
LK165A7B70	44
LK165A7C70	44
LK165A7R70	44
LK18B	44
LK18C	44
LK18R	44
LK250A12	45
LK250A18	45
LK250A24	45
LK250A36	45
LK250A4B35	44
LK400A13B150	44
LK400A13C150	44
LK400A13R150	44
LK400A7B150	44
LK400A7C150	44
LK400A7R150	44
LK5B	44
LK5B35	44
LK5C	44
LK5C35	44
LK5R	44

Part Number	Page
LK6B35	44
LK6C35	44
LK6R35	44
LK7B	44
LK7B35	44
LK7C	44
LK7C35	44
LK7R	44
LK7R35	44
LK90A12	45
LK90A4	45
LK90A6	45
LK90A8	45
LKDCT10016	40
LKDVA10000	40
LKDVA10001	40
LKDVA10002	40
LKDVF10000	40
LKDVF10002	40
LKFEET	45
LKT4B35	44
LKT4C35	44
LKT4R35	44
MB/P	51
MB/PU	51
MB/U	51
MD0102F	25
MD0201F	25
MD0201Y	25
MD0301P	25
MD0403F	25
MD0403Y	25
MD042104	25
MD042106	25
MD043601	25
MD0605	25
MD0605/CT	26
MD062402	23
MD064201	25

Part Number	Page
MF011Y	25, 26
MF012B	25, 26
MF061Y	26
MF062B	26
MG003P	25, 26
MG004P	25, 26
MG019P	26
MG020P	26
MG022P	26
MG024P	26
N01V	27
N02V	27
N03/3V	27
N06/3V	27
N06V	27
N08	27
N09	23, 27, 38
N10	23, 27, 38
N11	27
N12	27
N13	27
N14	27
N15	27
N16	27
N20	21
N20/S	21
N22	21
NB/P	51
NB/PU	51
NBN-HDC01	12
NBN-HDC02	12
NBN-HDC10	12
NBN-HDC13	12
NBN-HDC15	12
NBN-HDC17	12
NBN-HDC20	12
NBN-HDC23	12
NBN-HDC25	12
NBN-HDC27	12

Part Number	Page
NBN-HDCFK1	12
NBN-HDCFK2	12
NQ/DIN	19
NSW/BD/GD10	22
NSW/BP/GD10	22
NSW/HBD	22
NSW/HBP	22
NSW/U/13	22
OB/P	51
OB/PU	51
PBE24P	52
PBE36P	52
PBE48P	52
PBS24P	53
PBS36P	53
PBS48P	53
PBS60P	53
PBS72P	53
PBSEXT	53
PF6TR	46, 52, 54
PF6TR/PK	46
PM3627	20
PM3627/S	20
PM5436	20
PM5436/S	20
Q12	16
Q20	16
Q20/1PCW	18
Q20/3PCW	18
Q20/S	16
Q60	16
QBP	17
QNPLK	19
QSPK360	20
RB/AP3	33
RB01/3	33
RBSK	20, 33
RBSKV	27


Part Number	Page
S10	29
S10/S	29
S20	29
S20/3TKIT	30
S82	29
SF1208	39
SF1208/NB	39
SF1212	39
SF1212/NB	39
SF1414	39
SF1414/NB	39
SF1614	39
SF1614/NB	39
SF1812	39
SF1812/NB	39
SF1818	39
SF1818/NB	39
SF2418	39
SF2418/NB	39
SF2424	39
SF2424/6	39
SF2424/NB	39
SF2424/NB/6	39
SFPLK1NL	27
SFPLK3NL	27
GMPS06	50
GMUS06	50
SMB1/15	40
SMB1/15/S	40
T20B	35
T20B/S	35
T22	35
T9/PKIT	35
T25P	36

Part Number	Page
TB1208/U	41
TB1212/U	41
TB1414/U	41
TB1614/U	41
TB1812/U	41
TB1818/U	41
TB1818/U/13	41
TB2418/U	41
TB2424/U	41
TB2424/U/13	41
TBSC02	43
U/GBP	24, 25
U/GBP5	24
V10	24
V10/S	24
V11	24
V11/2	24
V12	24
V5	24
W10	34
W10/S	34




**BUILT TO PROTECT**  
**ENGINEERED TO PERFORM**


---

 1300 ENCLOSURES  
1300 362 567

---

 [sales@brenclosures.com.au](mailto:sales@brenclosures.com.au)

---

 [brenclosures.com.au](http://brenclosures.com.au)

