



Special Purpose



Connector TE – Zinc Coated Steel Termination Enclosures

Index

[Dimension Sheet](#)

[Catalogue Information](#)

[Leaflet](#)

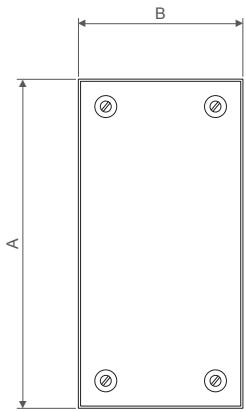
Web Links

[Connector TE Information Page](#)

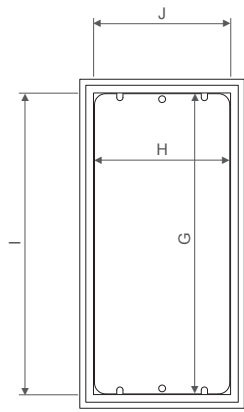
[Ask a question / Send us an enquiry](#)

[Information about B&R](#)

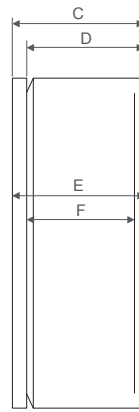
[Local Sales Team Phone Numbers](#)



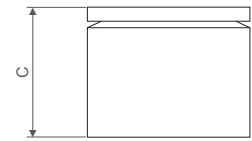
Front View



Front View With Internals



Side View



Bottom View

Dimensions (mm)

Catalogue No.		External		Internal Depth		Mounting Pan		Opening Size		No of Fixings		
Zinc Coated Steel	Stainless Steel	A	B	C	D	E	F	G*	H*		I	J
TE1108	TE1108/S	150	150	80	61	77	48	122	120	125	125	4
TE3112	TE3112/S	300	150	120	101	117	88	272	120	275	125	4
TE2212	TE2212/S	200	200	120	101	117	88	172	170	175	175	4
TE3212	TE3212/S	300	200	120	101	117	88	272	170	275	175	4
TE4212	TE4212/S	400	200	120	101	117	88	372	170	375	175	6
TE6212	TE6212/S	600	200	120	101	117	88	572	170	575	175	6

*Mounting pan is optional extra



Connector TE – Zinc Coated Steel Termination Enclosures – IP66

brenclosures.com.au/fezs.htm



Features

- Captive 316 stainless steel combo head screws, used to prevent loss when fastening
- Provision for mounting DIN rails or a mounting pan, increasing application flexibility
- Approvals
 - CE marked
 - Lloyds
- Materials
 - Body – zinc coated steel
 - Body thickness – 1.2mm
 - Gasket – FIP polyurethane
- Surface finish – powdercoated
- Protection rating – IP66



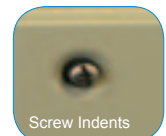
The Connector TE is a range of enclosures suitable for many applications where smaller enclosures are required. It includes provision for the installation of either a mounting pan or DIN rails, both of which are available as an option. Typical applications include housing terminations, pushbuttons or switchgear in industrial or demanding environments.

Inclusions

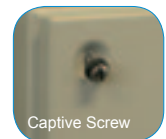
- Earth strap kit

Selection Guide

Catalogue No.	Dimensions (mm)			Usable Depth (mm)		Weight (kg)
	Height	Width	Depth	with DIN Rail	with Mounting Pan	
TE1108	150	150	80	47	60	1.2
TE3112	300	150	120	87	100	2.4
TE2212	200	200	120	87	100	2.2
TE3212	300	200	120	87	100	2.9
TE4212	400	200	120	87	100	3.6
TE6212	600	200	120	87	100	4.9



Screw Indents



Captive Screw



Mounting Pan

Accessories

Product	Description	Catalogue No.
Mounting pan – 2mm metal (white)	122 x 120mm	TEMP11
	172 x 170mm	TEMP22
	272 x 120mm	TEMP31
	272 x 170mm	TEMP32
	372 x 170mm	TEMP42
DIN rail – aluminium	572 x 170mm	TEMP62
	140 x 35mm	TED1
	190 x 35mm	TED2
	290 x 35mm	TED3
	390 x 35mm	TED4
Wall mounting brackets	590 x 35mm	TED6
	316 stainless steel (4)	MEB/S

Introduction

General Purpose

Special Purpose

Multiple Applications

Hazardous Areas

Data & Communications

Ancillary Items

Technical Drawings

Technical Information



Special Purpose Accessories

Locks, Touch Up Paint & General Accessories

Standard Locks on Special Purpose Enclosures

Enclosure	 Steel	 Stainless steel
Universal DD <1600	DD020 – chromed steel with 7mm square steel insert	DD020/PS – Black powdercoated lock with 7mm square stainless steel insert
Universal DD 1600+	DD050 – lockable L handle keyed to 92268	DD050 – lockable L handle keyed to 92268
Incline SR		
Miner ME	NI020 – chromed steel with 7mm square steel insert	NI020/PS – Black powdercoated lock with 7mm square stainless steel insert
Universal PB		
Headland PH	–	NI020/S – Stainless steel lock with 7mm square stainless steel insert
Bowen BW	–	NI028S/S – Stainless steel lock with 8mm square slotted stainless steel insert
Pilbara SP	SP/LCK – chromed steel padlockable swing handle with LockSock	SP/LCK/S – Stainless steel padlockable swing handle with LockSock
Lambert LB		

Lock Options for Special Purpose Enclosures

Product	Description	Catalogue No	Standard Lock/Insert	Alternative insert	Keys		
					Lockable handles	Plastic, 3-way	Aluminium, 3-way
Turnbuckle	chromed steel	NI020	7mm square – steel	See page 87		SKU	SKZ
		DD020	7mm square – steel	See page 87		SKU	SKZ
	powdercoated	NI020/PS	7mm square – stainless steel	See page 87		SKU	SKZ
		DD020/PS	7mm square – stainless steel	See page 87		SKU	SKZ
	stainless steel	NI020/S	7mm square – stainless steel	See page 87		SKU	SKZ
		NI028/S	8mm square slotted – stainless steel	See page 87			
Wing knob	lockable	NI030	Key code 92268		SK3		
		DD030	Key code 92268		SK3		
	non-lockable	NI111					
		DD111					
T handle	lockable	NI040	Key code 92268		SK3		
		DD040	Key code 92268		SK3		
L handle	lockable	NI050	Key code 92268		SK3		
		DD050	Key code 92268		SK3		
	padlockable – steel	NI052					
		DD052					
		padlockable – stainless steel	NI052/S				
			DD052/S				
Swing Handle	padlockable – steel	SP/LCK					
	padlockable – stainless steel	SP/LCK/S					
LockSock®	plastic	SP/LCK/DC	to suit SP/LCK				
Dust Cap	plastic	NI020/DC	to suit NI020				

Lock Inserts for Locks

To suit lock style	Description	To suit lock	Standard Insert	3mm double bit pin		8mm square		8mm square slotted	8mm triangle	
				Steel	Stainless Steel	Steel	Stainless Steel	Stainless Steel	Steel	Stainless Steel
Turnbuckle	chromed steel	NI020 or DD020	7mm square – steel	LKINS3P		LKINS8S		LKINS8SS/S	LKINS8T	LKINS8T/S
	powdercoated with SS insert	NI020/PS or DD020/PS	7mm square – stainless steel		LKINS3P/S		LKINS8S/S	LKINS8SS/S	LKINS8T	LKINS8T/S
	stainless steel	NI020/S or DD020/PS	7mm square – stainless steel		LKINS3P/S		LKINS8S/S	LKINS8SS/S	LKINS8T	LKINS8T/S
Key required – aluminium			SKZ	SKZ	SKZ	SK8	SK8	SK8	SKZ	SKZ
Key required – plastic			SKU	SKU	SKU				SKU	SKU



Touch Up Paint

Product	Description	Catalogue No.
Pebble Grey – RAL7032	300g	TUP/P20
Light Grey – RAL7035	150g	TUP/P29
French Blue – B21	150g	TUP/P21
B&R Grey – RAL9002	300g	TUP/P22
Mist Blue – B33	150g	TUP/P23
Orange – X15	150g	TUP/P24
Matt Black	150g	TUP/P25
Oyster – N41	150g	TUP/P26
Light Grey – RAL7035	150g	TUP/P29
Aqua Glass – B25	150g	TUP/P30
Storm Grey – N42	150g	TUP/P31

General Accessories

Product	Catalogue No.	To suit enclosures
Earth strap kit	ECESK	All

Termination Enclosures – Zinc Coated Steel



Captive 316 stainless steel
combo head screws

Provision for DIN
rail or mounting pan



Flat face gutter

IP66

OVERVIEW

The Connector TE is a range of enclosures suitable for many applications where a smaller, robust enclosure is required.

It has a flexible system for mounting electrical equipment which can be done via a mounting pan or DIN rail, both have been ergonomically designed for easy installation. The renowned flat face gutter ensures a reliable and long-lasting seal no matter what the application.

MATERIALS

Body: Zinc coated steel
Body thickness: 1.2mm
Gasket: FIP polyurethane
Surface finish: Powdercoated RAL7032

APPLICATION

Typical applications include housing terminations, pushbuttons or switchgear in harsh environments where a robust enclosure is required.

FEATURES

- IP66 protection rating
- Fully welded construction
- Captive 316 stainless steel combo head screws, used to prevent loss when fastening
- Provision for mounting DIN rails or a mounting pan, increasing the application flexibility
- Flat face gutter
- Easy installation
- Foamed in place polyurethane gasket

Catalogue No.	Dimensions (mm)			Usable Depth (mm)		Weight (kg)
	Height	Width	Depth	with DIN Rail	with Mounting Pan	
TE1108	150	150	80	47	60	1.2
TE3112	300	150	120	87	100	2.4
TE2212	200	200	120	87	100	2.2
TE3212	300	200	120	87	100	2.9
TE4212	400	200	120	87	100	3.6
TE6212	600	200	120	87	100	4.9

Accessories

Product	Description	Catalogue No.
Mounting pan – 2mm metal (white)	122 x 120mm	TEMP11
	172 x 170mm	TEMP22
	272 x 120mm	TEMP31
	272 x 170mm	TEMP32
	372 x 170mm	TEMP42
	572 x 170mm	TEMP62
DIN Rail – aluminium	140 x 35mm	TED1
	190 x 35mm	TED2
	290 x 35mm	TED3
	390 x 25mm	TED4
	590 x 35mm	TED6
Wall mounting brackets	316 stainless steel (4)	MEB/S

INCLUSIONS

- Earth strap kit



Other brands in the B&R Group:



Queensland P: +61 7 3714 1000
Townsville P: +61 7 4775 6255
Sydney P: +61 2 8867 7688
Newcastle P: +61 2 4961 4433
Victoria P: +61 3 8588 8400

South Australia P: +61 8 8417 6200
Western Australia P: +61 8 9248 9744
Tasmania P: +61 3 6331 5545
Northern Territory P: +61 8 8947 0870

Email sales@brenclosures.com.au
 Web www.brenclosures.com.au