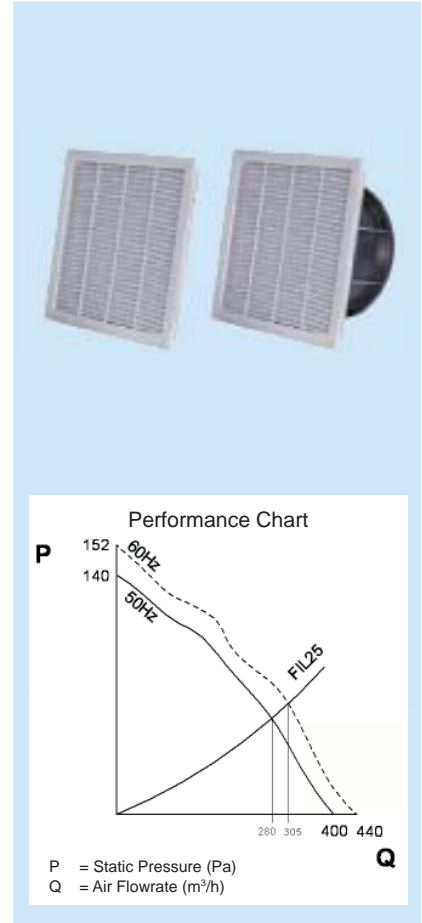




FAN 28

Ventilating Units with Filter – 400 m³/h

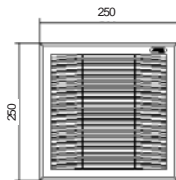
Characteristics	M.U.	TX-FIL25XN0B	TX-FAN28BN0B	TX-FAN28CN0B	TX-FAN28LN0B
Air flow rate	m ³ /h	-	400/440	400/440	400/440
Power supply	V ~ Hz	-	230 1~ 50-60	115 1~ 50-60	400 2~ 50-60
Height	mm	250	250	250	250
Width	mm	250	250	250	250
Depth	mm	26	98	98	98
Absorbed electrical power	W	-	67/90	50/64	72/95
Max. Current	A	-	0.3/0.36	0.54/0.65	0.18/0.24
Over current protection	-	-	Inside motor	Inside motor	Inside motor
Electrical connection	-	-	Faston	Faston	Faston
Duty cycle	-	-	100%	100%	100%
Temperature limits	°C	-30 +75	-10 +50	-10 +50	-10 +50
Protection level EN60529	-	IP54	IP54	IP54	IP54
Noise level	dB (A)	-	61/63	61/63	61/63
FAN + FIL capacity	m ³ /h	-	1x FIL25XN0B: 280/305 2x FIL25XN0B: 297/318 1x FIL35XN0B: 308/332		
Direction of air flow	-	Outside towards the inside - reversible			
Filter (Eurovent 4/9)	-	EU3	EU3	EU3	EU3
Motor support	-	-	Bearings	Bearings	Bearings
Conformity	-	CE	CE	CE	CE
Colour	-	RAL 7035			



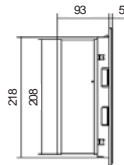
Accessories / Options

Pack of 10 cloth filters for FAN23-25	AAFFN25
Pack of 10 cloth filters for FAN23-25 high filtering capacity	AAFFH25
0-60°C thermostat, NO 10A	AAFTO12
5-60°C thermostat, change-over contact 10A	AAWTS10
Casing for IP55 protection	C12001229

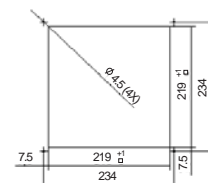
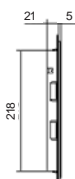
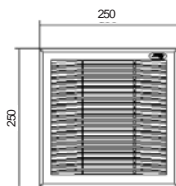
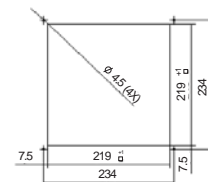
Front Elevation



Side Elevation



Drilling Template*



* Drilling template dimensions may change without notice, please refer to your sales representative for further details.

Queensland, Head Office Brisbane South Industrial Park 51 Stradbroke St., Heathwood, QLD 4110

PO Box 1151, Browns Plains BC, QLD 4118

Ph: (07) 3714 1000 Fax: (07) 3714 1081 ISD +61 7 3714 1000

Certified to AS/NZS ISO 9001 - AS/NZS 4801