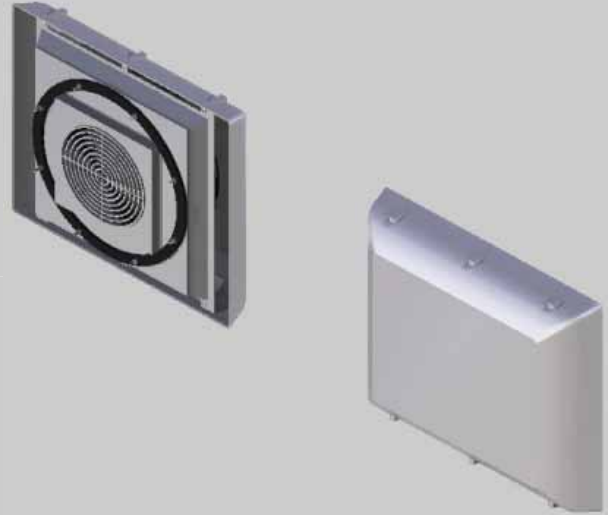


DLK22

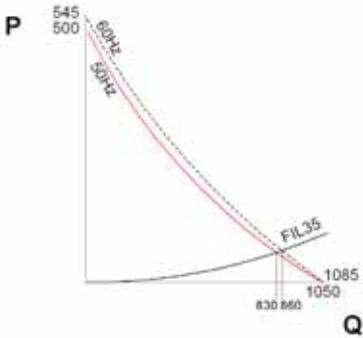
VENTILATING TOWERS

Characteristics	U.M.	TX-DLK22BX0A
Air flow rate	m ³ /h	1050/1085
Power supply	V ~ Hz	230 1~ 50-60
Dimensions HxWxD	mm	350x400x111
Absorbed electric power	W	120/155
Max. current	A	0,52/0,65
Over current protection	-	inside motor
Electrical connection	-	terminals
Duty cycle	-	100%
Temperature limits	°C	-10 +70
Protection level EN60529	-	IP44
Noise level	dB (A)	56
DLK + FIL35XN0A capacity	m ³ /h	1x FIL35XN0A: 830/860 2x FIL35XN0A: 900/915
Direction of the air flow	-	inside towards outside
Motor support	-	bearings
Colour	-	RAL 7032 ORANGE PEEL EFFECT
Conformity	-	CE

Accessories/Options	
Filter unit 325x325 mm	TX-FIL35XN0A
Pack of 10 cloth filters for FAN35	TX-AAFFN35
Pack of 10 cloth filters for FAN35 high filtering capacity	TX-AAFFH35
0-60°C thermostat, NO 10A	TX-AAFTO12
5-60°C thermostat, change-over contactor 10A	TX-AAWTS10

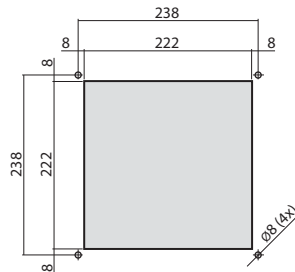
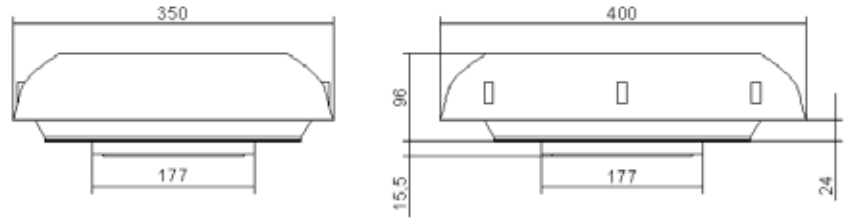


Performances



P = Static pressure (Pa)
Q = Air flow rate (m³/h)

Dimensions



Drilling template

* Dimensions may change without notice, please refer to your sales representative for further details.

Composition of the supply

- Ready-to-install ventilating tower
- Seal-adhesive seal for coupling to the enclosure
- Installation instructions with drilling template in 1:1 scale
- Securing screws