

# V SERIES

## safety, quality & exceptional performance

Australia's largest enclosure manufacturer, B&R Enclosures, is excited to release the HORIZON V11 Meterbox packed with great new features, you'll wonder how you ever lived without them.

This series provides consumers, electricians, builders and specifiers a meterbox designed for increased safety, quality and performance.

Here's what the series has to offer...

FEATURES:	V10	V11	V11/2	V12
SIZE	485W x 688H x 278D	485W x 430H x 278D	485W x 430H x 278D	485W x 855H x 278D
Din pole space	24 pole	none	none	48 pole
Rota-DIN® Rotatable & removable din rail	•			•
New easy cord retention	•	•	•	•
Ratchet locking of the cable entry	•	•	•	•
Door stay built into the hinges	•	•	•	•
New gravity catch – positive closing	•	•	•	•
New sealable ¼ turn panel retainer with handle	•	•	•	•
¼ turn escutcheon fixing	•			•
Plastic escutcheon	•			•
Top & bottom link numbering ID	•			•
Builders pole mountable	•			•
Service fuse & links	•		•	•

## V11

STANDARD, PANEL ONLY

## V11/2

WITH SERVICE FUSE & LINK

B&R INNOVATIONS FOR VICTORIA

Living up to the Standards

Meets requirements of AS/NZS3012 & VIC Service Rules Acceptance #SIR50709



hager **B&R**

### HEAD OFFICE

Hager B&R Pty Ltd  
Unit 14-17 Riverside Centre  
148 James Ruse Drive  
Parramatta, NSW 2150  
Ph (02) 9762 0200  
Fax (02) 9687 0011

### SALES OFFICES

Victoria (Melbourne)  
Hager B&R  
50-52 Sunmore Close  
Heatherton, VIC 3202  
Ph (03) 8588 8400  
Fax (03) 8588 8401



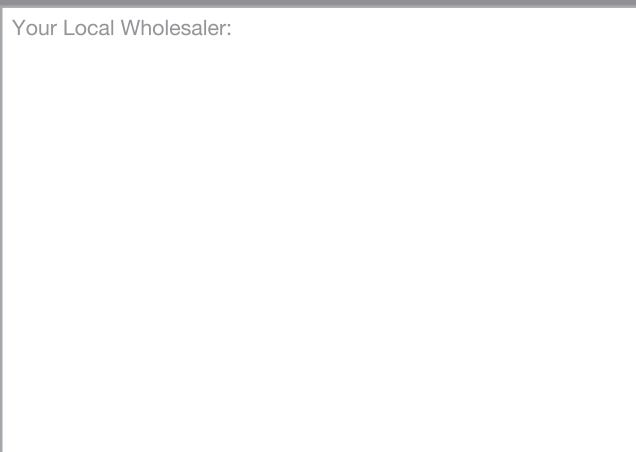
H O R I Z O N  
**V11**

# METERBOX

VICTORIAN DOMESTIC APPLICATIONS



Your Local Wholesaler:



© hager B&R Australia  
www.hagerbr.com.au

safety, quality & exceptional performance



# HORIZON V11

Features you can't live without!



**Cable Entry**<sup>®</sup>  
Ratchet slide removes need to screw fix.

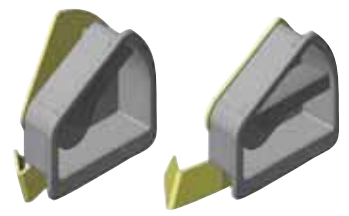
**Unique UV Label**  
Peel & fade resistant.

**New Gravity Catch**<sup>®</sup>  
Positive closing position.  
Handle remains flush with door.

**Door Hinge Design**  
'Door stay' built into new hinge system. Easy door removal.

'hold open' position

**Safety Cord Retainer**<sup>PP</sup>



## Stronger. Safer. Smarter.

### Why HORIZON is the safest choice!

**Bevelled door and double folded edges** resist twisting and make for safer handling. Edges are 'soft' and therefore will not cut cables or people.

**Panel retainer** is now captive (stays with the panel) preventing nuts from falling off and being lost.

### V10 & V12 extra features...

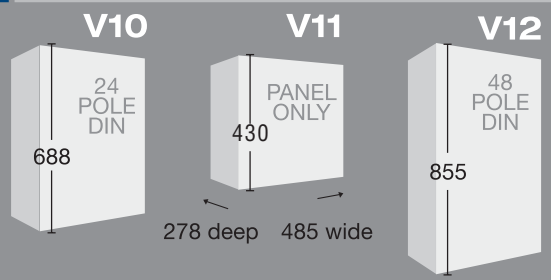
**Rota-DIN<sup>®</sup> Rotatable DIN rail**<sup>PP</sup> allows much greater visibility to terminal connection points of the switchgear allowing safer termination of cables and better inspection capabilities.

**Insulated Escutcheons**<sup>®</sup> New moulded plastic escutcheon with captive 1/4 turn screws preventing any possibility of accidental shorting or shock.

**Covered labelling section** prevents labels peeling and falling off.

**N/E links** are individually and uniquely numbered with increased visibility of numbers above and below link.

### NEW HEIGHTS FOR HORIZON! (mm)



### NEW STANDARD SAFETY FEATURE!

**Cord Retainer**<sup>PP</sup> for easy retention of extension cords to AS/NZS3012 without using ties.

<sup>PP</sup> Patent Pending <sup>®</sup> Registered Design