

Q SERIES

safety, quality & exceptional performance

Australia's largest enclosure manufacturer, B&R Enclosures, is excited to release the HORIZON Q Series meterbox for the Queensland Energex and Ergon markets.

This series provides consumers, electricians, builders and specifiers a meterbox designed for increased safety, quality and performance.



FEATURES:	Q10	Q11	Q12
SIZE	485W x 688H x 278D	485W x 516H x 278D	485W x 855H x 278D
Din pole space	24 pole	none	48 pole
Rotatable & removable din rail	•		•
New easy cord retention	•		•
Ratchet locking of the cable entry boss	•	•	•
Door stay built into the hinges	•	•	•
New gravity catch – positive closing	•	•	•
New sealable ¼ turn panel retainer with handle	•	•	•
¼ turn escutcheon fixing	•		•
Rear mounting straps	•	•	•
Plastic escutcheon	•		•
Top & bottom link numbering ID	•		•
Ready for mounting on new Builder's Pole	•	•	•

B&R INNOVATIONS FOR QUEENSLAND

Builder's Pole Stands Out! New & Secure

The new B&R builder's pole allows any trades person to move the enclosure from a temporary position to its permanent position without having to open the live switchboard.



hager **B&R**

HEAD OFFICE

Hager B&R Pty Ltd
Unit 14-17 Riverside Centre
148 James Ruse Drive
Parramatta, NSW 2150
Ph (02) 9762 0200
Fax (02) 9687 0011

SALES OFFICES

Queensland (Brisbane)
Brisbane South Industrial Park
51 Stradbroke Street
Heathwood, QLD 4110
Ph (07) 3714 1000
Fax (07) 3714 1091

Queensland (Townsville)
25 Dalrymple Road
Garbutt, QLD 4814
Ph (07) 4775 6255
Fax (07) 4779 6736



HORIZON Q12

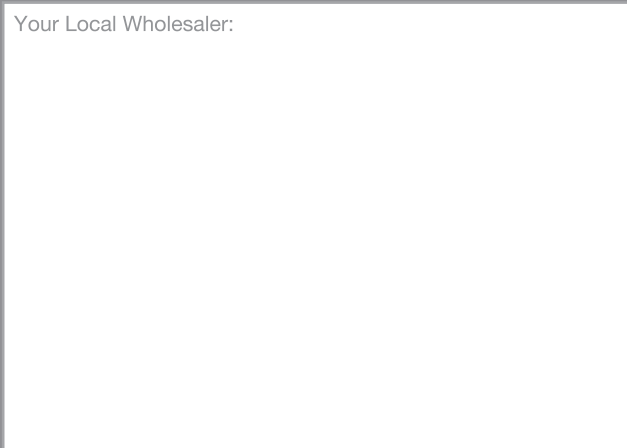
METERBOX

QUEENSLAND DOMESTIC APPLICATIONS



NEW SAFETY & TIME SAVING FEATURES

Your Local Wholesaler:

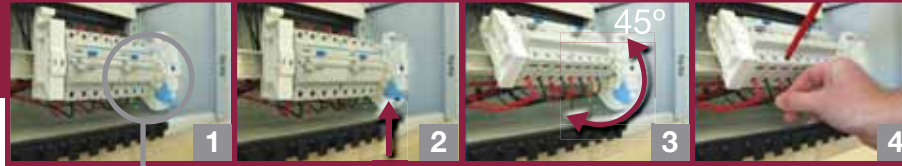


© hager B&R Australia
www.hagerbr.com.au

Made in Queensland for Queenslanders



HORIZON Q12



Rotatable DIN ^{PP}
Removable & rotatable DIN rail for easy access to components.

Cable Entry ^R
Ratchet slide removes need to screw fix.

Unique UV Label
Peel & fade resistant.

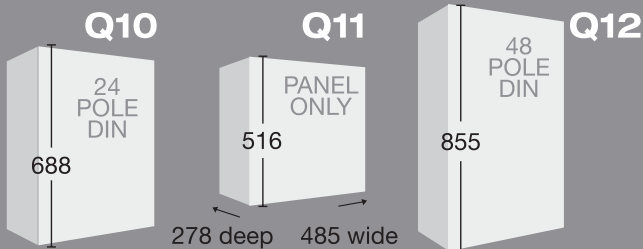
New Gravity Catch ^R
Positive closing position. Handle remains flush with door.

Door Hinge Design
'Door stay' built into new hinge system. Easy door removal.

Safety Cord Retainer ^{PP}
'hold open' position

**48
POLE
DIN**

NEW HEIGHTS FOR HORIZON! (mm)



Stronger. Safer. Smarter.

Why HORIZON is the safest choice!

Bevelled door and double folded edges resist twisting and make for safer handling. Edges are 'soft' and therefore will not cut cables or people.

Rotatable DIN rail ^{PP} allows much greater visibility to terminal connection points of the switchgear allowing safer termination of cables and better inspection capabilities.

Insulated Escutcheons ^R New moulded plastic escutcheon with captive 1/4 turn screws preventing any possibility of accidental shorting or shock.

Enclosure hanging brackets allow any trades person to mount the enclosure from a temporary pole to a permanent position without being exposed to live parts.

Panel retainer is now captive (stays with the panel) preventing nuts from falling off and being lost.

Covered labelling section prevents labels peeling and falling off.

N/E links are individually and uniquely numbered with increased visibility of numbers above and below link.

NEW SAFETY FEATURE!

Cord Retainer ^{PP} for easy retention of extension cords to AS/NZS3012 without using ties.

^{PP} Patent Pending ^R Registered Design